

The Believe-it-or-Not Rogaine

26th November, 1994 Lucas Heights, NSW

Organised by the NSW Rogaining Association

Map reprinted with permission of Land Information Centre,
Bathurst NSW. Crown Copyright

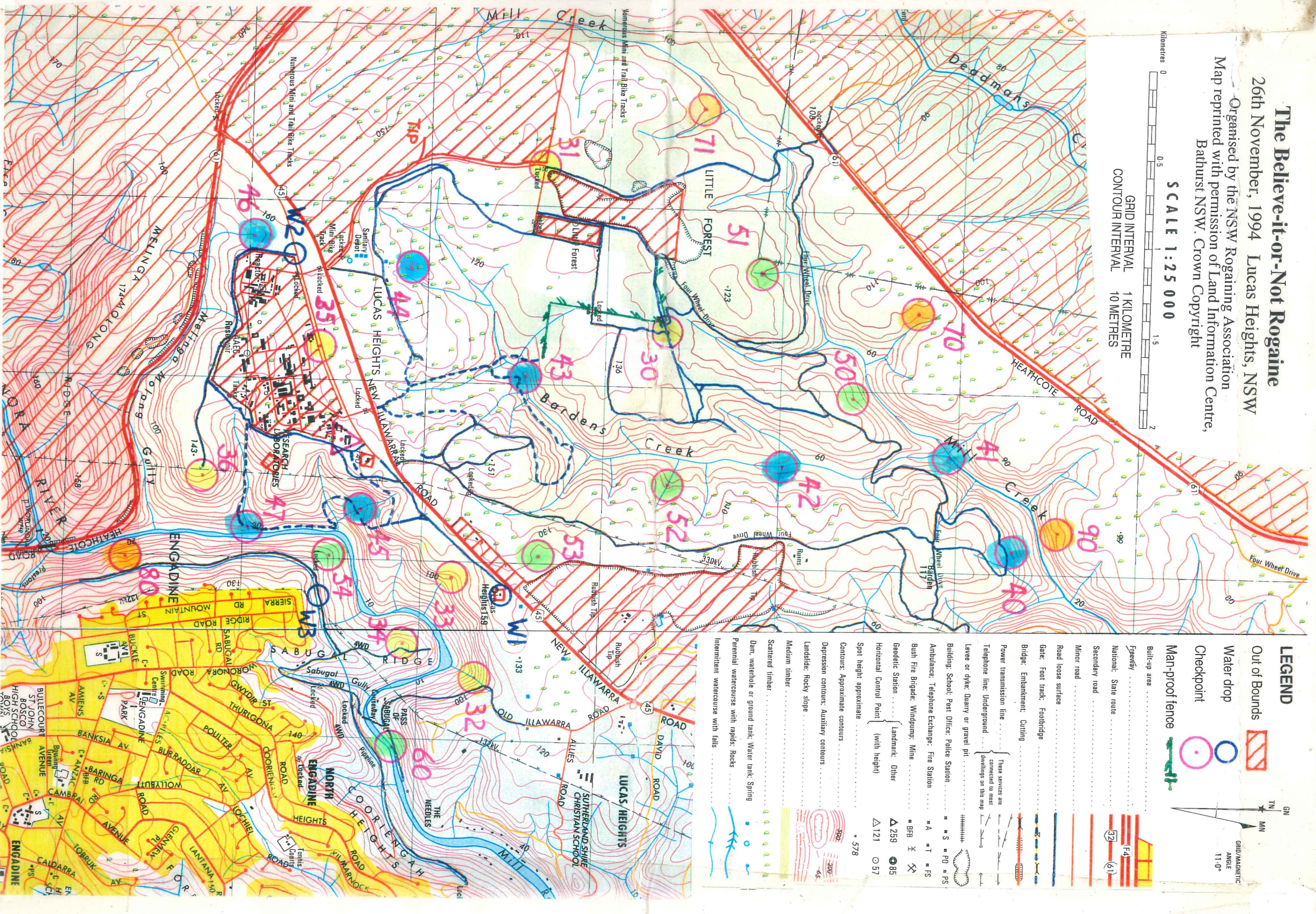
SCALE 1:25 000

GRID INTERVAL 1 KILOMETRE
CONTOUR INTERVAL 10 METRES



LEGEND

	Out of Bounds		GRID/MAGNETIC ANGLE 11.0°
	Water drop		F4
	Checkpoint		(61)
	Man-proof fence		
	Build-up area		
	Freeway		
	National, State route		
	Secondary road		
	Mirror road		
	Road base surface		
	Date, Foot track, Footbridge		
	Bridge, Embankment, Cutting		
	Power transmission line		
	Telephone line, Underground		
	Levee or dyke, Quarry or gravel pit		
	Building, School, Post Office, Police Station		
	Ambulance, Telephone Exchange, Fire Station		
	Bush Fire Brigade, Windpump, Mine		
	Geostic Station		
	Horizontal Control Point (with height)		
	Spot height approximate		
	Contours: Approximate contours		
	Depression contours: Auxiliary contours		
	Landslide: Rocky slope		
	Medium timber		
	Scattered timber		
	Dam, waterhole or ground tank, Water tank, Spring		
	Perennial watercourse with rapids, Rocks		
	Intermittent watercourse with falls		



**CONTROL LIST, "Believe-it-or-Not" Rogaine,
26th November, 1994**

No	Location	Clue
Δ	ANSTO pool area	
30	The track junction	20m at 12° (magnetic)
31	The road junction	60m at 305° (magnetic)
32	The watercourse	On top of one of a group of 3m high boulders
33	The watercourse	
34	The knoll	
35	Side of the road	Adjacent to the kangaroos
36	The end of the ridge	Viewpoint
40	The track	20m off track, on top of a 10m high crag. Viewpoint
41	Junction of Mill Creek and Bardens Creek	
42	The creek junction	
43	Bardens Creek	Underneath a 5m high rock overhang
44	A knoll	
45	The watercourse	Underneath a 7m high rock overhang
46	The gully	
47	The watercourse	Rainforest gully
50	The gully	At foot of 7m high rockface
51	The watercourse	
52	The watercourse	Between two 5m high dry waterfalls
53	The spur	
54	The spur	Top of a 4m high rock outcrop
60	Woronora River	The tidal limit
70	The gully	
71	The spur	
80	The gully	
90	The gully	

25 controls: maximum control points: 1150; score equals control number but with zero replacing last digit.

Time bonus points: for teams which delay their start 1 point per minute, maximum 240, minimum 15.

Late penalty: 10 points per minute or part thereof.

Waterdrops/drips

W1	Water supply tank	N side of perimeter fence
W2	Corner of the fence	
W3	The pipeline	Leaky pipe joint

COURSE-SETTERS' NOTES

The Area: The area has had a diverse history of usage and this is reflected in the mixture of pristine bushland, degraded terrain and present usage. The exclusion zone around the ANSTO nuclear reactor (formerly 4.5 km, now 1.6 km) encompasses, and is the reason for the existence of, much of the pristine bushland. It prevented the former Lucas Heights (No. 1) tip (out-of-bounds area E of #52) from expanding into the Bardens Creek valley. This is atypical – the area has been a dumping ground for many years: the present No. 2 tip (out-of-bounds west of #44) takes about 50% of Sydney's garbage; the out-of-bounds areas at Little Forest contain toxic chemical and low-level nuclear waste, and the open area between #30 and #43 ("the Farm") was for many years the nightsoil dump for Sutherland Shire. The creek valleys draining the area are largely pristine and are intended to act as corridors between Heathcote National Park to the South and Georges River National Park to the north. There are also many aboriginal occupation sites and some sacred sites in these areas which add to their conservation value. However, suburbia is encroaching, and the areas around Barden Trig and the western side of Mill Creek are earmarked for eventual development (Menai West). So enjoy it while it's still here!

Map Notes:

1. The map is very out of date and does not show the extent of suburban development along Old Illawarra Road nor the existence of Lucas Heights No. 2 tip.
2. Only the main 4WD and walking tracks are shown. There are *many* unmarked tracks, particularly where trail bike riding is popular, namely adjacent to Heathcote Road and the largely-cleared area NE of W1.
3. The out-of-bounds area along New Illawarra Road extends to the southern end of the concrete batching plants – don't walk down the road between the plants. Note that there is no direct access between #53 and W1.
4. Heathcote Road is out-of-bounds east of its intersection with New Illawarra Road – too dangerous.

Hazards:

1. New Illawarra Road – don't walk along it and take *great* care when crossing it; its busy, narrow & fast.
2. Rocks – slippery when wet or if covered by needles dropped from casuarinas.
3. Snakes – the biggest recorded brown snake in NSW was seen on the former nightsoil area (lots of mice!) by the local Herpetological Society some years ago. Snakes are are regularly seen by ANSTO walkers.
4. Trail bikes – often moving fast on trails: keep clear when you hear them coming.

Finish: You will be expected to calculate your own score, write it on your control card (pens provided) and hand the control card in for checking. This is to try and reduce mistakes and minimise administration.

Advice:

1. No drinkable water on the course.
2. Wear full body protection – its scratchy stuff!
3. Wear a hat and sunburn cream.
4. Take your swimmers – there are some lovely pools in the Woronora River for cooling off on a hot afternoon.