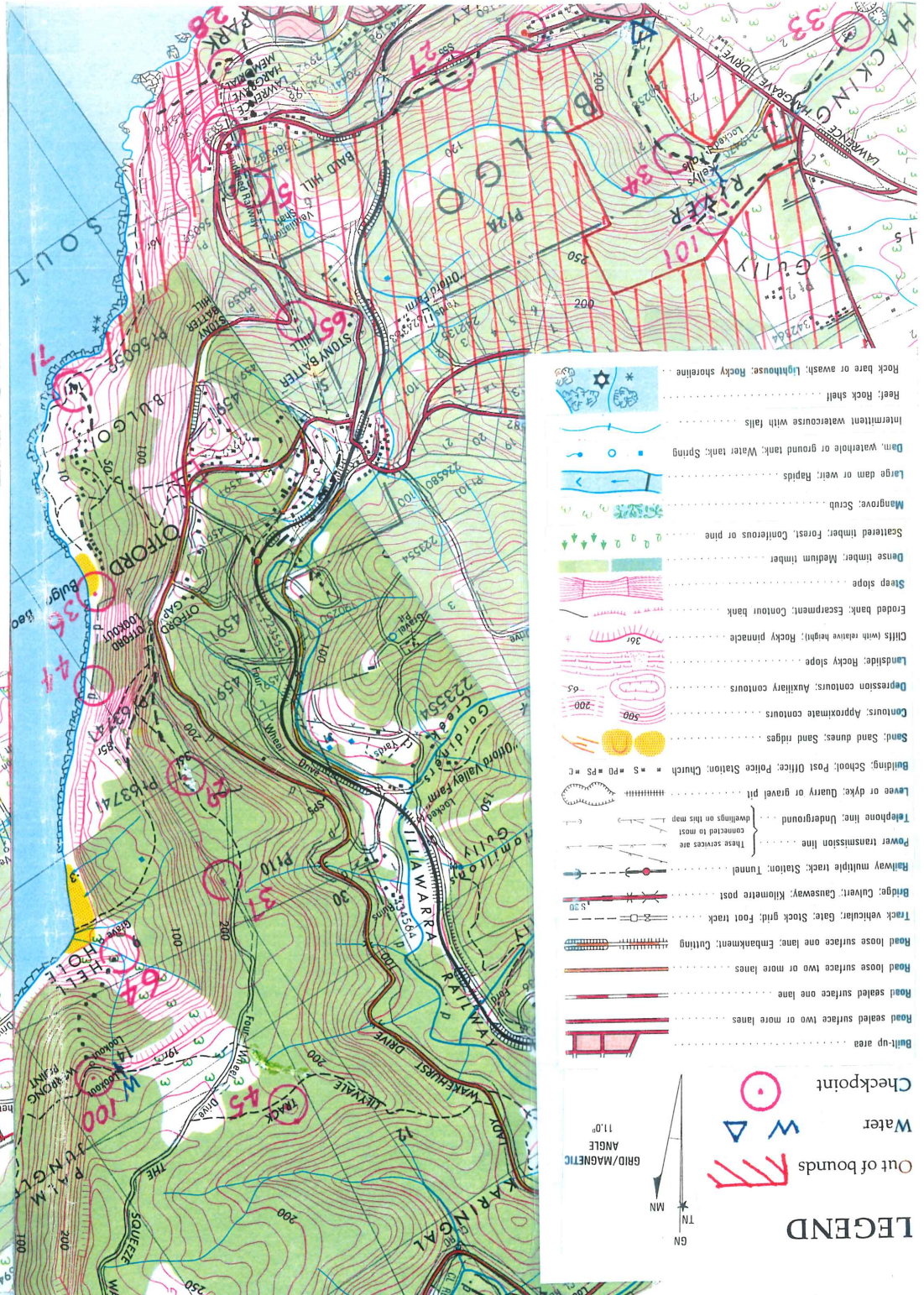


# LEGEND

- Built-up area
- Road sealed surface one lane
- Road sealed surface two or more lanes
- Road loose surface one lane
- Road loose surface two or more lanes
- Bridge; Culvert; Causeway; Kilometre post
- Track vehicular; Gate; Stock grid; Foot track
- Railway multiple track; Station; Tunnel
- Power transmission line
- Telephone line; Underground
- Lavee or dyke; Quarry or gravel pit
- Sand dunes; Sand ridges
- Contours; Approximate contours
- Contours; Auxiliary contours
- Landslide; Rocky slope
- Chiffs (with relative height); Rocky pinnacle
- Eroded bank; Escarpment; Contour bank
- Steep slope
- Dense timber; Medium timber
- Scattered timber; Forest; Coniferous or pine
- Mangrove; Scrub
- Large dam or weir; Rapids
- Dam, waterhole or ground tank; Water tank; Spring
- Intermittent watercourse with falls
- Reef; Rock shelf
- Rock bare or awash; Lighthouse; Rocky shoreline

- Checkpoint
- Water
- Out of bounds



## 1995 SOCIALGAINE

25th November 1995 Stanwell Park, NSW

Organised by the NSW Rogaining Association  
 Map reprinted with permission of the Land Information Centre,  
 Bathurst NSW. Crown Copyright  
**SCALE 1:25 000**

