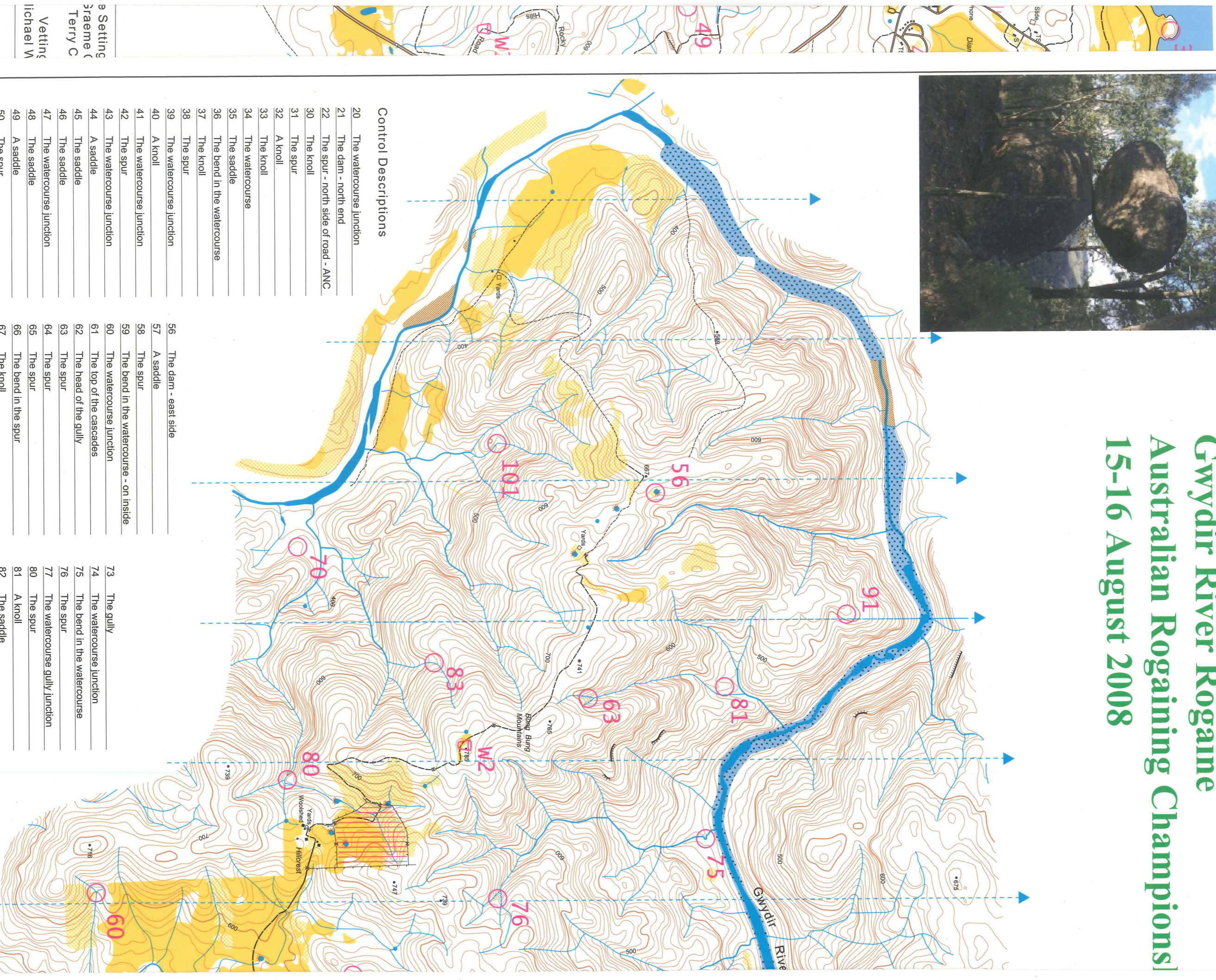
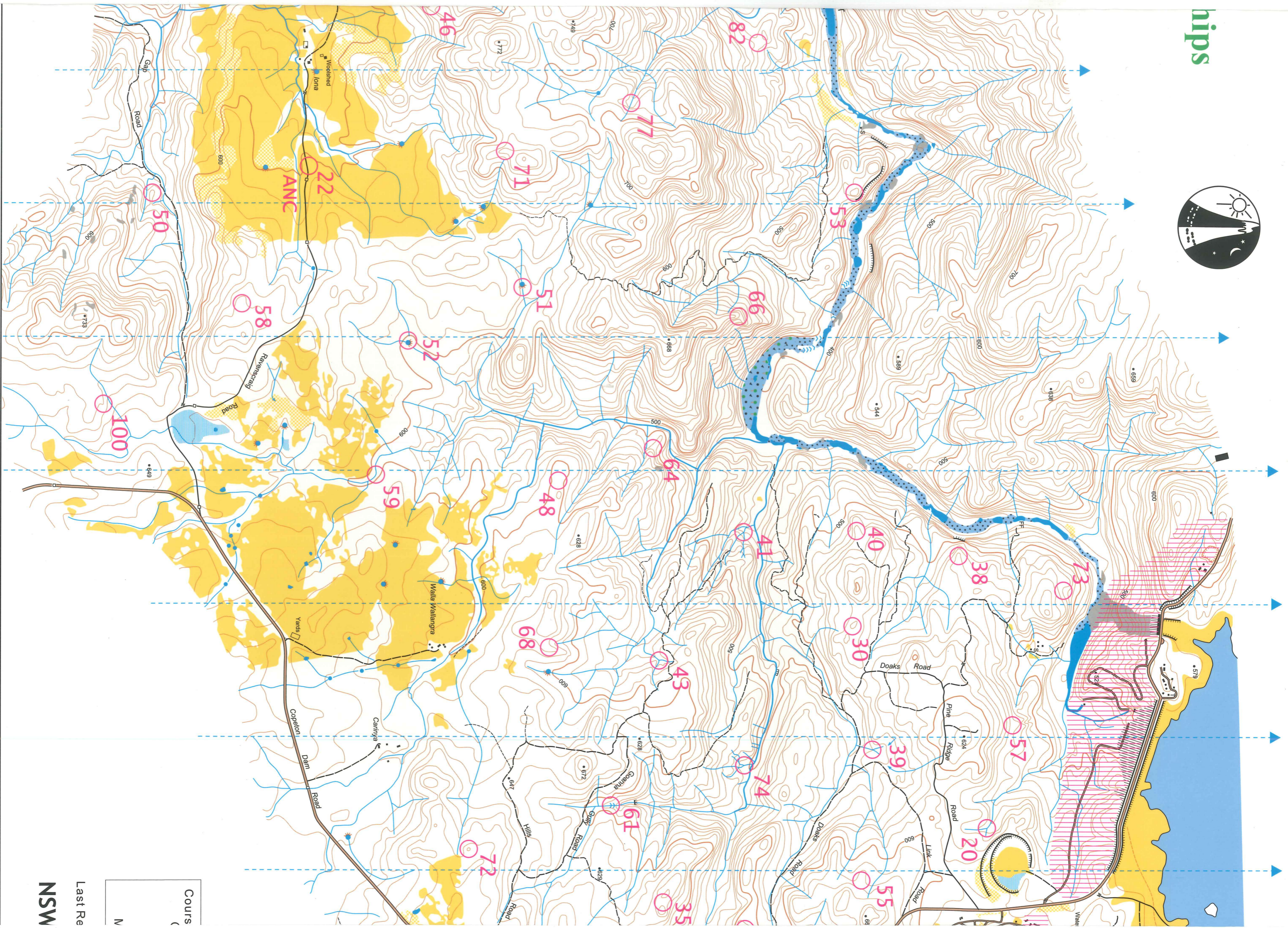
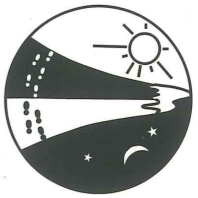


Gwydir River Rogaine Australian Rogaining Champions! 15-16 August 2008



Control Descriptions

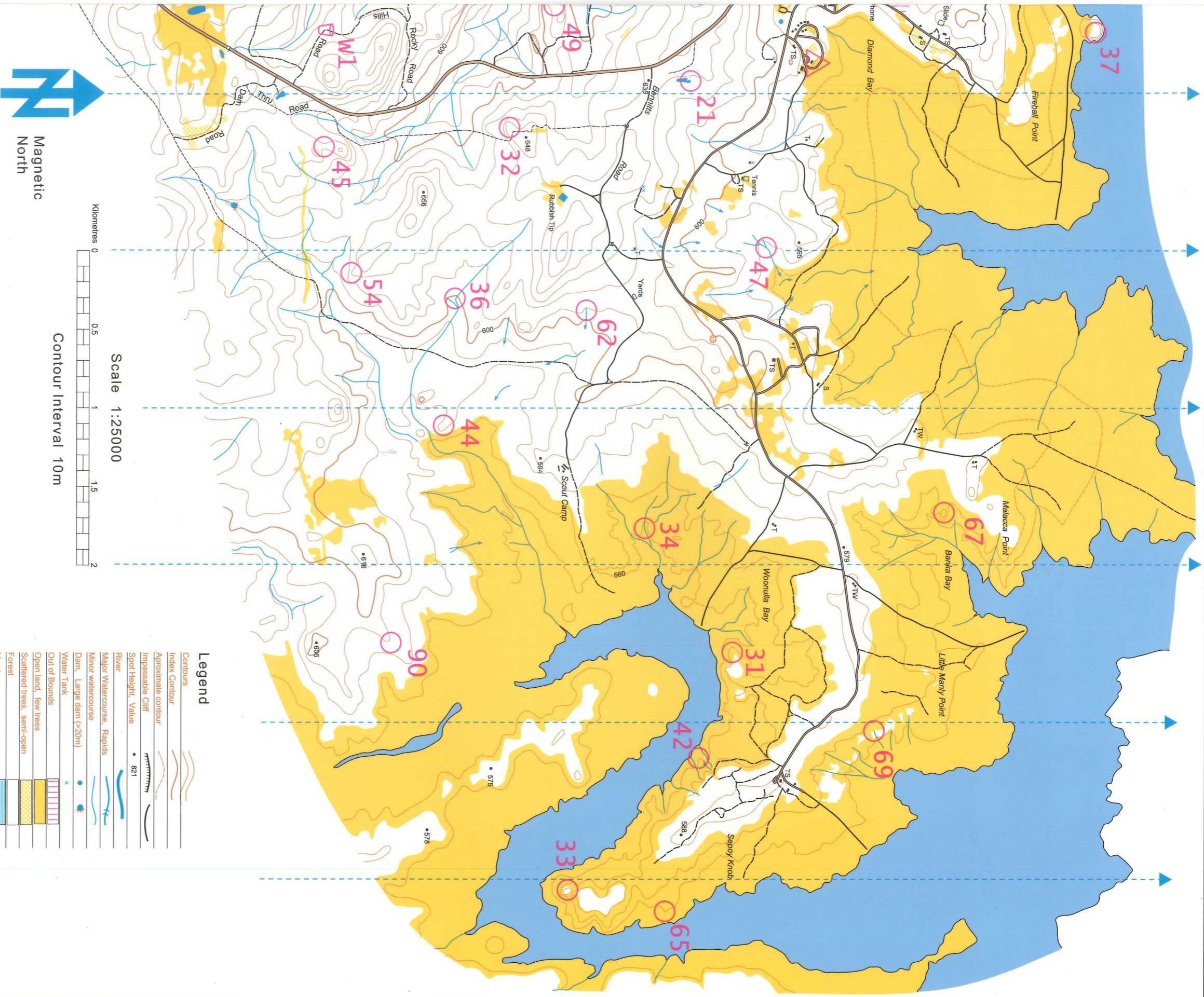
- | | | | | | |
|----|-------------------------------------|----|---|-----|--------------------------------|
| 20 | The watercourse junction | 56 | The dam - east side | 73 | The gully |
| 21 | The dam - north end | 57 | A saddle | 74 | The watercourse junction |
| 22 | The spur - north side of road - ANC | 58 | The spur | 75 | The bend in the watercourse |
| 30 | The knoll | 59 | The bend in the watercourse - on inside | 76 | The spur |
| 31 | The spur | 60 | The watercourse junction | 77 | The watercourse gully junction |
| 32 | A knoll | 61 | The top of the cascades | 80 | The spur |
| 33 | The knoll | 62 | The head of the gully | 81 | A knoll |
| 34 | The watercourse | 63 | The spur | 82 | The saddle |
| 35 | The saddle | 64 | The spur | 83 | The bend in the watercourse |
| 36 | The bend in the watercourse | 65 | The spur | 90 | The spur |
| 37 | The knoll | 66 | The bend in the spur | 91 | A knoll |
| 38 | The spur | 67 | The knoll | 100 | A knoll |
| 39 | The watercourse junction | 68 | A knoll | 101 | The bend in the watercourse |
| 40 | A knoll | 69 | The head of the watercourse | | |
| 41 | The watercourse junction | 70 | A knoll | | |
| 42 | The spur | 71 | The bend in the spur | | |
| 43 | The watercourse junction | 72 | The knoll | | |
| 44 | A saddle | | | | |
| 45 | The saddle | | | | |
| 46 | The saddle | | | | |
| 47 | The watercourse junction | | | | |
| 48 | The saddle | | | | |
| 49 | A saddle | | | | |
| 50 | The spur | | | | |
| 51 | The dam - centre of wall | | | | |
| 52 | The dam - west side | | | | |
| 53 | The knoll | | | | |
| 54 | The spur | | | | |
| 55 | A saddle | | | | |



Cours
(
N

Last Re

NSW



Legend

Contours	
Index Contour	
Approximate contour	
Impassable Cliff	
Spot Height, Value	• 821
River	
Major Watercourse, Rapids	
Minor watercourse	
Dam, Large dam (>20m)	
Water Tank	
Out of Bounds	
Open land, few trees	
Scattered trees, semi-open	
Forest	
Marsh	
Sandy Ground	
Lake	
Pond	
River Rocks	
River Rocks & Trees	
Bare Rock	
Major Sealed Road	
Minor Sealed Road	
Unsealed Road	
Vehicle Track - well defined	
Vehicle Track - mostly distinct	
Vehicle Track - often indistinct	
Stock Grid, Gate	
Buildings	
Shelter	
Toilet	
Toilet & water	
Toilets & showers	
Start/Finish	
Control, Water	

Setting & Fieldwork
Graeme Cooper
Terry Cooke
Vetting
Michael Watts

Source: Copyright
DEPARTMENT OF LANDS
PANORAMA AVENUE
BATHURST 2795
www.lands.nsw.gov.au

vision 30 July 2008

Rogaining Association www.nswrogaining.org

