

# "Bach in 24 hours"

YHA 2000



## Australian Rogaining Championships

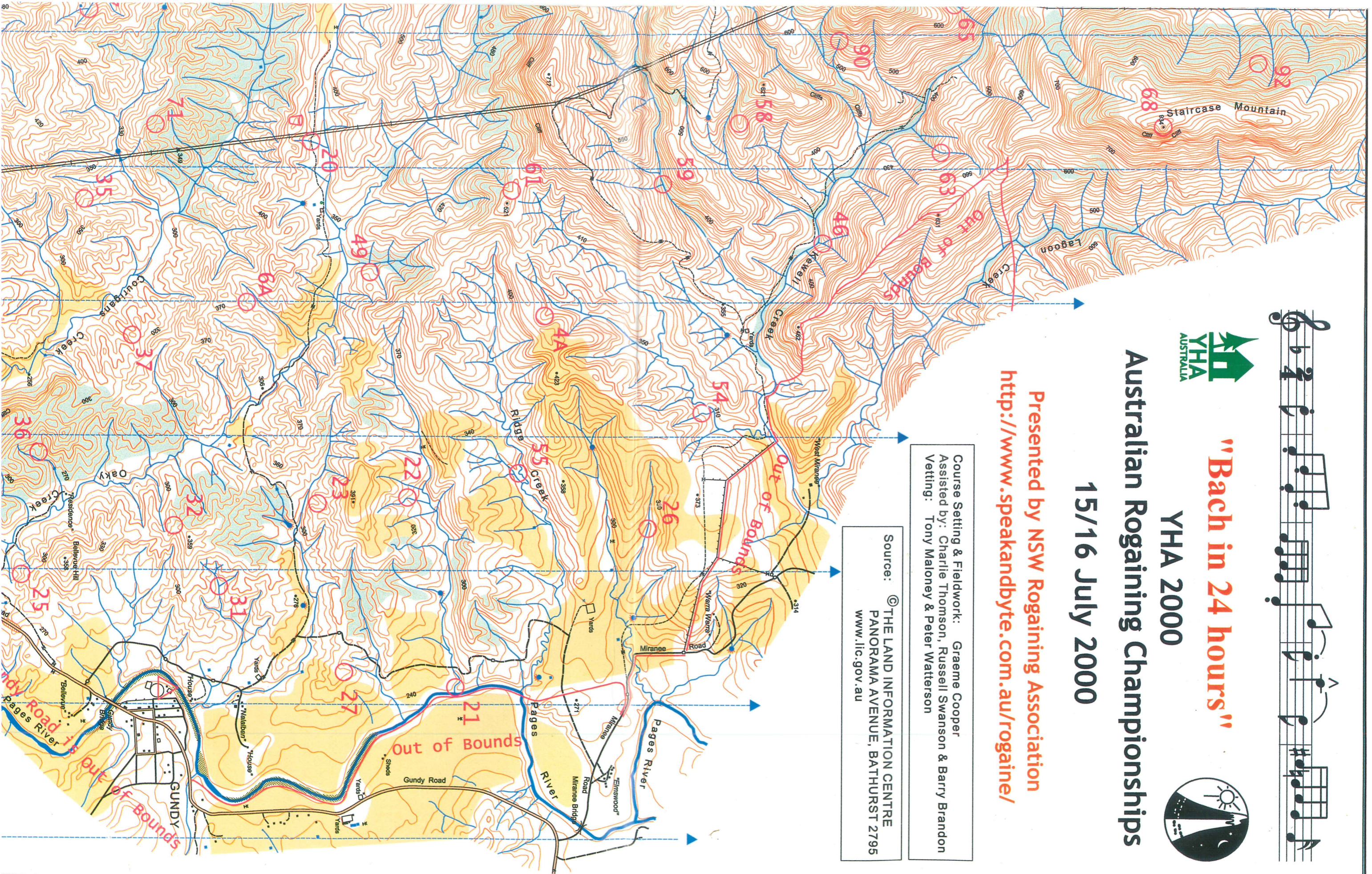
15/16 July 2000

Presented by NSW Rogaining Association

<http://www.speakandbyte.com.au/rogaine/>

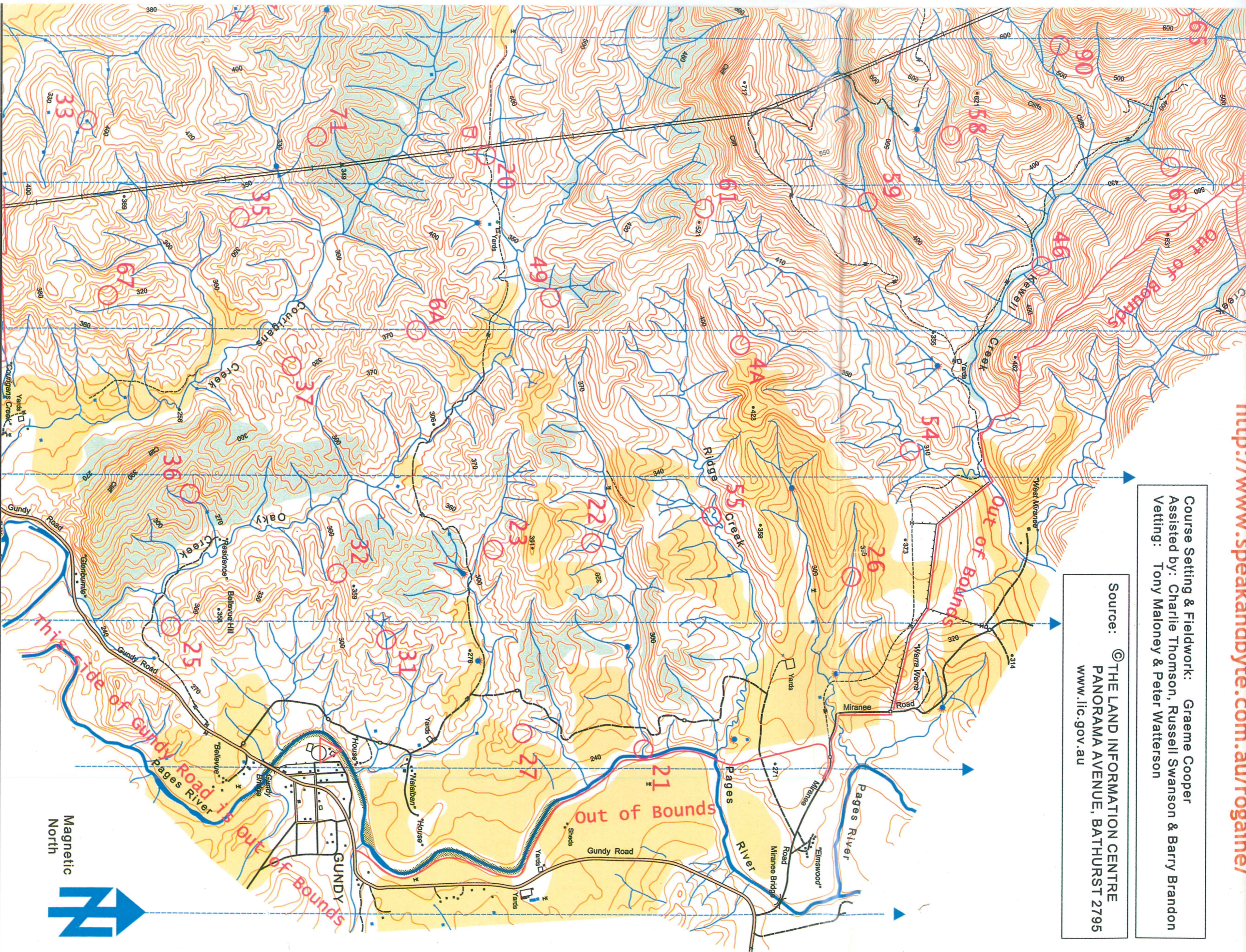
Course Setting & Fieldwork: Graeme Cooper  
Assisted by: Charlie Thomson, Russell Swanson & Barry Brandon  
Vetting: Tony Maloney & Peter Watterson

Source: © THE LAND INFORMATION CENTRE  
PANORAMA AVENUE, BATHURST 2795  
[www.lic.gov.au](http://www.lic.gov.au)

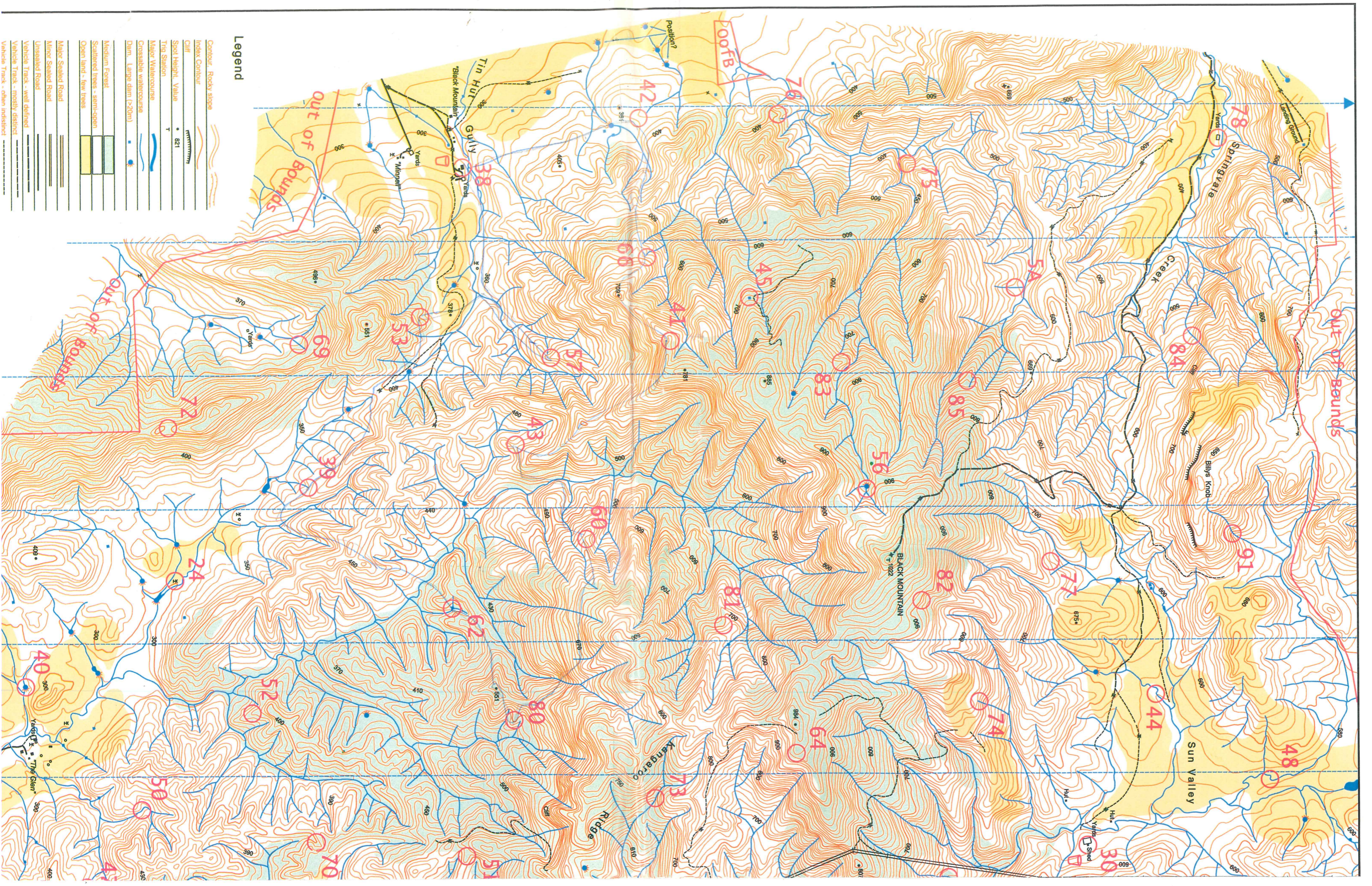


Course Setting & Fieldwork: Graeme Cooper  
Assisted by: Charlie Thomson, Russell Swanson & Barry Brandon  
Vetting: Tony Maloney & Peter Watterson

Source: © THE LAND INFORMATION CENTRE  
PANORAMA AVENUE, BATHURST 2795  
[www.lic.gov.au](http://www.lic.gov.au)

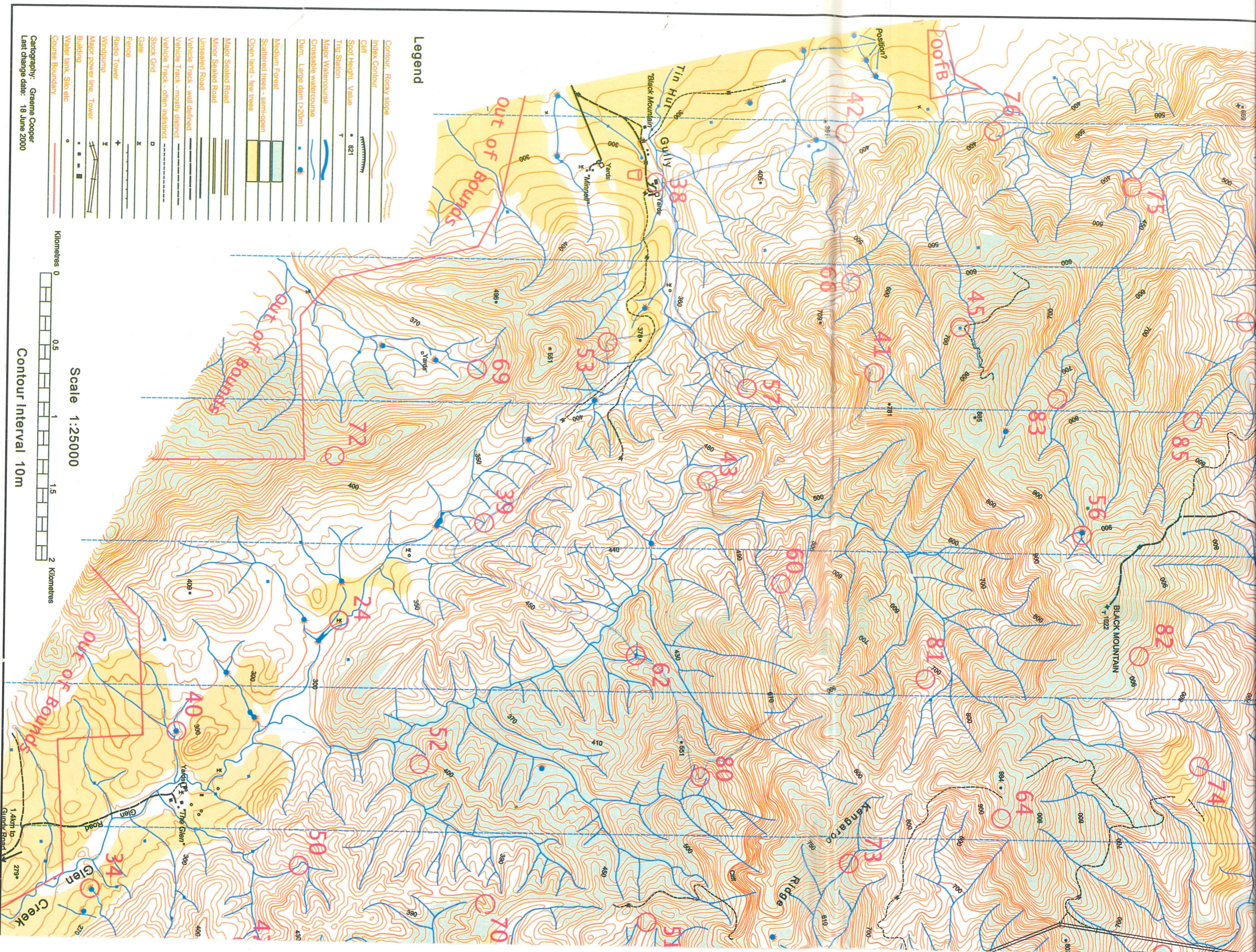


Magnetic North



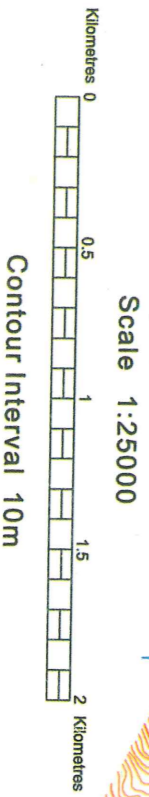
**Legend**

- Contour - Rocky slope
- Index Contour
- Climb
- Spot Height Value • 821
- Tip Station T
- Major Watercourse
- Crossable watercourse
- Dam, Large dam (>20m)
- Medium Forest
- Scattered trees - semi-open
- Open land - few trees
- Major Sealed Road
- Minor Sealed Road
- Unsealed Road
- Vehicle Track - well defined
- Vehicle Track - often indistinct



**Legend**

- Contour: Rocky slope
- Cliff
- Spot Height: Value
- Trig Station
- Major Watercourse
- Dam: Large dam (>20m)
- Medium Forest
- Scattered trees - semi-open
- Open land - low trees
- Major Sealed Road
- Minor Sealed Road
- Unsealed Road
- Vehicle Track - well defined
- Vehicle Track - mostly distinct
- Vehicle Track - often indistinct
- Stock Grid
- Gate
- Fence
- Radio Tower
- Windpump
- Major power line Tower
- Building
- Water tank, Silo etc
- Course Boundary



Cartography: Graeme Cooper  
Last change date: 18 June 2000