

1994 LAND INFORMATION CENTRE
 AUSTRALIAN ROGAINING CHAMPIONSHIPS

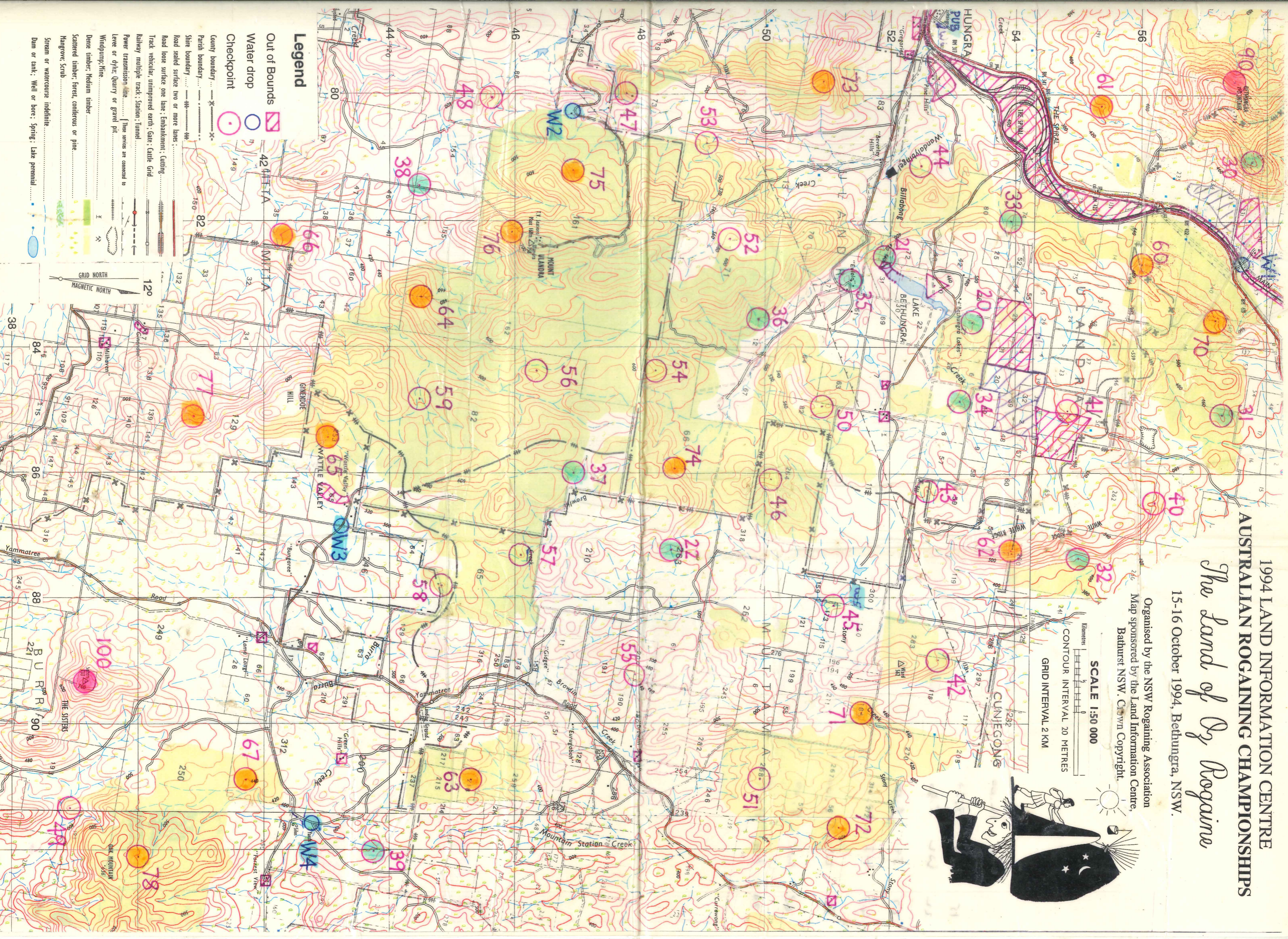
The Land of Oz Rogaine

15-16 October 1994, Bethungra, NSW.

Organised by the NSW Rogaining Association
 Map sponsored by the Land Information Centre,
 Bathurst NSW. Crown Copyright.



SCALE 1:50 000
 CONTOUR INTERVAL 20 METRES
 GRID INTERVAL 2 KM



Legend

- Out of Bounds
- Water drop
- Checkpoint
- County boundary
- Parish boundary
- Shire boundary
- Road sealed surface two or more lanes
- Road loose surface one lane; Embankment; Cutting
- Track vehicular; unimproved earth; Gate; Cattle Grid
- Railway multiple track; Station; Tunnel
- Power transmission line
- Level or dyke; Quarry or gravel pit
- Windpump; Mine
- Dense timber; Medium timber
- Scattered timber; forest, coniferous or pine
- Hangover; Scrub
- Stream or watercourse; indefinite
- Dam or tank; Well or bore; Spring; Lake perennial

GRID NORTH
 MAGNETIC NORTH
 120

CONTROL LIST, Australian Rogaining Championships, 15-16/10/94

No.	Location	Clue	Grid Ref.
Δ	Lake Bethungra		830(1)527(0)
20	The gully		836(0)533(0)
21	Billabong Creek	15 m N of a man-made pool	825(5)519(1)
22	The gully		872(4)485(1)
30	A rocky knoll		810(4)577(6)
31	A saddle		850(0)572(8)
32	The gully		873(7)550(1)
33	The spur	Plough in NE corner of a cleared paddock	820(0)539(4)
34	The watercourse junction	60 m @ 340°	848(5)531(2)
35	"Eulola"	The tin shed	829(4)513(6)
36	The watercourse bend		835(5)498(8)
37	The spur		860(0)469(4)
38	The spur	On top of a 2 m boulder	814(5)444(8)
39	The spur		920(2)437(5)
40	The gully	Base of a cliff	864(7)562(2)
41	A gully	SW side	850(0)548(5)
42	The gully	(Note: watercourse to W badly printed)	889(9)527(8)
43	A knoll	20 m @ 260°	862(8)526(2)
44	Head of a gully		811(0)524(8)
45	The watercourse junction	20 m @ 40°	881(2)511(1)
46	The spur		861(1)501(0)
47	The spur		799(8)477(7)
48	A spur		800(4)456(4)
49	A knoll		913(3)389(3)
50	The saddle		849(2)509(1)
51	The saddle		908(8)499(4)
52	The spur	A 4 m boulder	823(0)494(5)
53	A gorge	Above a 5 m waterfall	807(8)490(6)
54	The spur		843(6)482(7)
55	A shallow gully	(Caution: beware electric fences)	892(0)479(0)
56	The ridge	Old gum on ridge high point	843(7)463(4)
57	The ridge	(Note: Brawlin Ck has been corrected)	873(2)460(9)
58	The knoll	(Note: fence slightly realigned)	878(0)448(2)
59	The spur		848(2)444(8)
60	The spur	10 m S of a 10 m boulder	826(7)560(0)
61	The gully	On log across gully. (Eagle's nest nearby.)	801(8)533(5)
62	The shallow gully	E side of a treeless area	872(5)539(4)
63	A knoll		908(8)452(9)
64	The gully		832(0)444(9)
65	The "Wattle Valley" watercourse: bend	A Coota' wattle, NW bank	854(2)430(3)
66	The spur		822(2)422(6)
67	The gully		908(8)417(2)
70	The spur ("Gardiner's L'vur")	Most NW of high boulders, 10 m @ 60°	835(6)571(7)
71	Stony Creek	30 m downstream of a 10 m waterfall	898(2)515(6)
72	The gully	Amongst small (6 m) gum trees	916(6)512(0)
73	The spur		797(8)509(1)
74	The gully	At junction of two unmarked gullies	859(1)485(8)
75	The spur	On top of a 4 m boulder	812(0)469(3)
76	The spur	In crevice between 20 m boulders	821(7)459(5)
77	The gully	A cypress tree	851(0)408(7)
78	The gully	A small clearing	921(1)401(1)
90	The gully	Below a 20 m long cascade	797(7)574(6)
100	"The Sisters" summit	Lollies under witch's hat!	893(1)391(5)

52 controls, maximum score 2560, score equals control number but with zero replacing last digit.
Late Penalty: 10 points per minute or part thereof.

Note: bearings are magnetic bearings, sizes of boulders are their approximate heights

Waterdrops

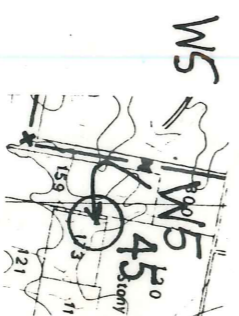
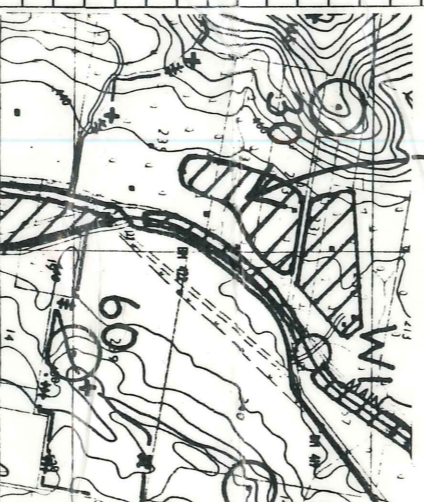
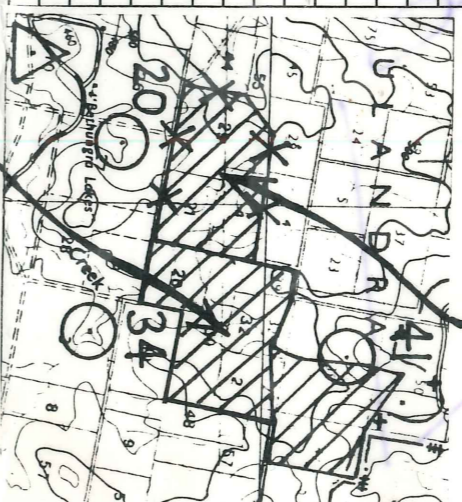
W1	Road-railway crossing	20 m NW	826(7)575(8)
W2	Road bend	SW bank	802(7)468(6)
W3	Gate	fruit too	868(4)432(4)
W4	Road Junction	fruit too, amongst big gums	915(7)427(5)
W5	at Control 45	see above, under Kurraiong tree	881(2)511(1)
W6	Bethungra pub	(water) tap at front right corner of pub	788(4)527(0)

MAP CORRECTIONS
YOU MUST MAKE!

NO LONGER
OUT-OF-BOUNDS

NEW OUT-OF-BOUNDS AREAS

NEW WATER DROPS:



HRH 12.00
W6 3.30
W2 5.00
W3 6.00
W3 10.30
W4 3.00
W5 8.00
HRH 11.30

HRH 20
21
22
30
31
32
33
34
35
36
37
38
39
40
41
42
43
44
45
46
47
48
49
50
51
52
53
54
55
56
57
58
59
60
61
62
63
64
65
66
67
70
71
72
73
74
75
76
77
78
90
100
W1
W2
W3
W4
W5
W6