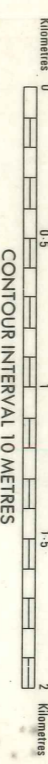


NSW ROGAINING CHAMPIONSHIPS

28-29th AUGUST 1993

SCALE 1:25 000



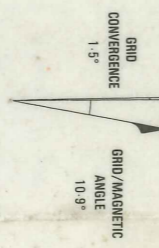
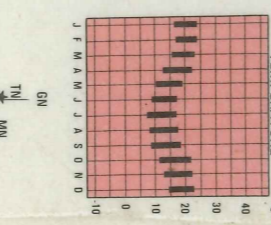
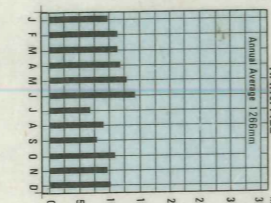
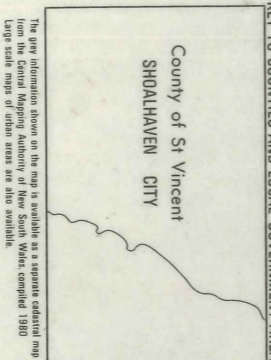
CONTOUR INTERVAL 10 METRES

To the nearest metre on the Australian Height Datum.
Geodetic Survey of New South Wales
Grid lines are shown at intervals of 1000 metres from False Origin, Zone 56
Integrated Survey Grid information shown along border in grey. Zone 56-1
Central Mapping Authority of New South Wales.
Aerial photography - 1979. Field revision - 1982. Printing - 1984.
Bureau of Meteorology, Department of Science.
Contours to National Mapping Council standards.
Contours in grey. Contour interval 10 metres.
Contours in black. Contour interval 20 metres.
Contours in red. Contour interval 50 metres.
Contours in blue. Contour interval 100 metres.
Contours in green. Contour interval 200 metres.
Contours in yellow. Contour interval 500 metres.
Contours in brown. Contour interval 1000 metres.
Contours in pink. Contour interval 2000 metres.
Contours in purple. Contour interval 5000 metres.
Contours in orange. Contour interval 10000 metres.
Contours in grey. Contour interval 20000 metres.
Contours in black. Contour interval 50000 metres.
Contours in red. Contour interval 100000 metres.
Contours in blue. Contour interval 200000 metres.
Contours in green. Contour interval 500000 metres.
Contours in yellow. Contour interval 1000000 metres.
Contours in brown. Contour interval 2000000 metres.
Contours in pink. Contour interval 5000000 metres.
Contours in purple. Contour interval 10000000 metres.
Contours in orange. Contour interval 20000000 metres.
Contours in grey. Contour interval 50000000 metres.
Contours in black. Contour interval 100000000 metres.

ROADS
Disruption of roads and heights does not necessarily indicate a public right of way.
Unsealed roads may be impassable after rain. A cadastral road depicted in grey does
not necessarily indicate an existing road on the ground.
Place names, as defined by the Geographical Names Act, 1986, are approved names.

NONMENCLATURE

- Build-up area
- Road sealed surface two or more lanes
- Road sealed surface one lane
- Road loose surface two or more lanes
- Road loose surface one lane; Embankment; Cutting
- Track/vehicular: Gate, Stock grid, Foot track
- Road markers: National, State, Freeway
- Bridge: Culvert; Causeway; Kilometer post
- Railway multiple track; Station; Tunnel
- Railway single track; Siding or loop
- Light railway or tramway
- Power transmission line
- Telephone line: Underground
- Levee or dyke; Quarry or gravel pit
- Building; School; Post Office; Police Station; Church
- Windmills; Mine/Heritage Feature; Telephone Exchange
- Geodetic Station (with height); Landmark; Other
- Horizontal control point (with height); Landmark; Other
- Bench mark (with height); Spot height approximate
- Sand; Sand dunes; Sand ridges
- Contours: Approximate contours
- Depression: permanent; Auxiliary contours
- Landslide; Rocky slope
- Chills from volcanic material; Rocky point
- Enclad bank; Escarpment; Contour bank
- Step slope
- Glacier; Mud
- Dense timber; Medium timber
- Scattered timber; Forest; Coniferous or pine
- Orchard; plantation or vineyard; Windbreak
- Mangrove; Scrub
- Perennial watercourse with rapids; Rocks
- Intermittent watercourse with falls
- Wall or bore; Irrigation canal and drains
- Large dam or weir; Rapids
- Dam; waterhole or ground tank; Water trap; Weir
- Wet; Dry swamp; Land subject to inundation
- Perennial; Intermittent; Dry lake or watercourse
- Breakwater
- Bathymetric depths in metres; Jetty and wharf
- Wreck exposed; Anchorage; Slipway
- Reef; Rock shell
- Rock bare or swack; Lighthouse; Rocky shoreline
- Parish (Catholic subdivisions of the County)
- State boundary
- County; Parish boundary
- Shire boundary; Aboriginal Site (Public access)
- State Forest; National Forest boundary
- State Reservation Area; National Park boundary
- Deposited Plan and Lot number
- Cadastral road; Portion and number
- Main Subdivision Area; Catchment Area boundary
- 5345298
- 1/6
- 9
- 1/6
- NORTON

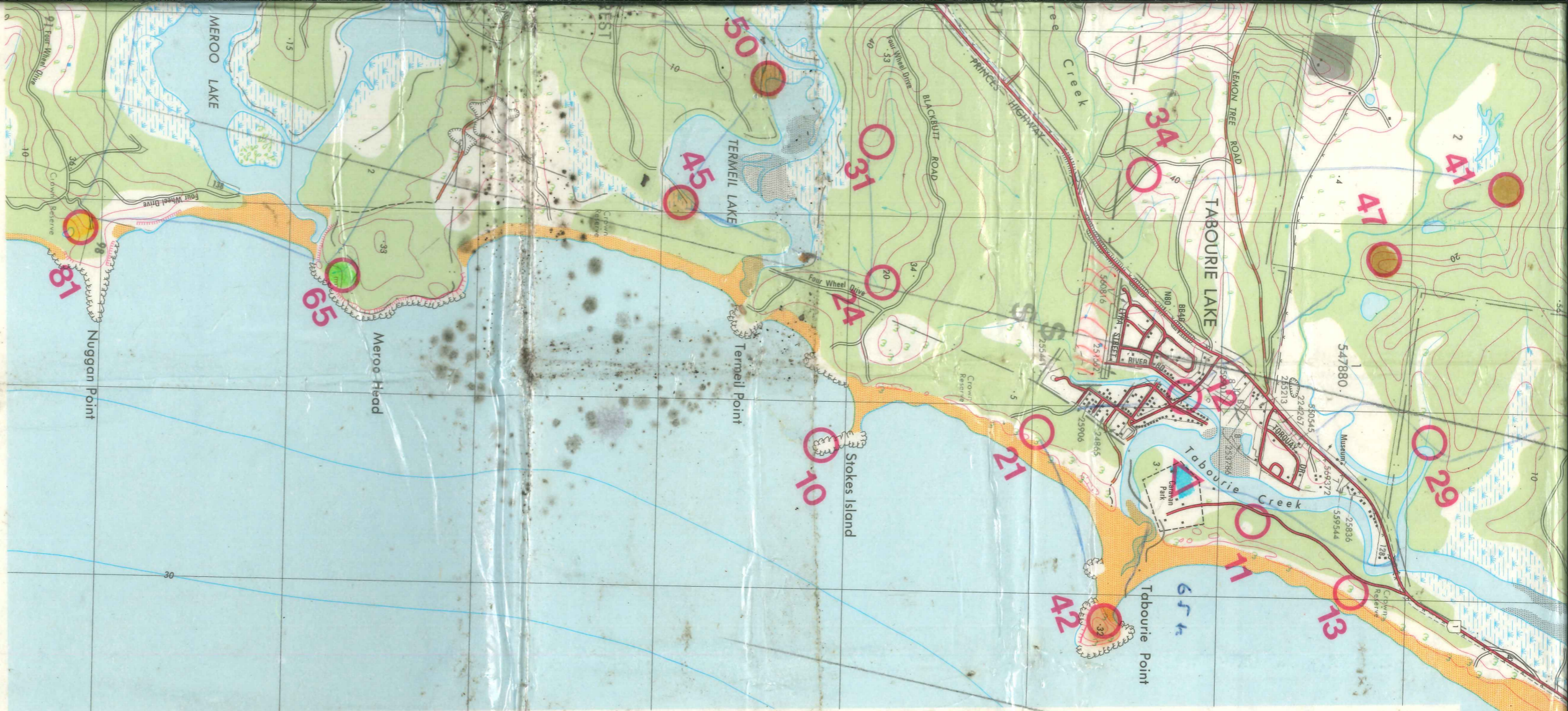


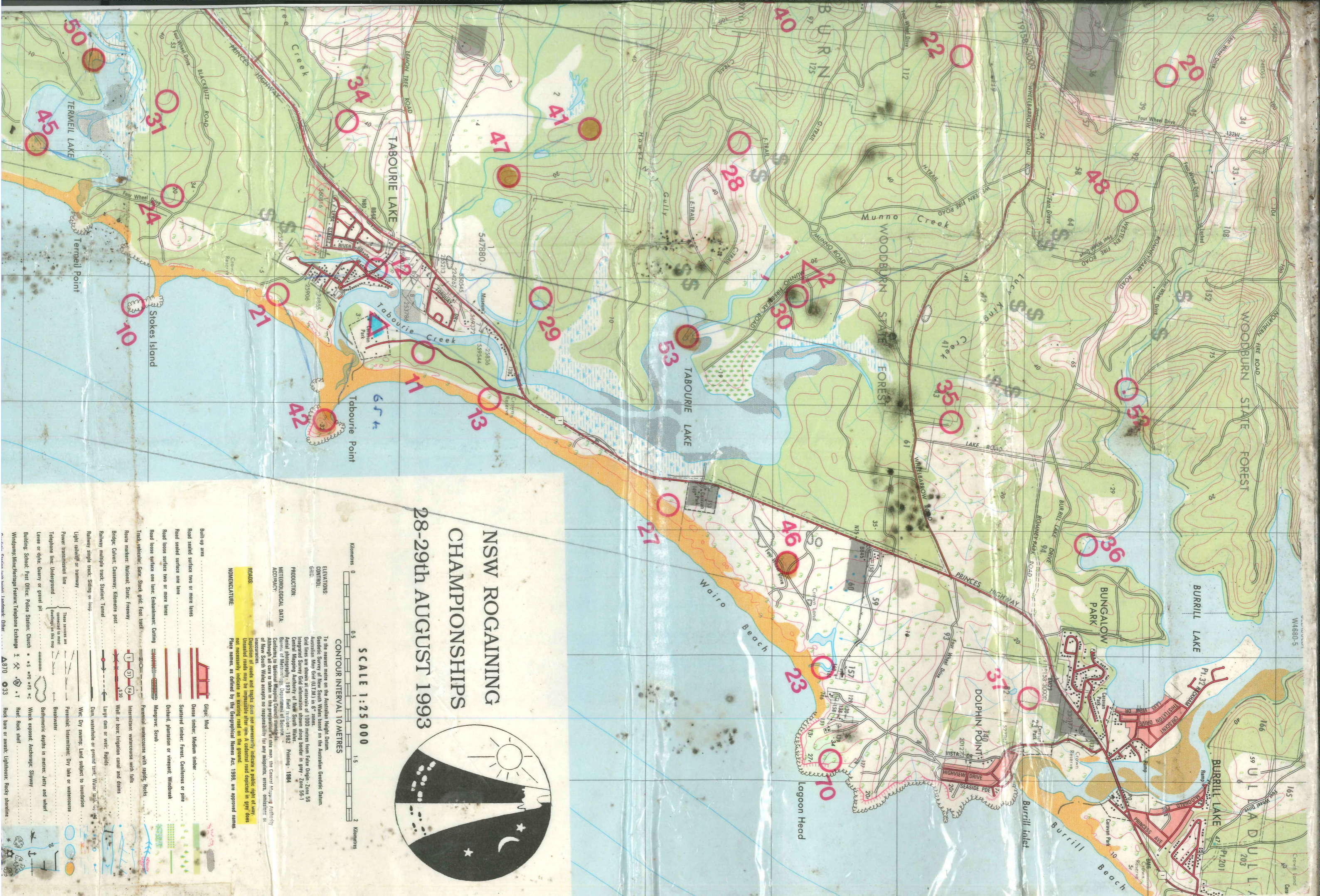
TRUE NORTH, GRID NORTH AND MAGNETIC NORTH ARE SHOWN DIAGONALLY FROM THE CENTRE OF THE MAP. MAGNETIC NORTH IS CORRECT FOR 1980 AND VARIES EQUALLY BY 0.1° IN APPROXIMATELY THREE YEARS.



© CROWN COPYRIGHT
REPRODUCED FROM CMA
TOPOGRAPHIC MAP
TABOURIE 8927-11-S WITH
THE PERMISSION OF THE
LAND INFORMATION
CENTRE, PANORAMA AVE,
BATHURST, NSW.

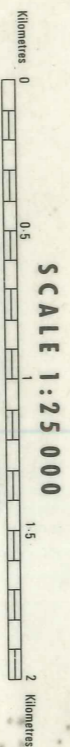
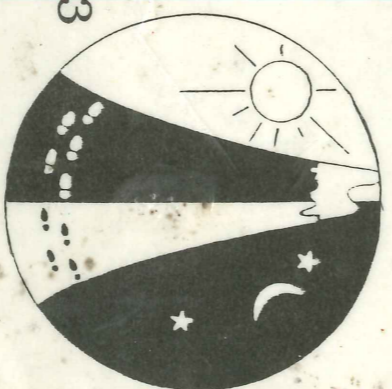
Proudly Printed by the Land Information Centre, Bathurst.





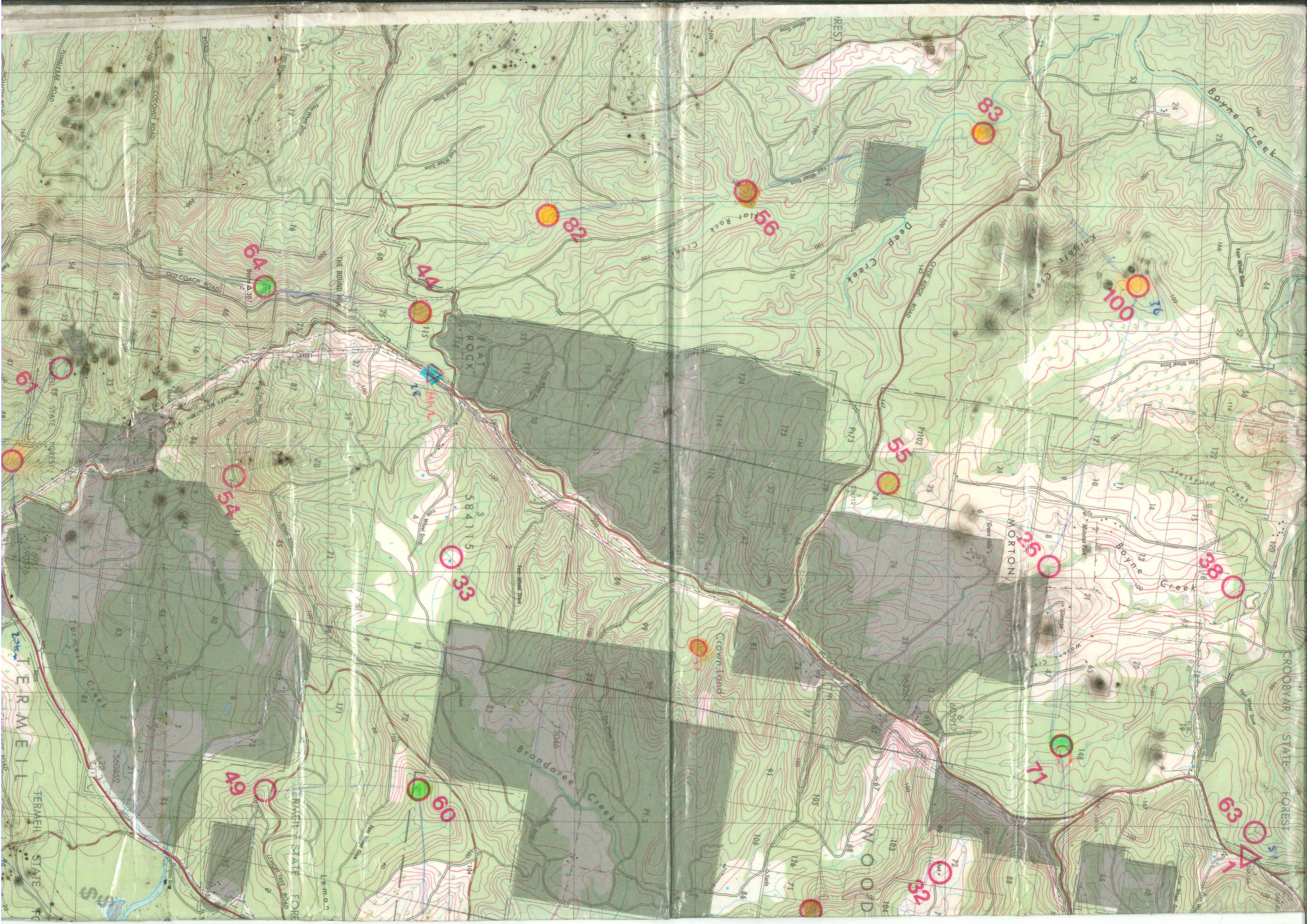
NSW ROGAINING CHAMPIONSHIPS

28-29th AUGUST 1993



To the nearest metre on the Australian Height Datum.
 Geodetic Survey of New South Wales. Based on the Australian Geodetic Datum.
 Grid lines are shown at intervals of 1000 metres from False Origin. Zone 56
 Integrated Survey Grid information shown along border in grey. Zone 56-1
 Central Mapping Authority of New South Wales.
 Aerial photography: 1979 Field revision: 1982 Printing: 1984
 Bureau of Meteorology, Department of Science
 Geomatics to National Mapping Council Standard. The name of the Central Mapping Authority
 Although the Crown accepts no responsibility for any omissions, errors, omissions or
 inaccuracies.
 Unsealed roads may be impassable after rain. A cascading road depicted in grey does
 not necessarily indicate an existing road on the ground.
 Place names, as defined by the Geographical Names Act, 1986, are approved names.

- ROADS**
- Built-up area
 - Road sealed surface two or more lanes
 - Road sealed surface one lane
 - Road loose surface two or more lanes
 - Road loose surface one lane; Embankment; Cutting
 - Track/vehicular gate; Stock grid; Foot track
 - Road markers: National; State; Freeway
 - Bridge: Culvert; Causeway; Kilometer post
 - Railway multiple track; Station; Tunnel
 - Railway single track; Sliding or loop
 - Light railway or tramway
 - Power transmission line
 - Telephone line; Underground
 - Level or dyke; Quarry or gravel pit
 - Building; School; Post Office; Police Station; Church
 - Windpump; Heritage Feature; Telephone Exchange
- NONMENCLATURE**
- Giggle; Mud
 - Dense timber; Medium timber
 - Scattered timber; Forest; Coniferous or pine
 - Orchard; plantation or vineyard; Windbreak
 - Mangrove; Seab
 - Perennial watercourse with rapids; Rocks
 - Intermittent watercourse with falls
 - Well or bore; Irrigation canal and drains
 - Large dam or weir; Rapids
 - Dam; waterhole or ground tank; Water tank; Silo
 - Wet; Dry swamp; Land subject to inundation
 - Perennial; Intermittent; Dry lake or watercourse
 - Bathwater
 - Salynometric depths in metres; Jetty and wharf
 - Wreck exposed; Anchorage; Slipway
 - Ref; Rock shell
 - Rock bars or awash; Lighthouse; Rocky shoreline



COCONUT ROAD
TUNNEY ROAD
MORTON

FLAT ROCK
WOODRUM ROAD
MORTON

DEEP CREEK
BOYNE CREEK
MORTON

WOODRUM ROAD
MORTON

BOYNE CREEK
MORTON

TERRELL STATE FOREST
CROOKER STATE FOREST

64
65
66

44
46
55
58
59
60

81
82
83
88
99
100
101
102

55
56
57
58
59
60
61
62
63
64

71
72
73
74
75
76
77
78
79
80

81
82
83
84
85
86
87
88
89
90

10
11
12
13
14
15
16
17
18
19
20

21
22
23
24
25
26
27
28
29
30

31
32
33
34
35
36
37
38
39
40

41
42
43
44
45
46
47
48
49
50

51
52
53
54
55
56
57
58
59
60

61
62
63
64
65
66
67
68
69
70

71
72
73
74
75
76
77
78
79
80

81
82
83
84
85
86
87
88
89
90

91
92
93
94
95
96
97
98
99
100

101
102
103
104
105
106
107
108
109
110

111
112
113
114
115
116
117
118
119
120

121
122
123
124
125
126
127
128
129
130

131
132
133
134
135
136
137
138
139
140

141
142
143
144
145
146
147
148
149
150

151
152
153
154
155
156
157
158
159
160

161
162
163
164
165
166
167
168
169
170

171
172
173
174
175
176
177
178
179
180

181
182
183
184
185
186
187
188
189
190

191
192
193
194
195
196
197
198
199
200

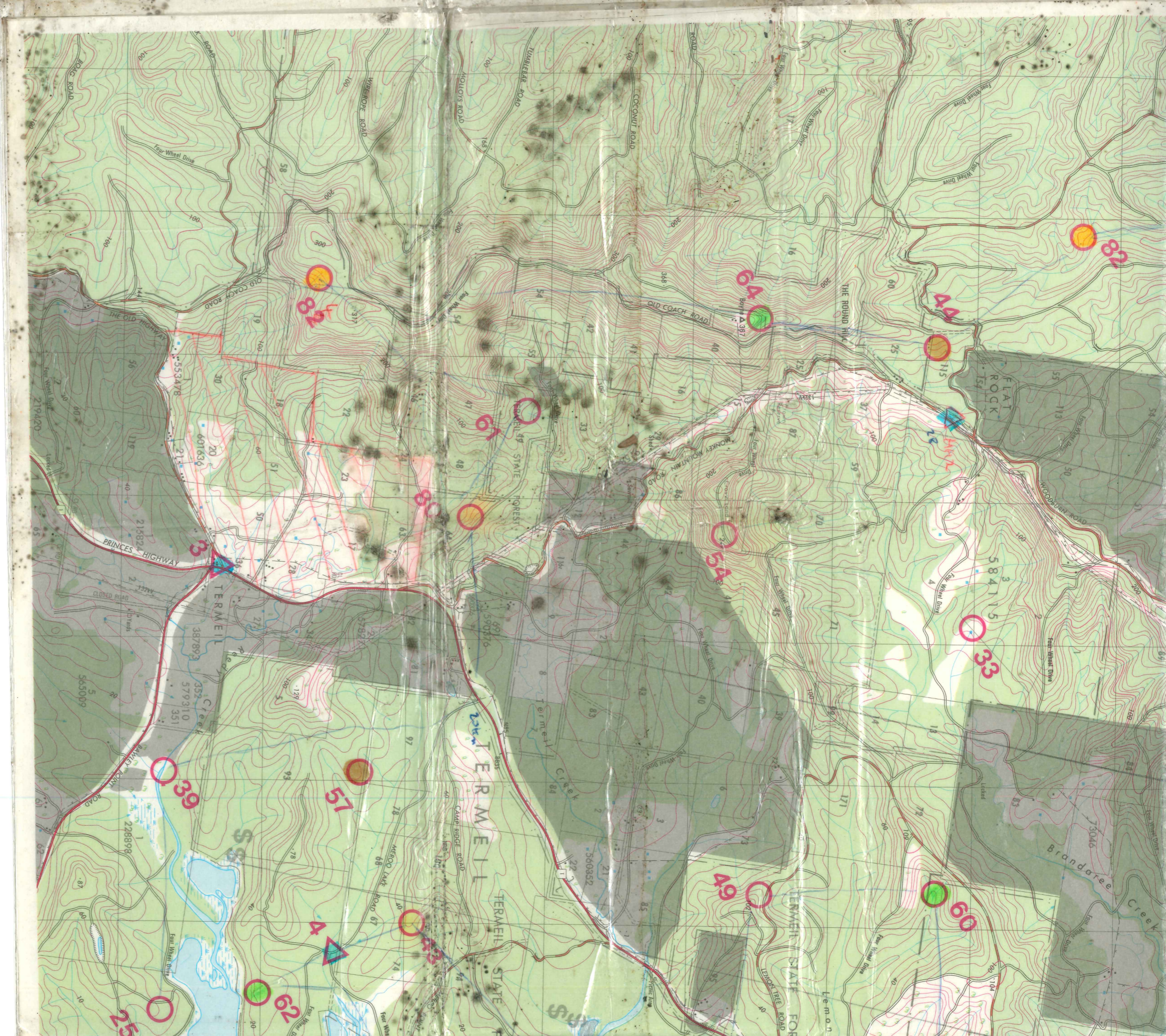
201
202
203
204
205
206
207
208
209
210

211
212
213
214
215
216
217
218
219
220

221
222
223
224
225
226
227
228
229
230

231
232
233
234
235
236
237
238
239
240

241
242
243
244
245
246
247
248
249
250



Control List

ID	Description	Points	Reference
10	South end of Stokes Island	20	6425 7284
11	The clearing: 50m @ 170°	20	6462 7515
12	Under the bridge, eastern corner	20	6395 7478
13	Base of the sand dune	20	6500 7567
20	The creek junction	20	6237 8110
21	Head of the gully	20	6416 7399
22	A knoll	20	6221 7943
23	The spur; a banksia grove	20	6713 7837
24	A gully junction	20	6337 7315
25	The spur, near to 2m diameter spotted gum	20	6162 6923
26	A bend in Boyne Creek	20	5890 7980
27	The ridge	20	6582 7713
28	The spur	20	6292 7768
29	The creek junction	20	6417 7609
30	The broad gully	30	6414 7215
31	The spur	30	6260 7310
32	The shed (ruin): 25m east in a coral tree copse	30	6139 7895
33	The dam, 10m east	30	5890 7498
34	The track	30	6175 7455
35	End of the track	30	6514 7940
36	The lakeside/vegetation boundary	30	6614 8047
37	End of the forest	30	6736 8004
38	A bend in Boyne creek, eastern side	30	5905 8129
39	The creek junction	30	5995 6927
40	The saddle: 30m @ 80°	40	6171 7791
41	The spur: S edge of a 20m clearing: next to a track	40	6279 7648
42	The summit, Crampton Island	40	6516 7438
43	The spur	40	6101 7102
44	The broad spur	40	5694 7472
45	Corner of the forest: a coast banksia	40	6295 7207
46	The ridge: 10m east of an indistinct track	40	6627 7811
47	The spur: among cycads	40	6320 7582
48	The gully: below a 1m cliff	40	6337 8078
49	The spur	40	6079 7348
50	Corner of the lake; sedge/li-tree boundary	50	6228 7253
51	A gully junction	50	5959 7700
52	The point (cross creek on dry log, not submerged bridge	50	6488 8080
53	The point (note creek crossing to north is 1m deep)	50	6447 7730
54	The spur, Monkey Mountain	50	5824 7322
55	The gully	50	5825 7850
56	The spur	50	5590 7733
57	The spur: south edge of a 50m clearing	50	5995 7064
60	The watercourse, 20m east of junction	60	6080 7474
61	The gully	60	5738 7181
62	The tiny spur, among doorned giants	60	6150 6995
63	The small spur	60	6106 8148
64	The spur: north end of the clearing	60	5672 7345
65	End of the cliff: at base	60	6337 7025
70	End of the cliff: 25m @ 220°; N-E corner of a clearing	70	6785 7845
71	The broad gully <i>creek junction box 7m deep</i>	70	6037 7992
80	The gully	80	5813 7142
81	N end of the lake/clearing	80	6315 6885
82	The gully	80	5611 7572
83	The gully	80	5542 7923
84	The watercourse; between two 4m falls	80	5646 7033
100	The spur: west side of an old logging clearing	100	5662 8048
HH			6440 7480
HH2	Flat Rock Cafe (7pm -> 7am)		5739 7487
W1	The saddle, west side of road, near electricity pole		6125 8143
W2	The road junction, 15m @ 20°		6397 7825
W3	Tap in garden at front of Terneil shop		5850 6966
W4	The road junction, 10m east		6121 7048
	TOTAL POINTS --	2380	
	Late Penalty: 10 points per minute or part thereof.		