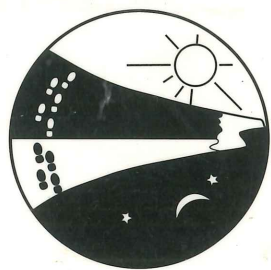
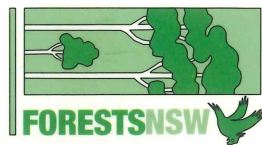


been compiled from the following sources:
y & medium to high resolution aerial photography.

(teering Club)

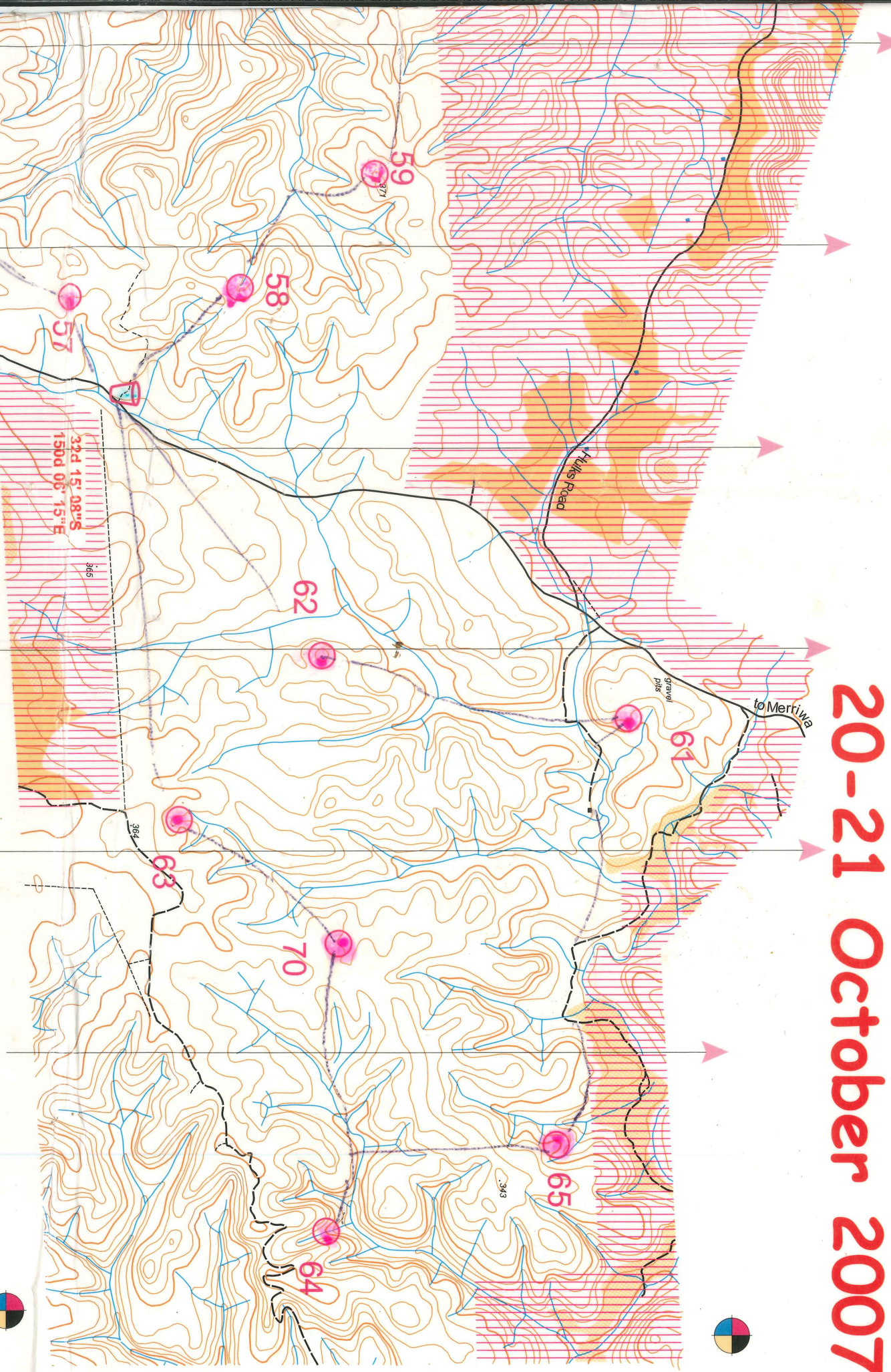


Goulburn River Gallop

NSW Rogaining

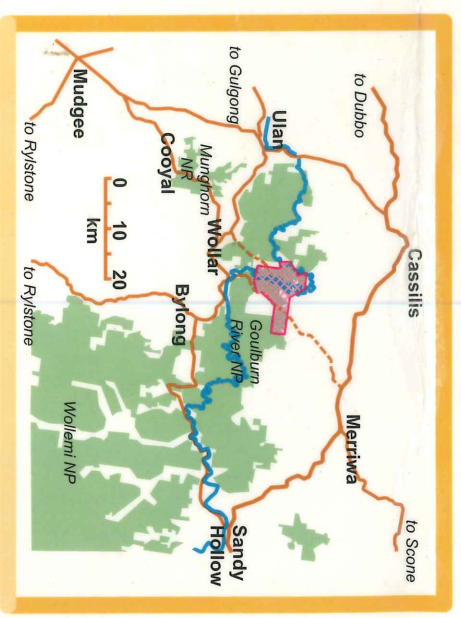
Championships

20-21 October 2007



Magnetic North

0km 1km 2km
scale 1:25000
contour interval 10m
major contours 50m



the map shop
newcastle

177 Maitland Rd
Tighes Hill

02 4969 4471

www.themapshop.com.au

- 10 The eastern watercourse, head
- 11 The watercourse
- 12 The gully
- 13 The watercourse
- 14 A rocky knoll
- 20 The gully
- 21 The gully
- 22 The spur
- 23 The gully
- 24 The knoll, west part
- 25 The gully
- 26 The watercourse
- 27 The southern watercourse junction
- 28 A lone tree (50m to track) WATER
- 29 The watercourse junction
- 30 The gully
- 31 A knoll, north part
- 32 The shallow gully
- 33 The gully
- 34 The gully
- 35 The gully
- 36 The watercourse
- 37 The watercourse
- 38 The watercourse
- 39 The spur on a small rocky knoll
- 40 The knoll, east part
- 41 The watercourse
- 42 The gully head
- 43 The watercourse
- 44 The gully
- 45 The watercourse
- 46 The saddle
- 47 The watercourse bend
- 48 The spur
- 50 The spur
- 51 The watercourse
- 52 The knoll, east part
- 53 The watercourse
- 54 The watercourse junction
- 55 The watercourse
- 56 The watercourse junction
- 57 The gully
- 58 The watercourse
- 59 The knoll, west part
- 60 A knoll
- 61 The spur
- 62 The knoll
- 63 The gully
- 64 The watercourse
- 65 The spur
- 70 A gully junction

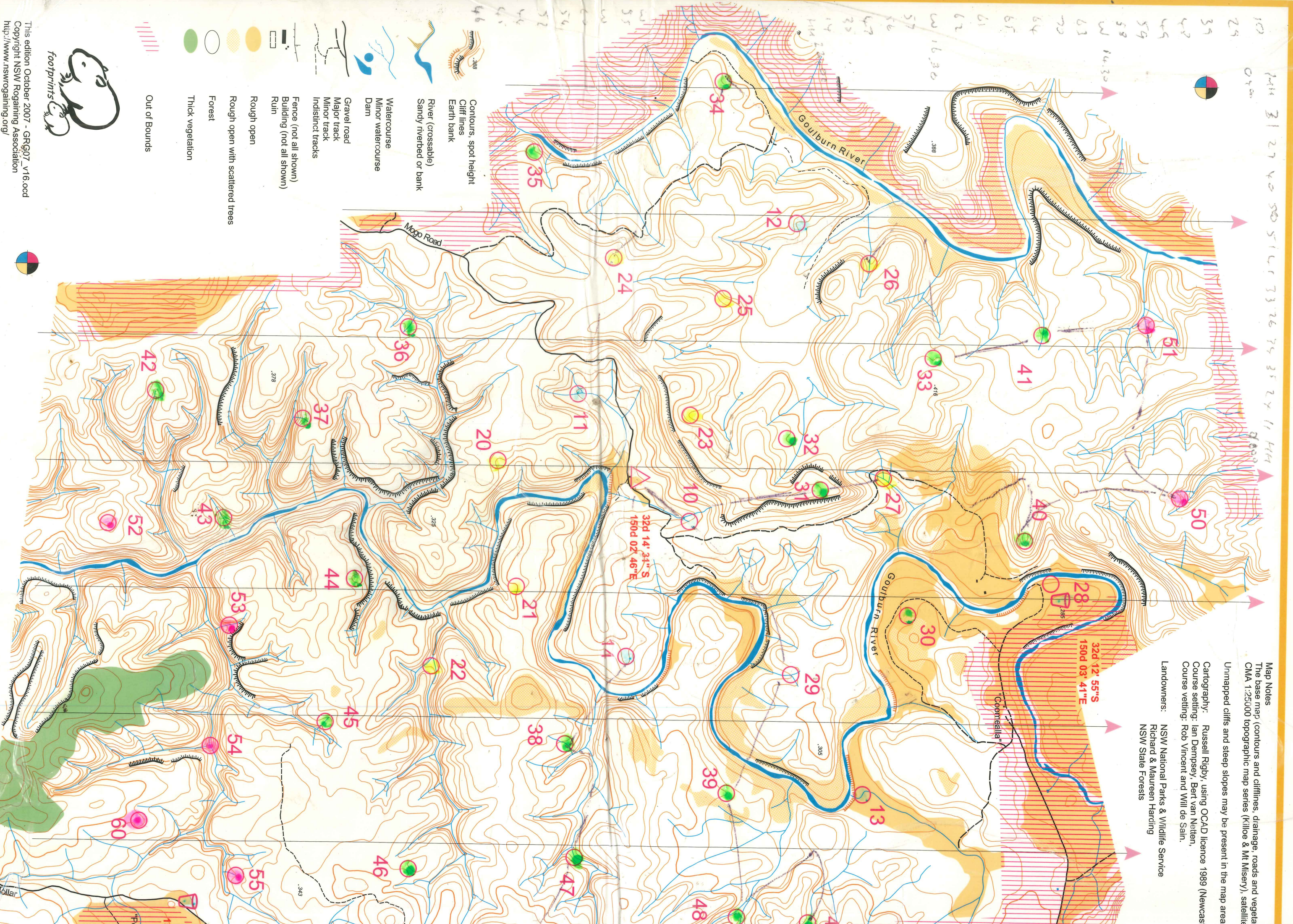
Latitude/longitude (GDA94) for the hash house and water drops are posted on the map near those sites for amaranthv use only

Map Notes
 The base map (contours and clifflines, drainage, roads and vegetation) is from the CMA 1:25000 topographic map series (Killoe & Mt Misery), satellite imagery and aerial photography.

Unmapped cliffs and steep slopes may be present in the map area.

Cartography: Russell Rigby, using OCAD licence 1989 (Newcas)
 Course setting: Ian Dempsey, Bert van Nellen,
 Course vetting: Rob Vincent and Will de Sain.

Landowners: NSW National Parks & Wildlife Service
 Richard & Maureen Harding
 NSW State Forests



- Contours, spot height
- Cliff lines
- Earth bank
- River (crossable)
- Sandy riverbed or bank
- Watercourse
- Minor watercourse
- Dam
- Gravel road
- Major track
- Minor track
- Indistinct tracks
- Fence (not all shown)
- Building (not all shown)
- Ruin
- Rough open
- Rough open with scattered trees
- Forest
- Thick vegetation
- Out of Bounds



footprints

