

Course setting/vetting:  
 Bert VanNetten  
 Ian Dempsey

Administration:  
 David Coysh  
 Alan Mansfield

Catering:  
 Olinda Community  
 Association

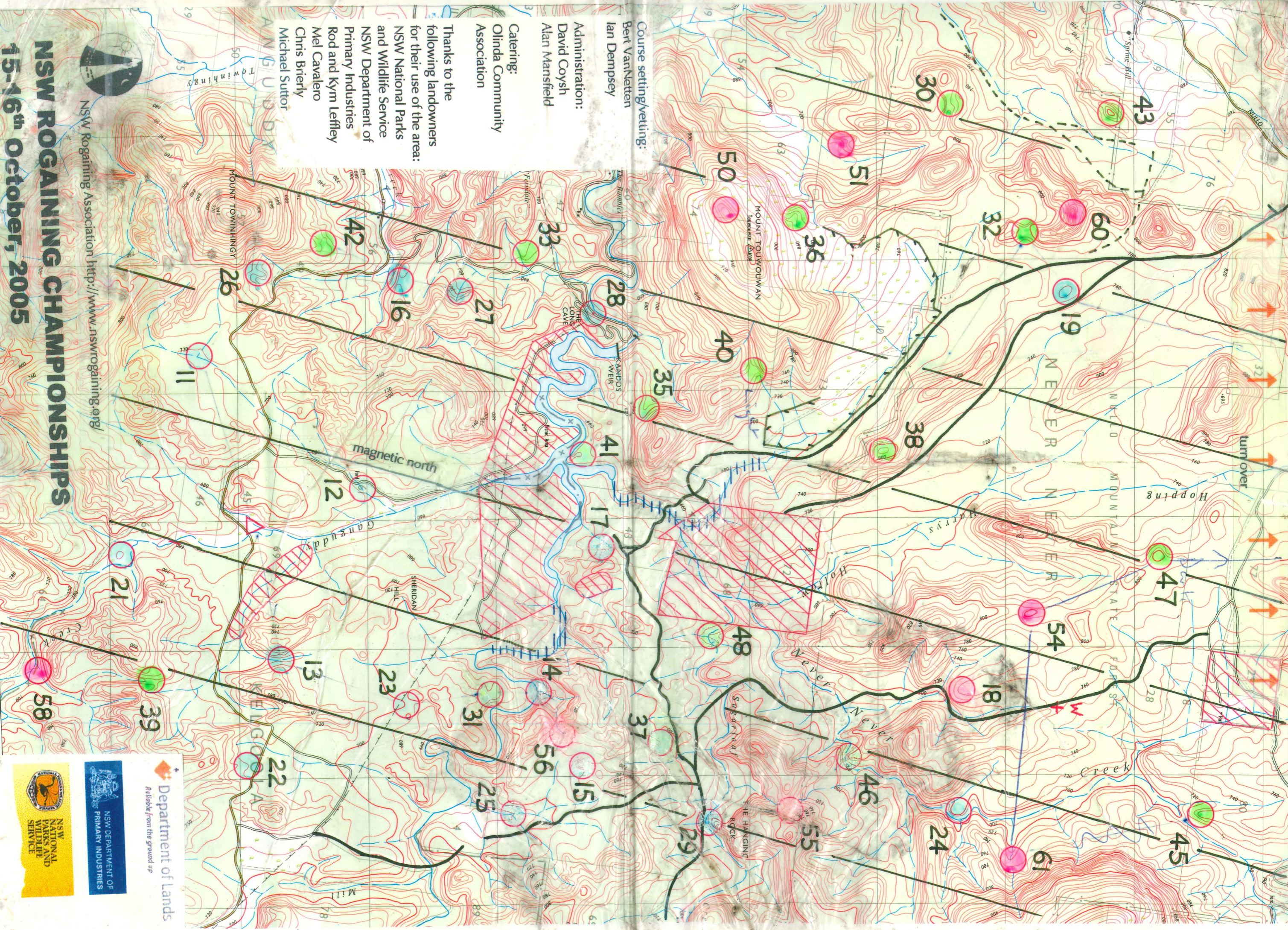
Thanks to the  
 following landowners  
 for their use of the area:  
 NSW National Parks  
 and Wildlife Service  
 NSW Department of  
 Primary Industries  
 Rod and Kym Lefley  
 Mel Cavaleiro  
 Chris Brierly  
 Michael Sutor



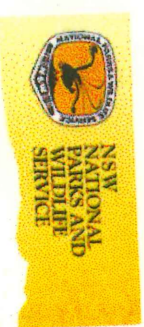
NSW Rogaining Association <http://www.nswrogaining.org/>

# NSW ROGAINING CHAMPIONSHIPS

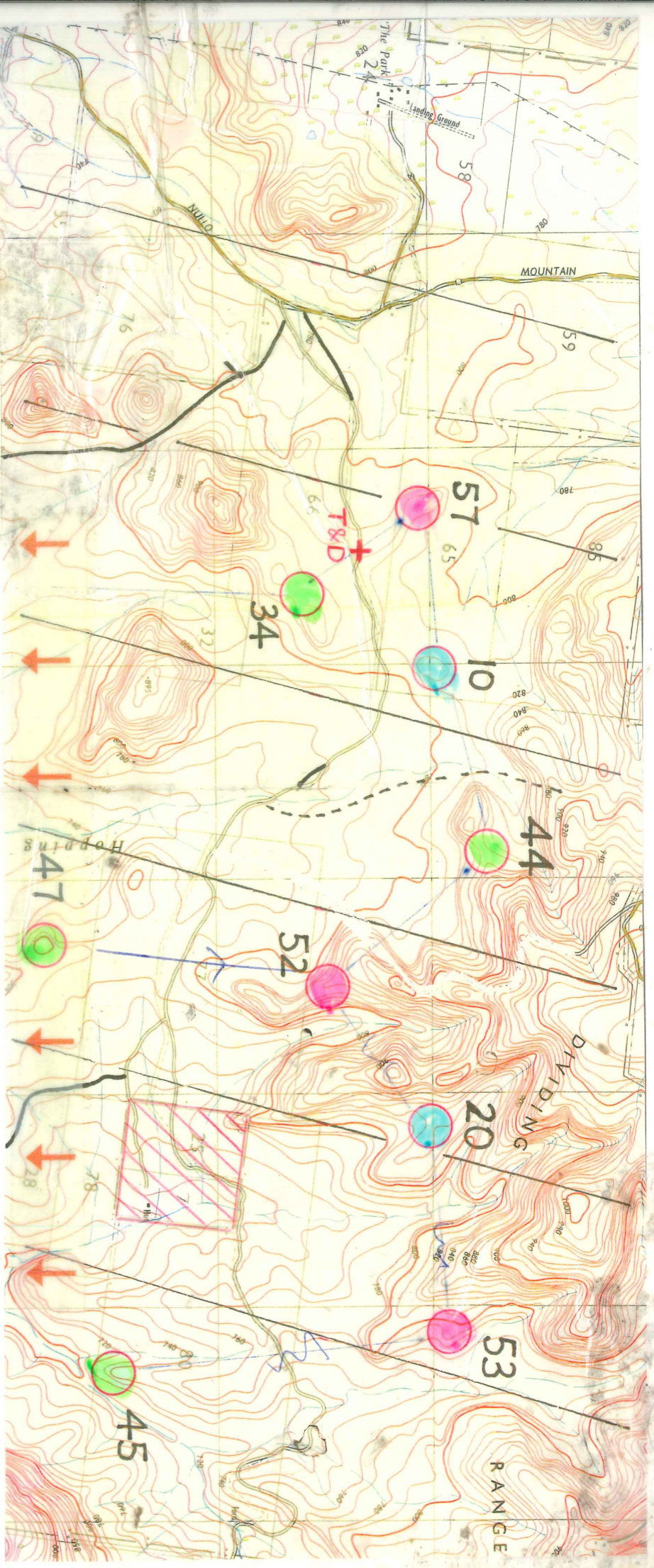
## 15-16th October, 2005



Department of Lands  
 Reliable from the ground up







2005 NSW ROGAING CHAMPIONSHIPS CHECKPOINTS

10	The knoll
11	The watercourse junction
12	The watercourse, south-east bank, 50 metres from road
13	The watercourse
14	The watercourse junction
15	The knoll, attack from the north
16	The saddle
17	The spur, on a pagoda, south-west foot
18	The ridge, south end
19	The knoll
20	The saddle
21	The rocky knoll
22	The spur
23	The spur, north of the powerline
24	A knoll, southern foot of a 5 metre pagoda
25	The watercourse junction
26	The spur
27	The watercourse
28	The Long Cave, 20metres north from north end of cave
29	The watercourse junction
30	The saddle
31	A saddle
32	The saddle
33	The spur
34	The saddle, north base of a pagoda
35	The gully
36	The terrace
37	The spur
38	The knoll
39	The saddle
40	The saddle, difficult to attack from the north-west
41	The knoll, north end at the base of a 4 metre cliff
42	The gully head
43	The knoll
44	A saddle
45	The spur
46	The watercourse bend
47	The knoll
48	The watercourse junction
50	The knoll, south-west end
51	The gully
52	The spur
53	A knoll
54	The knoll
55	A spur, east of the rocky saddle
56	A rocky gully, 50 metres south-east of the watercourse
57	A knoll
58	A large clearing, east part
60	The knoll, west end. A challenging checkpoint – for daytime only
61	The watercourse

Built-up area with main roads : National route number

Road sealed surface two or more lanes :

Road sealed surface one lane : Drawbridge : Causeway

Road loose surface two or more lanes : Bridge : Mile post

Road loose surface one lane : Embankment : Cutting

Track vehicular, unimproved earth : Gate : Cattle Grid

Track, foot or bridle

Railway multiple track : Station : Tunnel

Railway single track : Turntable : Siding or loop

Light railway or tramway

Power transmission line These services are connected to most dwellings on this map.

Telephone line

Levee or dyke: Quarry or gravel pit

Building: School: Post Office: Police Station: Church

Windpump: Mine

Horizontal control point (with height): Landmark: Other

Benchmark mark (with height): Spot height approximate

Mud: Sand

Landmark boulder: Rocky pinnacle: Cave

Contours: Approximate contours

Depression contours: Auxiliary contour

Landmark area (landslide: rocky ground)

Ciffs, Inland: Coastal

Eroded bank (with relative height)

Dense timber: Medium timber

Scattered timber: Forest: coniferous or pine

Orchard or Plantation: Vineyard

Hangrove: Scrub

Marsh or Swamp: Land subject to inundation

Dam or tank: Well or bore: Spring: Lake perennial

River or stream perennial: Intermittent

Dam or weir: Rapids in large river

Stream or watercourse indefinite

Falls: Rapids in small river: Braided river

Lake intermittent: Lake dry

Irrigation canal: Drain

out of bounds

