

# THE GA STONE

1995 NSW Rog  
Capertee NSW

Map reproduced by a  
Land Informa

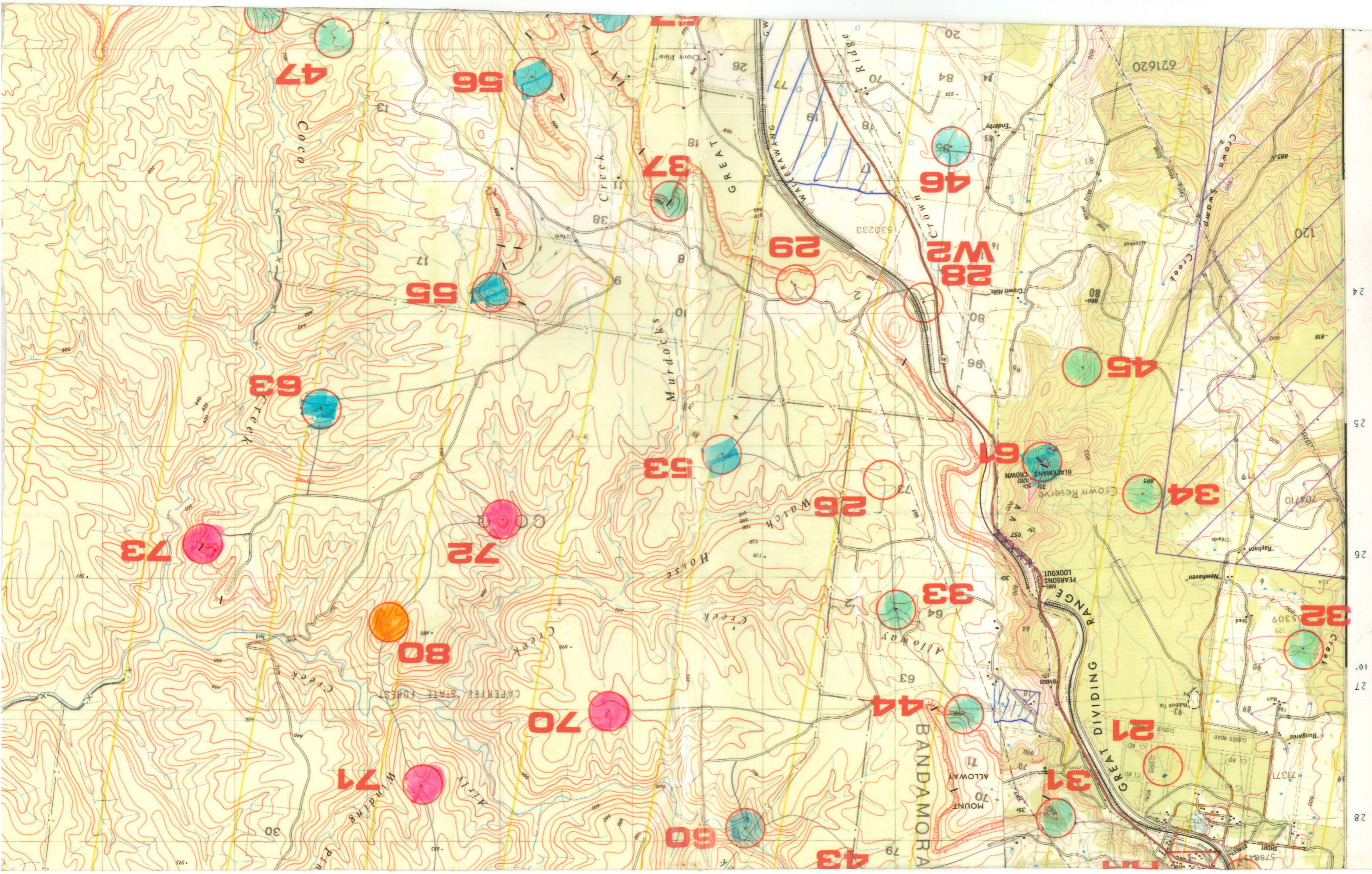
SCALI  
CONTOUR  
YELLOW LINES SH  
GRID SQ

For key to symb

### \* KEY TO CONSTITUENT

1	2
3	4

- 1. Upper T
- 2. Glen Ali
- 3. Caperte
- 4. Ben Bu





No.	GRIDREF FEATURE	LOCATION OF FLAG	INTENTION SCENIC SHEET RATING		NOTES / CAUTIONS
			SHEET	RATING	
20	180284 The Royal Hotel, Capentree	In the front bar (open Sat/Sun 10am - 2 am)			Points: The value of each checkpoint is 10 times the first digit of the checkpoint number. Total points on course = 2400. Penalty for late return is 10 pts per minute. "The" feature means one that is shown on the map. "A" feature means one that is not shown (but is there on the ground). Where the location of the flag is given as an offset (Xm @ Y°) the flag can be found by following that bearing for that distance from the feature described. The dot and circle on the map show the feature, not the exact flag location.
21	185276 The (fndistinct) watercourse	100m S of track. NOTE: CHICLE IS OFF CENTRE			
22	195310 Between the watercourses	Foot of the spur	•		
23	186318 The knoll	20m @ 220°			
24	206318 The gully	On a poplar tree			
25	217305 A dam	E side			
26	211252 The spur	On a 20m eucalyptus	•		
27	248327 The gully	Check the beautiful gratto below flag	•	★★	
28	207238 The fence corner			★	
29	217237 The gully	Between two 5m boulders		★	
30	190288 The dam	Below / E side			
31	194278 The spur			★	
32	174267 The watercourse bend	Foot of a rocky spur			
33	210262 Alloway Creek, the bend	N bank		★	
34	186254 The gully, upper part				
35	237305 The spur		•		
36	252291 The spur		•		
37	227231 The cliff-line, N tip, top	Near the top of the ramp		★ ☆	
38	195201 The knoll		•	★ ☆	
39	232207 Foot of the spur		•		
40	188298 A knoll	Opposite the middle gully junction		•	
41	204298 The spur	Top		★	
42	214295 A gully junction	On a fallen dead tree			
43	211284 The watercourse bend		•		
44	205270 The cliff bend, foot	On a native cherry tree		★	
45	190244 The spur			★	
46	204227 The gully, upper part	On an isolated tree		★	
47	252219 Head of the gully				
48	257217 The waterfall, 6m	Below			
50	207289 The minor watercourse	At the foot of a rocky spur, 50m above the main watercourse			
51	231294 The spur				
52	240291 The gully	On a fallen tree			
53	223250 The gully				
54	242322 The mine entrance		•	★	
55	240238 The summit		•	★	
56	237222 The gully				
57	232217 Head of the gully				
60	221279 Airly Creek, between the 2 bends	E bank, at the foot of a 6m cliff			
61	193251 Blackmans Crown, S end, top	W side		★★	
62	190329 A knoll	50m @ 310°, beneath a grand old pine		★★	
63	253247 The gully, upper part			★	
64	249208 The spur	Above the cliff-line			
65	210181 Side of the spur	On an isolated tree			
70	231270 The gully, upper part				
71	246275 The spur		•		
72	239255 The spur				
73	262257 The (flat) spur above the cliff	A group of 3 native pines		★ ☆	
74	173205 The saddle	On an isolated tree		★	
80	248263 The (rocky) knoll	On the highest point		★★	
81	251312 The spur	On a 2m knoll, NW side		★★	
82	239190 The saddle ridge			★★	
90	269284 The gully				
100	187187 Jews Mountain trig			★★★	
W1	242297 A (5-way) track junction		•	Keep clear of quarries in this area	
W2	207238 At checkpoint 28		•	No points, just water	
W3	241248 The road junction	20m @ 0°	•	Hot drinks 6.00 pm - 6.00 am	
			•	No points, just water	