

"The Stargazer's Rogaine"

13-14 October 2006

7th World Rogaining Championships

Warrumbungle Mtns NSW Australia

Acknowledgments:

Landowners / managers

Traditional owners, the Gamilaroi People
National Parks and Wildlife Service, John Thring, Peter & Michelle Turnbull, John Strickland,
John & Jackie Johnston, Rod McCallum, Tony & Patty Webb

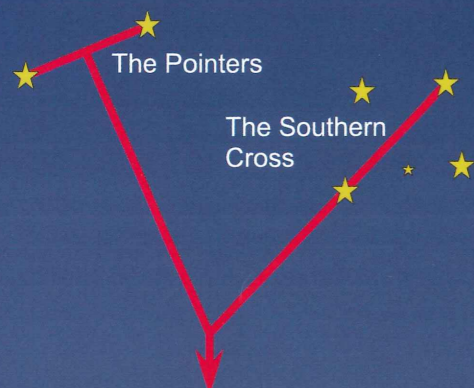
Map: Copyright NSW Rogaining Association

Photogrammetry and base map: Chris Wilmott
Cartography: Mike Hotchkis and Chris Waring

Course:

Course setters: Mike Hotchkis, Trevor Gollan, Chris Waring, Dave Griffith
Vetters: Tony Maloney, Julian Ledger, John and Mardi Barnes
Event Co-ordinator: Alan Mansfield; Administrator: Ian Almond

Navigation by the Stars



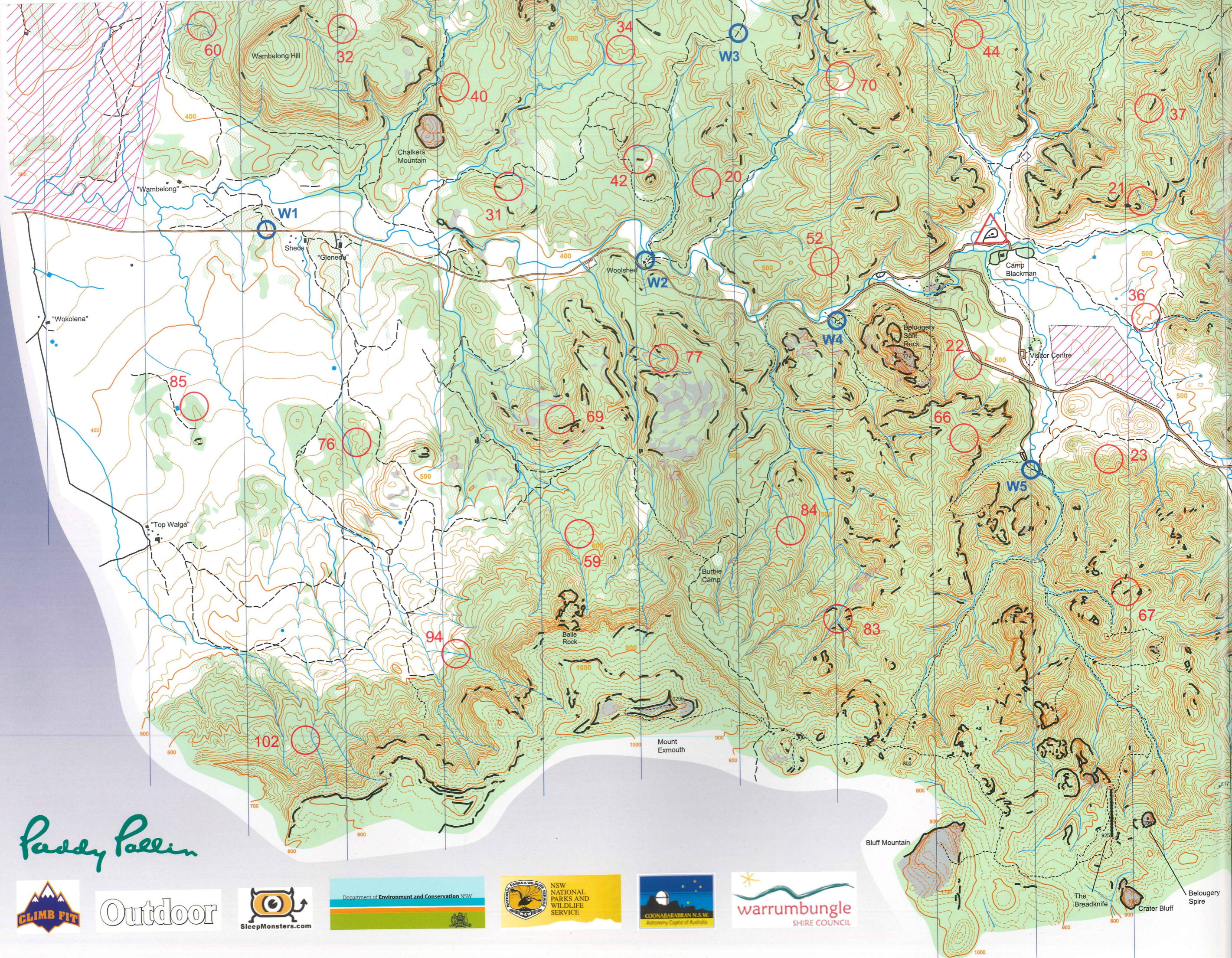
Scale 1 : 33,333



Magnetic North

Contour interval 10m





Paddy Pallin



Outdoor



Bluff Mountain

The Breadknife

Crater Bluff

Belouery Spire



Hosted by
NSW Rogaining Association
<http://www.nswrogaining.org/>
<http://www.rogaine2006.com.au/>

for the
International Rogaining Federation
<http://www.rogaining.com/>

Legend

- Contours [Interval 10m]
- Index Contours [100m]
- 20m contours [S & E map edges]
- Spot-height
- Creek, watercourse
- Pond or farm dam
- Impassable cliff
- Bare rock [may have vegetation]
- Forest
- Semi open land
- Open land, some trees
- Main road
- Minor road
- Vehicle track
- Footpath
- High fence
- Buildings
- Tower
- Out of bounds area
- Water point W3
- Hash house
- Checkpoint 36
- First aid station

zer's Rogaine" 13-14 October 2006

Rogaining Championships Blue Mtns NSW Australia

Strickland,

