

Wingello

Welcome to the 43rd

Paddy Pallin

Rogaine
18th June 2006

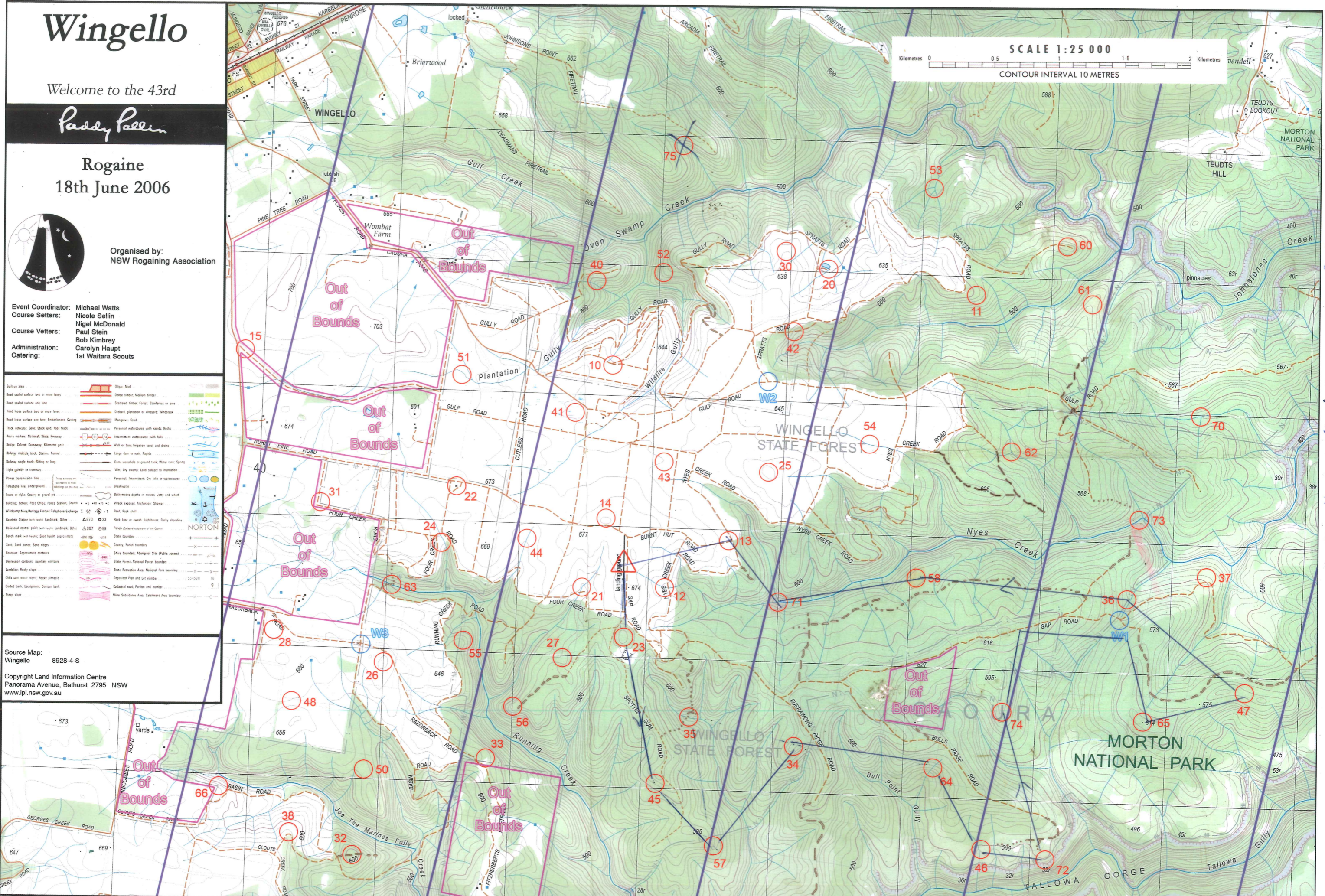
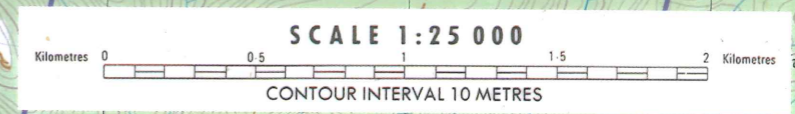


Organised by:
NSW Rogaining Association

Event Coordinator: Michael Watts
Course Setters: Nicole Sellin, Nigel McDonald
Course Veters: Paul Stein, Bob Kimbrey
Administration: Carolyn Haupt
Catering: 1st Waitara Scouts

Built-up area	Edgic, Mud
Road sealed surface two or more lanes	Dense timber, Medium timber
Road sealed surface one lane	Scattered timber, Forest, Coniferous or pine
Road loose surface two or more lanes	Unfurfed plantation or vineyard, Wetbreak
Road loose surface one lane, Embankment, Cutting	Mangrove, Scrub
Track vehicular, Gate, Stock grid, Fast track	Perennial watercourse with rapids, Rocks
Rock markers: National, State, Freeway	Intermittent watercourse with falls
Bridge, Culvert, Causeway, Milestone post	Wall or bone ingestion canal and drain
Railway multiple track, Station, Tunnel	Large dam or weir, Rapids
Railway single track, Siding or loop	Dam, waterhole or ground tank, Water tank, Spring
Light railway or tramway	Wet, Dry swamp, Land subject to inundation
Power transmission line	Perennial, Intermittent, Dry lake or watercourse
Telephone line, Underground	Breakwater
Levee or dike, Quay or gravel pit	Bathymetric depths in metres, Jetty and wharf
Building, School, Post Office, Police Station, Church	Wreck exposed, Anchorage, Shipway
Windmill, Mine, Heritage Feature, Telephone Exchange	Reef, Rock shelf
Geodetic Station (with height), Landmark, Other	Rock bare or scree, Lighthouse, Rocky shoreline
Horizontal control point (with height), Landmark, Other	Parish (where subdivision of the Crown)
Bench mark (with height), Spot height (approximate)	State boundary
Sand, Sand dunes, Sand ridges	County, Parish boundary
Contours, Approximate contours	Shire boundary, Aboriginal Site (Public access)
Depression contours, Auxiliary contours	State Forest, National Forest boundary
Landslide, Rocky slope	State Recreation Area, National Park boundary
Cliffs (with various heights), Rocky outcrop	Deposited Plan and Lot number
Enslaved bank, Equipment, Contour bank	Cadastral road, Postcode and number
Steep slope	Mine Subsurface Area, Catchment Area boundary

Source Map:
Wingello 8928-4-S
Copyright Land Information Centre
Panorama Avenue, Bathurst 2795 NSW
www.lpi.nsw.gov.au



COURSE SETTERS NOTES AND CHECKPOINT DESCRIPTIONS

Timetable	8.15 am Novice Briefing	8.45 am ALL TEAMS Briefing	9.00 am START	3.00 pm FINISH
Safety	<ul style="list-style-type: none"> There are cliffs and boulders of numerous sizes, including near some checkpoints. Be cautious. The course setters did not need to do any climbing and neither should you. There are easy passes to either side or end that you should move towards. All teams must complete a route intentions sheet and return it to Admin before the final briefing. There is a 100 point penalty for teams which do not complete and hand in route intentions sheets. You must be carrying a minimum emergency kit of a whistle, a space blanket, and an elastic bandage for the remedial treatment of a snake bite. The area is used extensively by dirt bikes and 4WD vehicles. Many of them will not expect to see walkers so please be aware. 			
At the Finish	<ul style="list-style-type: none"> Control cards are used for scoring and recording each team's safe return. You MUST NOT leave without handing in your control card or notifying Admin. On return to the hash house when you finish, Admin will check that all team members are present and record your finish time. Once you have received your finish time, please add up your score and return your card to Admin. Plan your return well – late teams are penalized 10 pts for every minute, and disqualified after 3.30 pm (when searches may commence). 			
Emergency	<ul style="list-style-type: none"> Blow your whistle. Teams hearing a whistle are obliged to stop competing and go to the assistance of the team in trouble. Allowances are made in scoring. If you are mobile, try to get to a main track, particularly on way to a water drop. Phone reception is limited, but you may try calling 0405 514 045. Please call 000 (or try 112 if no reception is showing) as a last resort. Instruct services to go to the landing ground in Wingello State Forest from where they will be guided. 			
Wildlife	<ul style="list-style-type: none"> There is abundant wildlife, mostly active around dusk and dawn, including wombats, black cockatoos, snakes, crimson rosella, wallabies and lyrebirds. Beware driving home. There is a wombat release centre west of Checkpoint 40. The wombats may be active and aggressive. Do not try to outrun them if they are agro. Stop and make rapid noises, like sharp fast clapping. 			

Scoring	<ul style="list-style-type: none"> The score for each control is its number with a zero in the last character. ie. controls numbered 50, 51, 52, and 53 are each worth 50 points. Points have been allocated to each checkpoint based on a combination of navigation and fitness required, and the vibe of the thing at each checkpoint
Terrain	<ul style="list-style-type: none"> The map has 10m contours. The scale is shown on the map. There are numerous cliffs and boulders on the course. The vegetation varies greatly over the course and there are no clear rules for where terrain or vegetation will be hard going. Checkpoints have been set to try and minimize hard going for most route choices. Pine plantations and cleared areas are shown the same. Nyes Creek is difficult to cross in many places. Checkpoints 71 and 73 are placed at suggested crossing points of Nyes Creek.
Map	<ul style="list-style-type: none"> The base map is recent; however there are still a number of errors, particularly for tracks. Numerous forestry roads have been added or rehabilitated. Some creeks are not shown on the map, others shouldn't be, and some are shown incorrectly. Map corrections may not be accurate or comprehensive and give a general representation only. Check your navigation against the terrain.
Water	<ul style="list-style-type: none"> There are three water drops. These are blue circles marked W1, W2 and W3.
Finding Controls	<ul style="list-style-type: none"> Control circles have their centre at the control location. The control number is besides the circle and relates to points and the control description, possibly including navigation from a nearby feature. Asterisks beside a control number and in the Control Descriptions table refer to controls which get a specific mention in these notes.
Route Choice	<ul style="list-style-type: none"> There are a number of out of bounds clearly marked. Enter them and you may either get disqualified, trampled by a bull, or electrocuted (it's a lucky dip). 20 – There is thick scrub around the dam. Access in is best via the track from the west. 64 – Heavy scrub along the creek to the south. Best access from trail. 71 – A cliff across the creek to the south. Follow this cliffline either way for a break in the cliff. Access is OK between the creek to the east and the marked trail. There is a rock formation to the NW of 71 that needs to be worked around. 73 – A passage from the trail to the south and creek to the north has been marked by coloured tape on trees.

Checkpoint No.	Description	Points
10	20 m S of trail junction	10
11	Spur	10
12	Creek	10
13	10 m W of trail junction	10
14	Knoll	10
15	30 m E of road junction	10
20*	Dam jetty	20
21	Creek junction	20
22	Abandoned driveway	20
23	Knoll	20
24	South edge of clearing	20
25	Knoll	20
26	Knoll	20
27	Gully	20
28	Tree	20
30	Spur	30
31	30 metres NE of trail bend	30
32	Knoll	30
33	50 m NE of gate	30
34	Knoll	30
35	Creek and track junction	30
36	150 m N of saddle	30
37	Spur, 20 m N of track bend	30
38	Spur, 10m N of track bend	30
40	50 m S of saddle	40
41	East side of clearing	40
42	Gully	40
43	150m @ 220 degrees from trail junction	40
44	Gully	40
45	Spur	40
46	Centre of clearing	40
47	Saddle	40
48	Saddle	40
50	Saddle	50
51	Creek	50
52	Spur	50
53	Creek junction	50
54	E side semi cleared area	50
55	Spur	50
56	50m W of trail end - CAUTION (cliff)	50
57	Spur	50
58	Broad knoll	50
60	Boulders on knoll	60
61	Spur	60
62	Creek junction	60
63	Creek and track Junction	60
64*	Gully	60
65	Ridge	60
66	Fence Corner	60
70	Creek junction	70
71*	Creek junction	70
72	Cliff (top) - CAUTION	70
73*	Creek	70
74	Spur	70
75	Gully	70