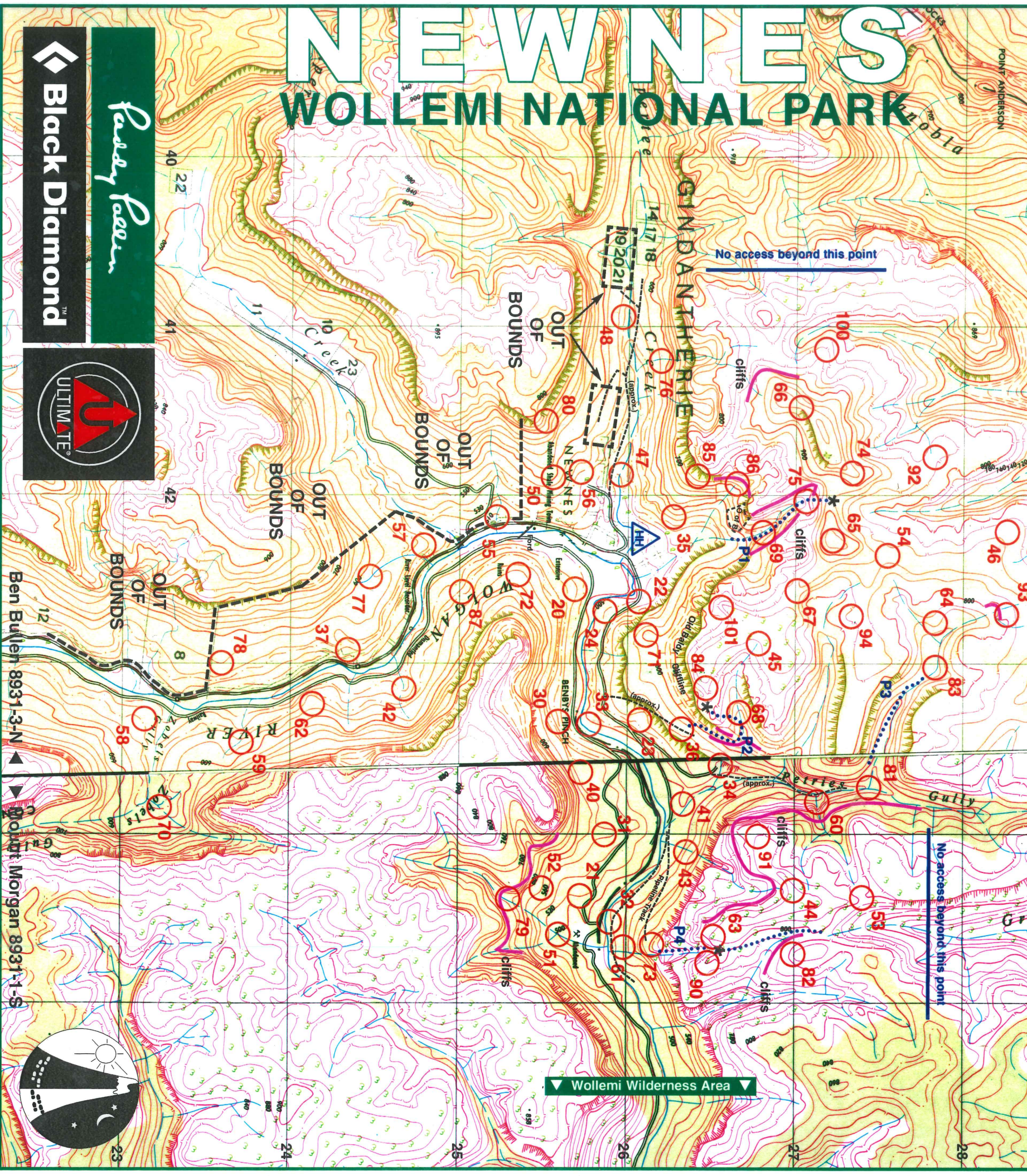


The 39th Fairy Faer Winter 6 hour

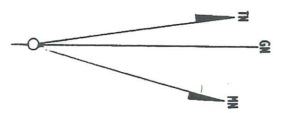
ROOGAINE

Sunday 16th June 2002

Event Coordinator: Andy Mein
 Course Setter: Andrew Pope
 Course Vettors: Phil Holman / John Barnes
 Administration: Belinda Pope
 Hash House: 1st Waitara Scouts



Source: © LAND AND PROPERTY INFORMATION, PANORAMA AVENUE, BATHURST NSW 2795 www.lpi.nsw.gov.au



NOTE:
 To convert
 grid bearings to
 magnetic bearings
 subtract 12°

- Build-up area with main roads
- Road sealed surface two or more lanes
- Road sealed surface one lane
- Road loose surface two or more lanes
- Road loose surface one lane; Embankment; Cutting
- Track vehicular; Gate; Stocked; Foot track
- Route markers: National; State; Freeway
- Bridge: Causeway; Kilometre post
- Railway multiple track; Station; Tunnel
- Railway single track; Siding or loop
- Light railway or tramway
- Power transmission line
- Telephone line; Underground

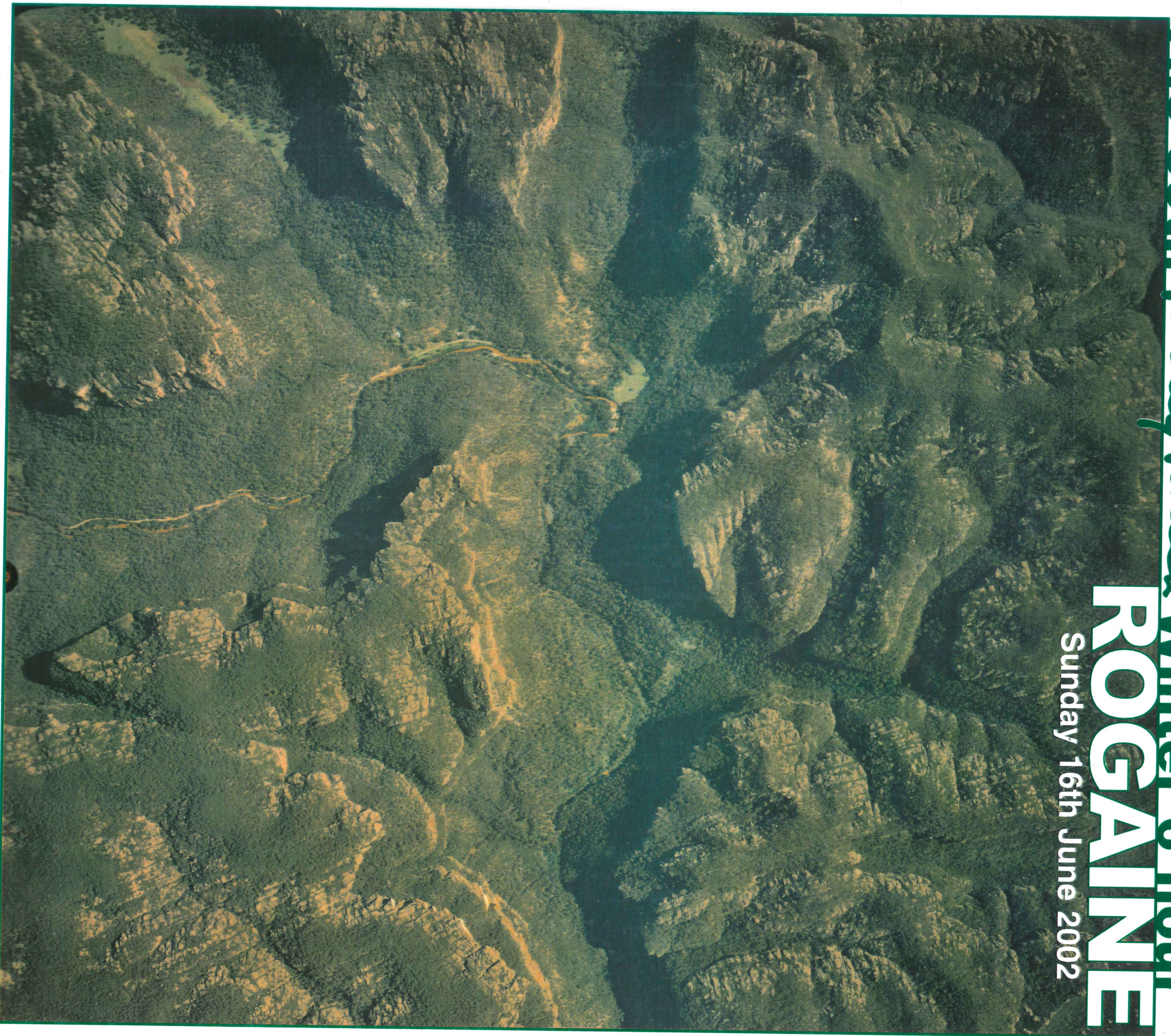
- Levee or dyke; Quarry or gravel pit
- Building; School; Post Office; Police Station; Church
- Windpump; Mine
- Horizontal control point (with height); Landmark; Other
- Beach mark (with height); Spot height approximate
- Historical feature
- Islet; Rocky pinnacle; Sand
- Contours: Approximate contours
- Depression contours; Auxiliary contour
- Landslide; Rocky slope
- Cliffs (with relative height)
- Flooded bank; Escarpment
- Slope slope

- Dense timber; Medium timber
- Scattered timber; Forest; coniferous or pine
- Orchard or plantation; Vineyard
- Mangrove; Scrub
- Marsh or swamp; Land subject to inundation
- Small dam; waterhole or tank; Well or bore; Spring
- Intermittent watercourse with falls
- Dam or weir; Rapids in large river
- Indefinite intermittent watercourse
- Perennial watercourse with rapids
- Intermittent lake; Dry lake
- Irrigation canal and drain
- Indefinite perennial watercourse



SCALE 1:25000

CONTOUR INTERVAL 20 METRES



The 39th Passay Passer

Winter 6 hour

ROOGAINE

Sunday 16th June 2002

Wolllemi National Park

NEEWANES