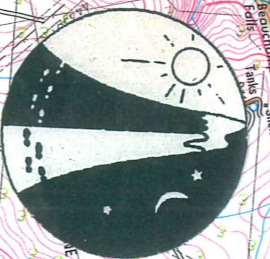


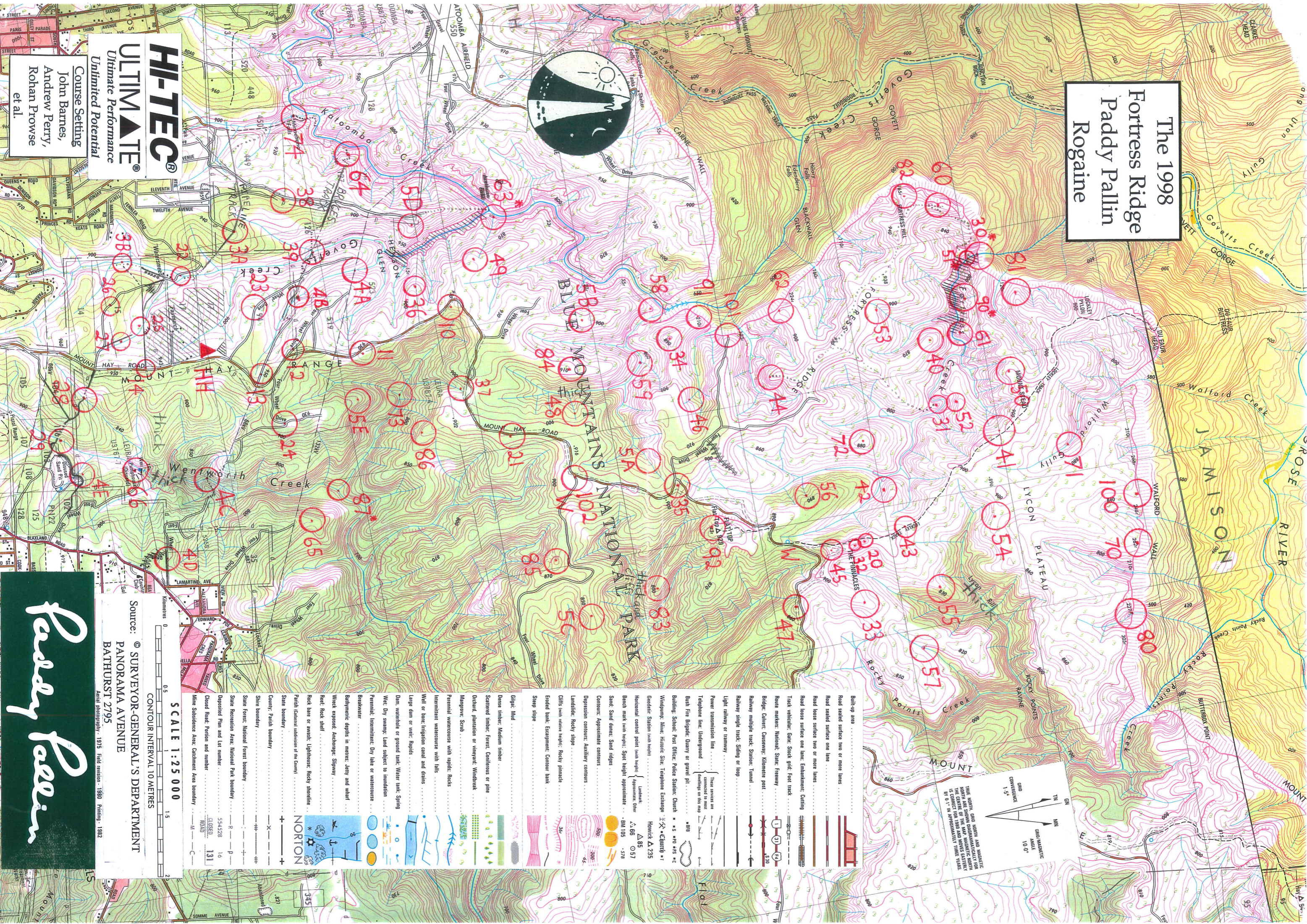
The 1998
Fortress Ridge
Paddy Pallin
Rogaine



HI-TEC
ULTIMATE
Ultimate Performance
Unlimited Potential

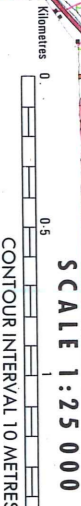
Course Setting
John Barnes,
Andrew Perry,
Rohan Prowse
et al.

Paddy Pallin



Source: © SURVEYOR-GENERAL'S DEPARTMENT
PANORAMA AVENUE
BATHURST 2795

Aerial photography: 1979. Field revision: 1980. Printing: 1982



Build-up area	
Road sealed surface two or more lanes	
Road sealed surface one lane	
Road loose surface one lane; Embankment; Cutting	
Track markers: Gate, Stock grid, Foot track	
Route markers: National, State, Freeway	
Bridge: Culvert; Causeway; Kilometer post	
Railway multiple track; Station; Tunnel	
Railway single track; Stiding or loop	
Light railway or tramway	
Power transmission line	
Telephone line; Underground	
Bush Fire Brigade; Quarry or gravel pit	
Building; School; Post Office; Police Station; Church	
Windgump; Mine; Historic Site; Telephone Exchange	
Generator; Station (with height)	
Horizontal control point (with height)	
Bench mark (with height); Spot height approximate	
Sand; Sand dunes; Sand ridges	
Contours: Approximate contours	
Depression contours; Auxiliary contours	
Landslide; Rocky slope	
Climb (with relative height); Rocky pinnacle	
Forded bank; Equipment; Cannon bank	
Sleep slope	
Grigit; Mud	
Dense timber; Medium timber	
Scattered timber; Forest; Contours or pine	
Ditched; plantation or vineyard; Windbreak	
Mangrove; Scrub	
Perennial watercourses with rapids; Rocks	
Intermittent watercourses with falls	
Well or bore; Irrigation canal and drains	
Large dam or weir; Rapids	
Dam, waterhole or ground tank; Water tank; Spring	
Wet; Dry swamp; Land subject to inundation	
Perennial; Intermittent; Dry lake or watercourse	
Breakwater	
Bathymetric depths in metres; Jetty and wharf	
Wreck exposed; Anchorage; Slipway	
Reef; Rock shelf	
Rock bare or smooth; Lighthouse; Rocky shoreline	
Partial (partial subdivision of the country)	
State boundary	
County; Parish boundary	
State boundary	
State Forest; National Forest boundary	
State Recreation Area; National Park boundary	
Designated Fire and Let number	
Closed Road; Portion and number	
Mine Subsidence Area; Catchment Area boundary	
ROAD	
NORTON	

