

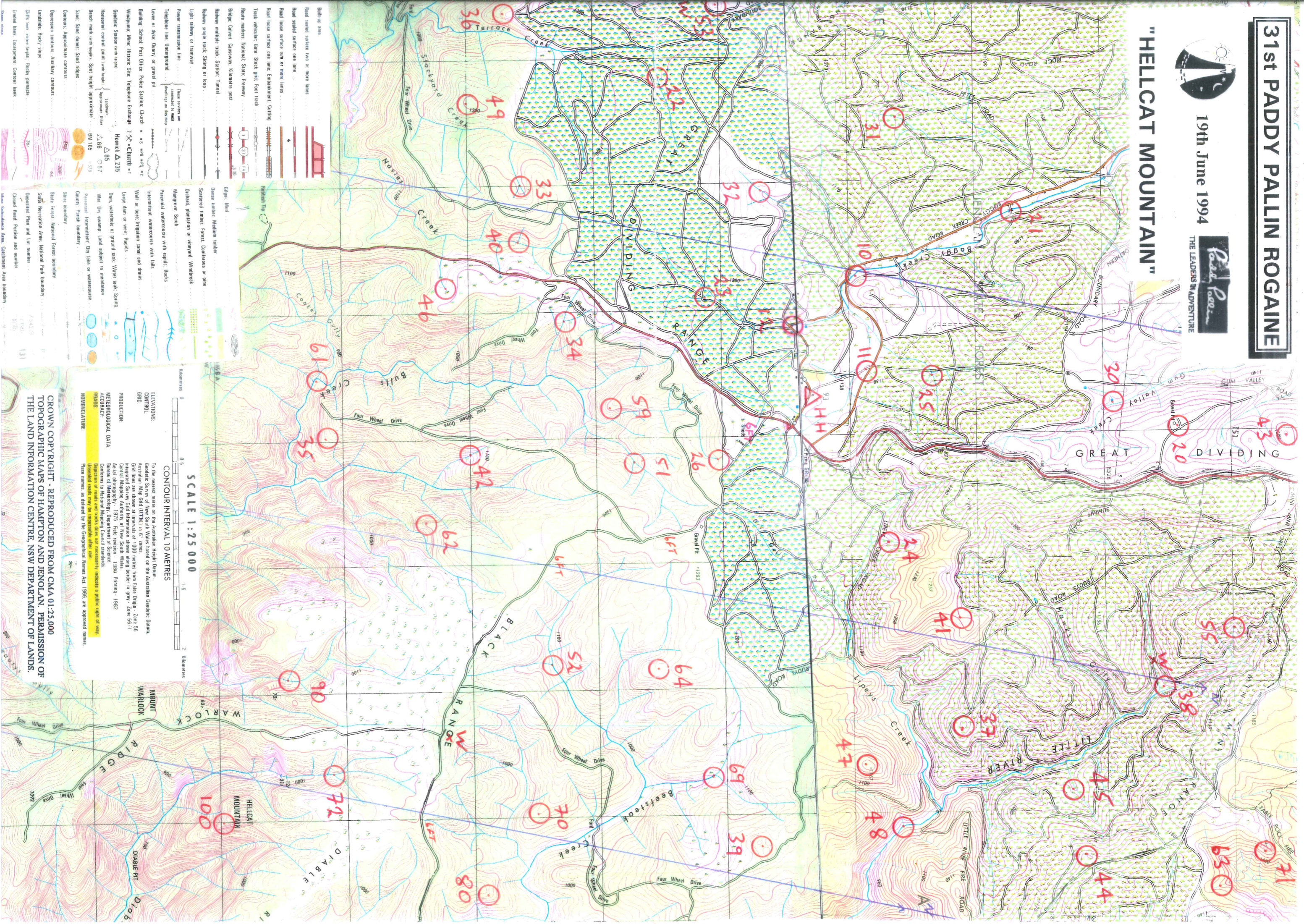
# 31st PADDY PALLIN ROGAINE



19th June 1994

THE LEADERS' ADVENTURE

## "HELLCAT MOUNTAIN"



- Build up area
- Road sealed surface two or more lanes
- Road sealed surface one lane
- Road loose surface two or more lanes
- Road loose surface one lane
- Track vehicle: Gate, Stock grid, Foot track
- Road markers: National, State, Freeway
- Bridge: Culvert, Cassway, Kilometer post
- Railway multiple track, Station, Tunnel
- Railway single track, Siding or loop
- Light railway or tramway
- Power transmission line
- Telephone line, Underground
- Lane or dike: Quarry or gravel pit
- Building: School, Post Office, Police Station, Church
- Windmill: Mill, Watermill, Silt, Telephone Exchange
- Homestead control point (with height)
- Homestead control point (with height)
- Spot height approximate
- Spot height approximate
- Spot height approximate
- Contour: Approximate contours
- Depression contours: Auxiliary contours
- Landslide: Rock, slope
- Cliff: Near river height, Rocky gullies
- Cliffed bank, Escarpment, Contour bank

- Graben: Mead
- Dense timber: Medium number
- Scattered timber: Forest, Continuous or pine
- Orchard, plantation or vineyard, Windbreak
- Measure: Scab
- Perennial watercourse with rapids, Rocks
- Intermittent watercourse with falls
- Well or bore, Irrigation canal and drains
- Large dam or weir: Rapids
- Dam, waterhole or ground tank, Water tank, Spring
- Wet, Dry swamp, Land subject to inundation
- Perennial: Intermittent, Dry lake or watercourse
- Country: Parish boundary
- Shire boundary
- State Forest, National Forest boundary
- State Recreation Area, National Park boundary
- Deposited Plan and Lot number
- Cliffed Road, Partition and number

Scale 1:25 000

CONTOUR INTERVAL 10 METRES

ELEVATIONS: CONTROL GRID

PRODUCTION: METEOROLOGICAL DATA

ACQUIRY: METEOROLOGICAL DATA

MONUMENTATION: METEOROLOGICAL DATA

MONUMENTATION: METEOROLOGICAL DATA

CROWN COPYRIGHT - REPRODUCED FROM CMA 01:25,000 TOPOGRAPHIC MAPS OF HAMPTON AND JENOLAN. PERMISSION OF THE LAND INFORMATION CENTRE, NSW DEPARTMENT OF LANDS.