

Wombeyan Wamble

Spring Rogaine

6th/7th October 2012

24 hour / 15 in 24 hour

Setters / Veters / Hangers: Jason Tsui, Jess Baker, Gill Fowler,
Julian Ledger, Gareth Denyer, Marcin Kozik, Dale Thompson,
Ian Dempsey, Samantha Howe, John Clancy, David Stone,
Phil Whitten, Belinda Whitten, Vince, Michael Watts.

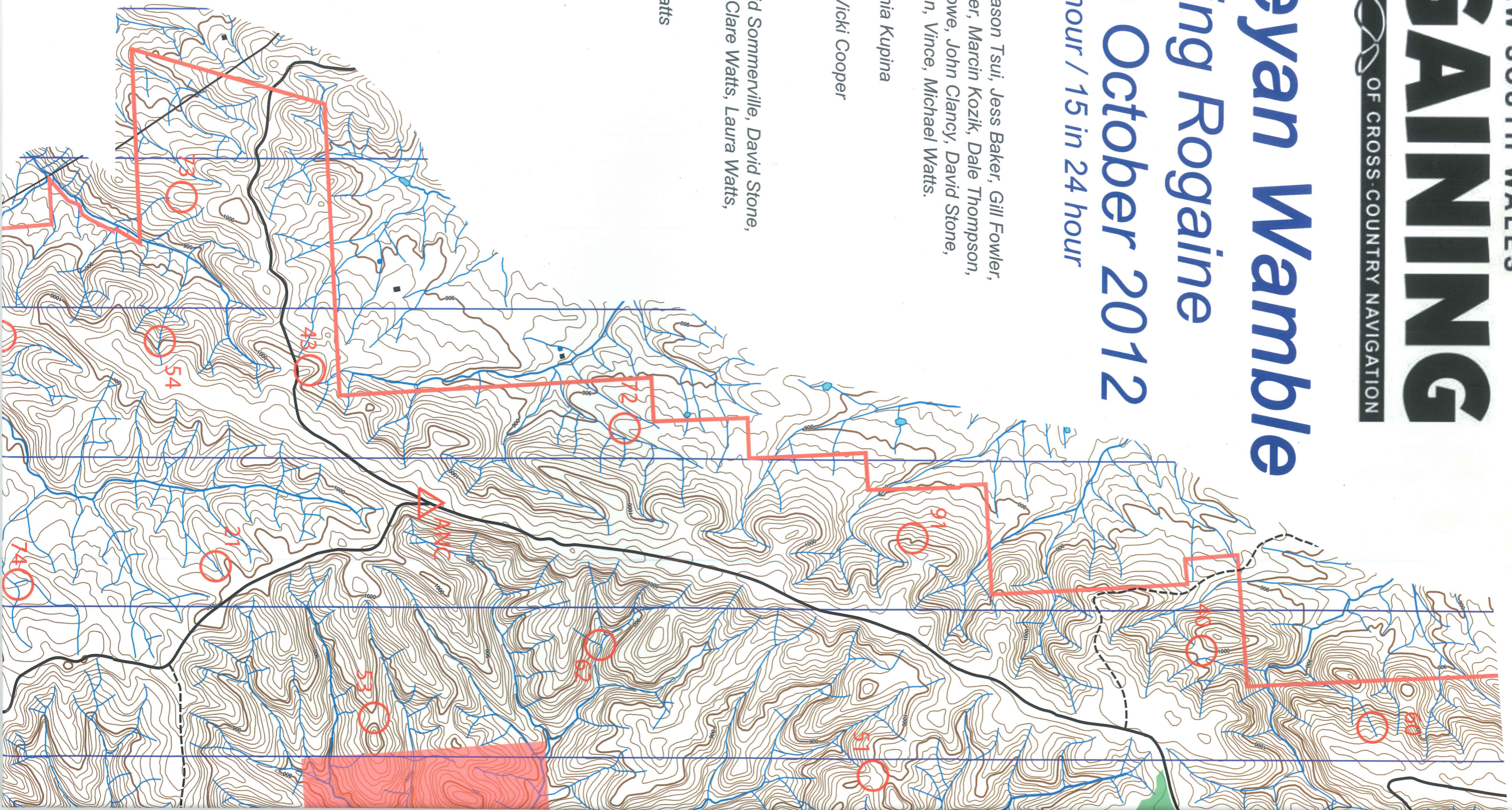
Catering: Alan Mansfield, Sonia Kupina

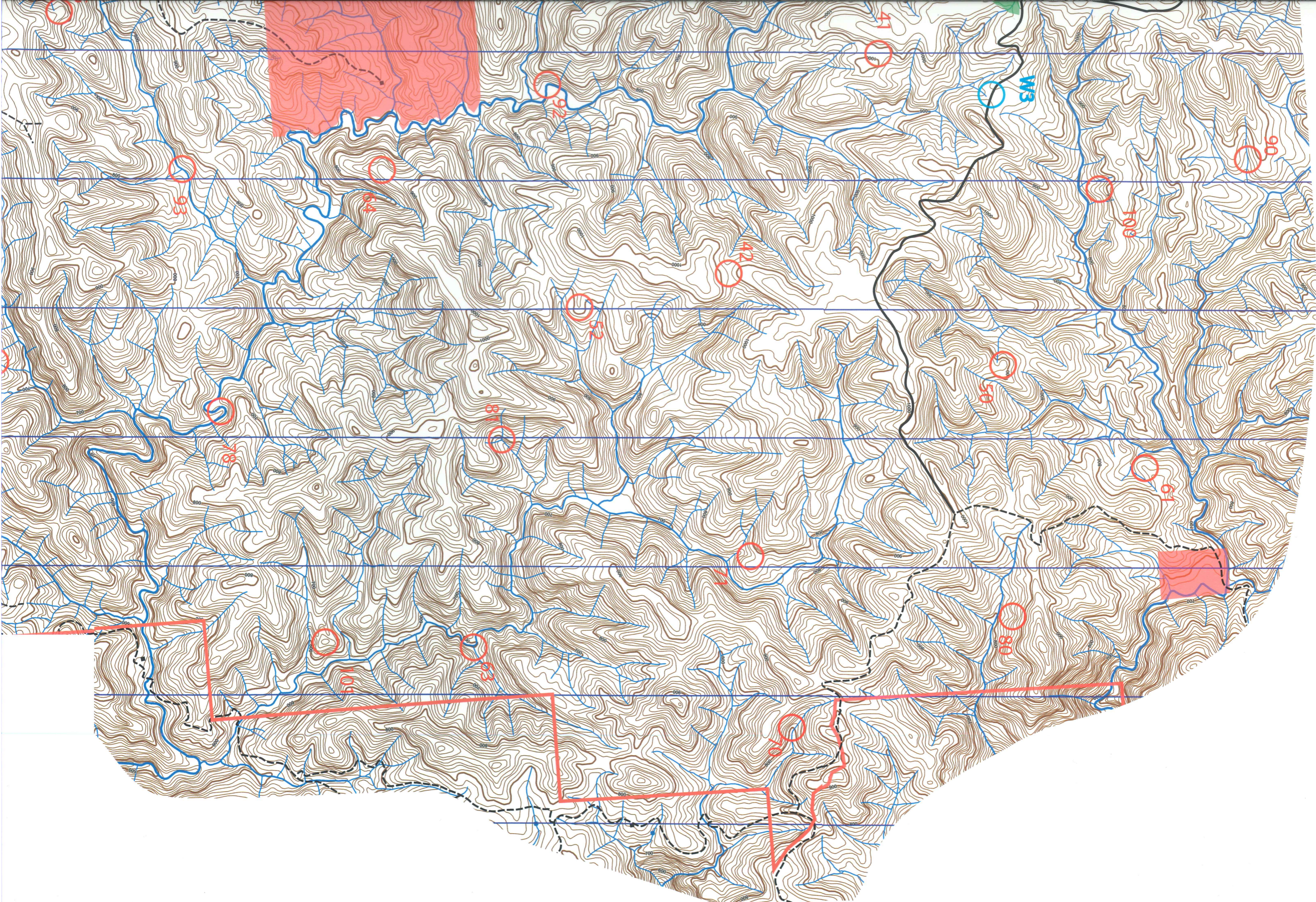
Administration: Graeme and Vicki Cooper

Event Safety: BWRS

Volunteers: Jason Tsui, David Sommerville, David Stone,
Richard Sage, Nihal Danis, Clare Watts, Laura Watts,
Dale Thompson

Event Organiser: Michael Watts





Base Map traced from LPI 1:25000 maps
Richlands 8829-2N
Mount Armstrong 8829-1S
Bindook 8829-4S

Source Maps: © LPI - NSW Department of Finance and Services
Panorama Avenue, Bathurst 2795
Used with permission

Field Work
© NSW Rogaining Association 2012

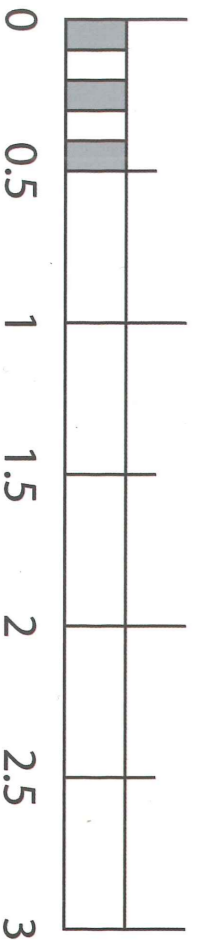
With thanks to the landholders:

Ken Fleming, Oak Grange



Blue Mountains National Park
Mares Forest National Park
Wombeyan Karst Conservation Reserve

- Contour
- Major contour; with height marker
- Watercourse; with dam
- Road
- Track
- Buildings
- Quarry
- 330kV Transmission Line
- Hash House (HH); All Night Cafe (ANC)
- Control location and number
- Water drop and reference
- Impenetrable scrub

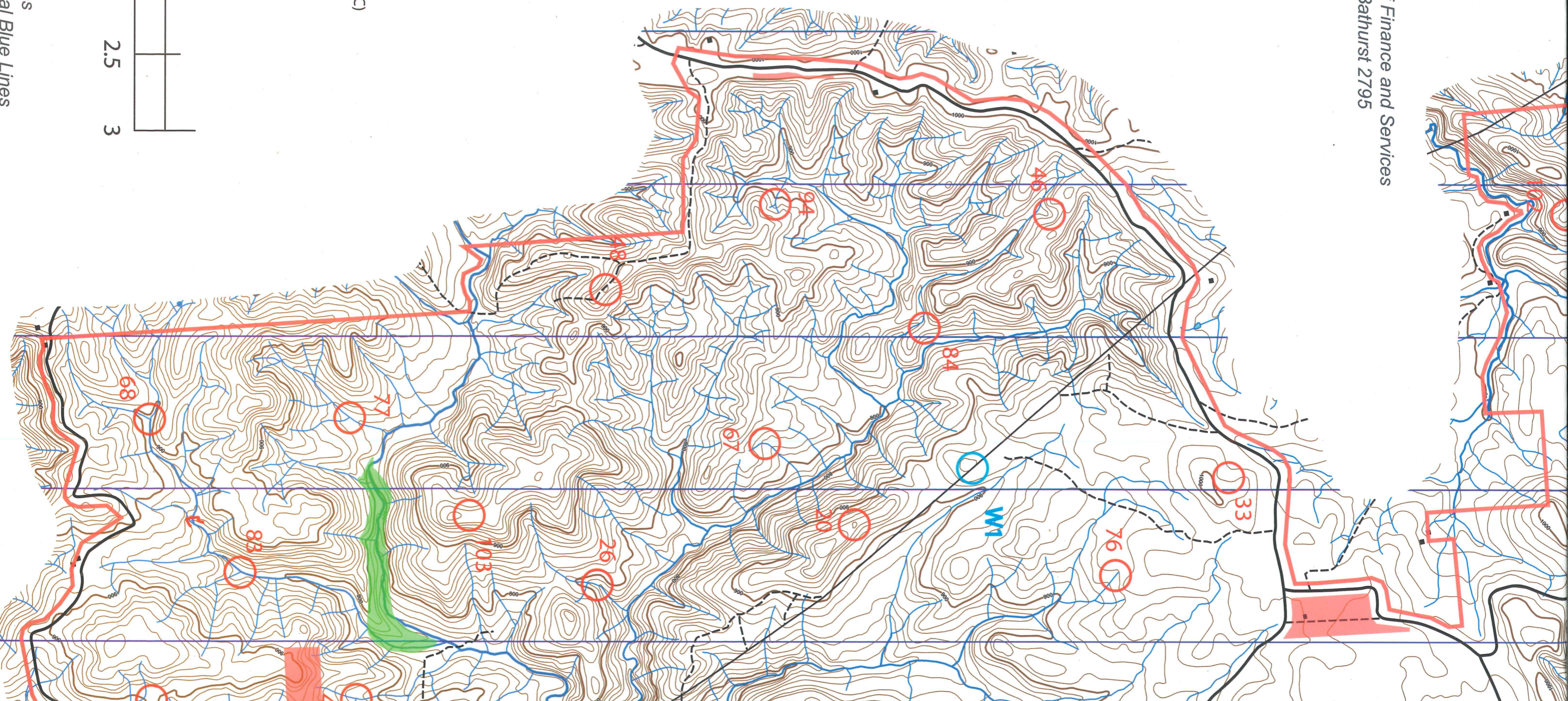


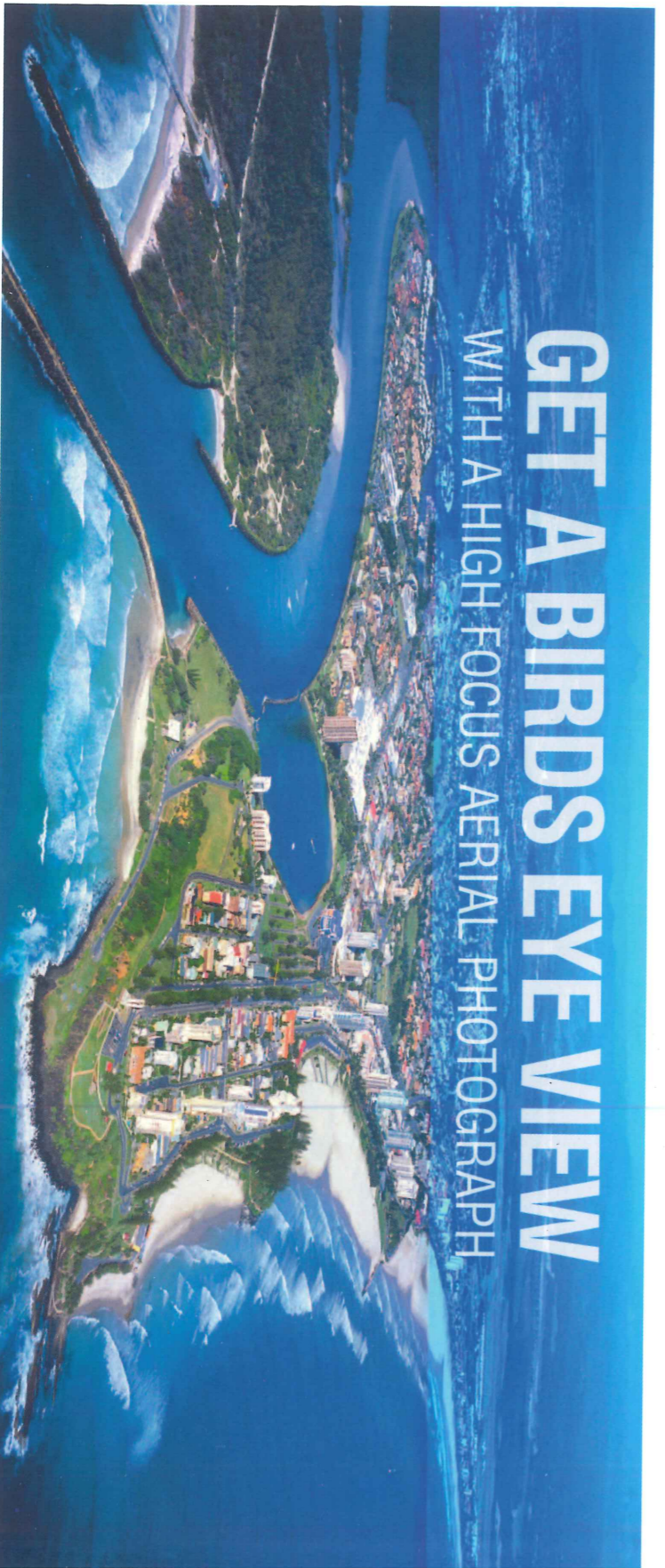
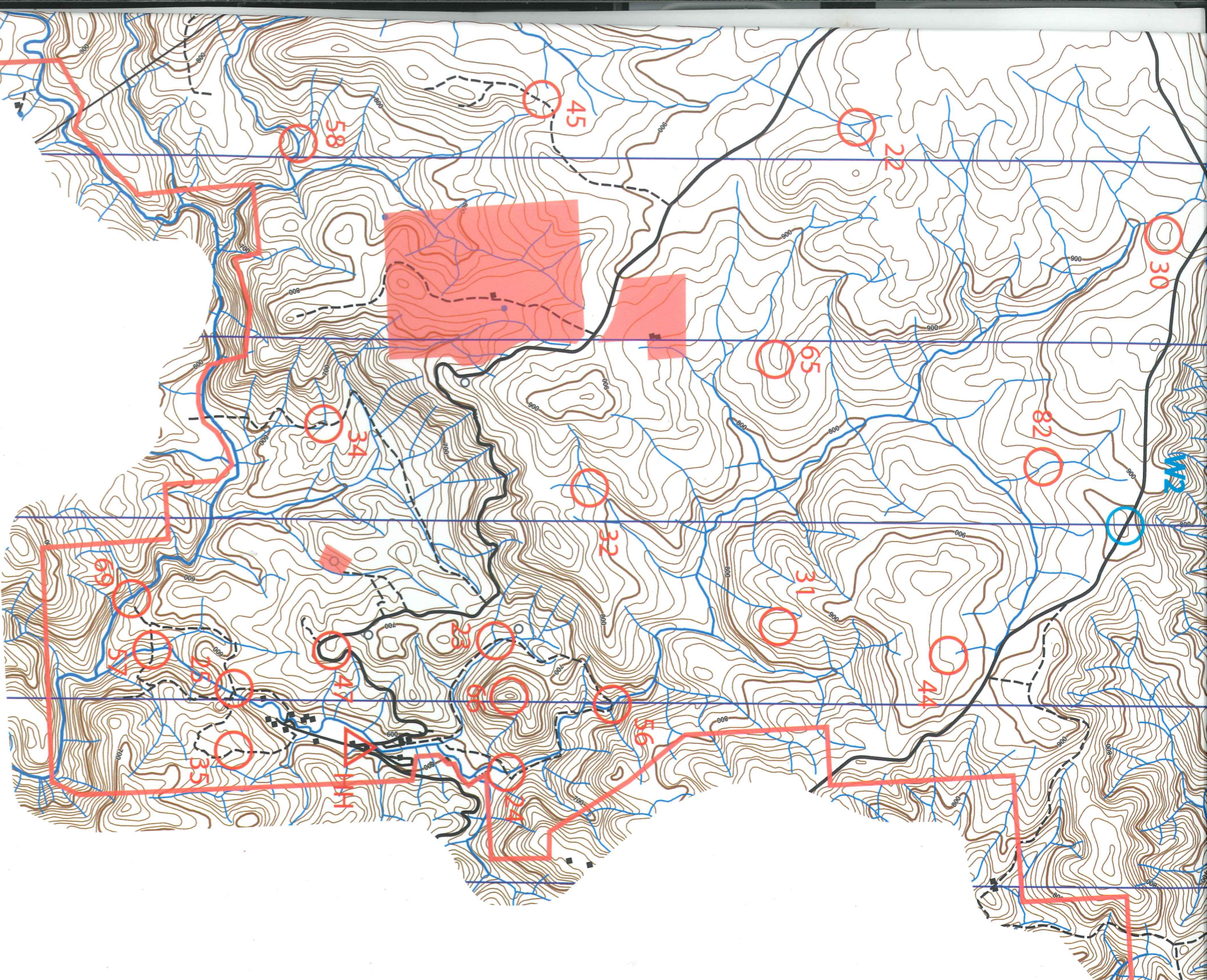
Kilometres

Scale 1:25000

Contour Interval 10 metres

Orientation is Magnetic North - Vertical Blue Lines





GET A BIRDS EYE VIEW

WITH A HIGH FOCUS AERIAL PHOTOGRAPH

NSW Land & Property
 Information
A Division of the Department of Finance & Services

For more information on Aerial Photography
 contact **The Bathurst Map Shop**

Panorama Avenue, Bathurst 2795
 Phone: 6332 8123 | Fax: 6332 8299

www.lpi.nsw.gov.au