



DANUERA

YALWAL PLATEAU

MORTON PARK

ABANDONED MINES

ABANDONED MINES

ABANDONED MINES

ABANDONED MINES

ABANDONED MINES

ABANDONED MINES

ABANDONED MINES

ABANDONED MINES

ABANDONED MINES

ABANDONED MINES

ABANDONED MINES

ABANDONED MINES

ABANDONED MINES

ABANDONED MINES

YALWAL

YALWAL CREEK

YALWAL CREEK

YALWAL CREEK

YALWAL CREEK

LINKENBAG CREEK

LINKENBAG CREEK

LINKENBAG CREEK

LINKENBAG CREEK

LINKENBAG CREEK

LINKENBAG CREEK

LINKENBAG CREEK

FURUKA CREEK

FURUKA CREEK

FURUKA CREEK

FURUKA CREEK

FURUKA CREEK

FURUKA CREEK

FURUKA CREEK

FURUKA CREEK

FURUKA CREEK

SUKKA CREEK

SUKKA CREEK

SUKKA CREEK

SUKKA CREEK

SUKKA CREEK

SUKKA CREEK

SUKKA CREEK

MASON CREEK

MASON CREEK

MASON CREEK

MASON CREEK

MASON CREEK

MASON CREEK

MASON CREEK

MC PHERSON CREEK

MC PHERSON CREEK

MC PHERSON CREEK

MC PHERSON CREEK

MC PHERSON CREEK

MC PHERSON CREEK

MC PHERSON CREEK

MARKENIE SHOULE

MARKENIE SHOULE

MARKENIE SHOULE

MARKENIE SHOULE

MARKENIE SHOULE

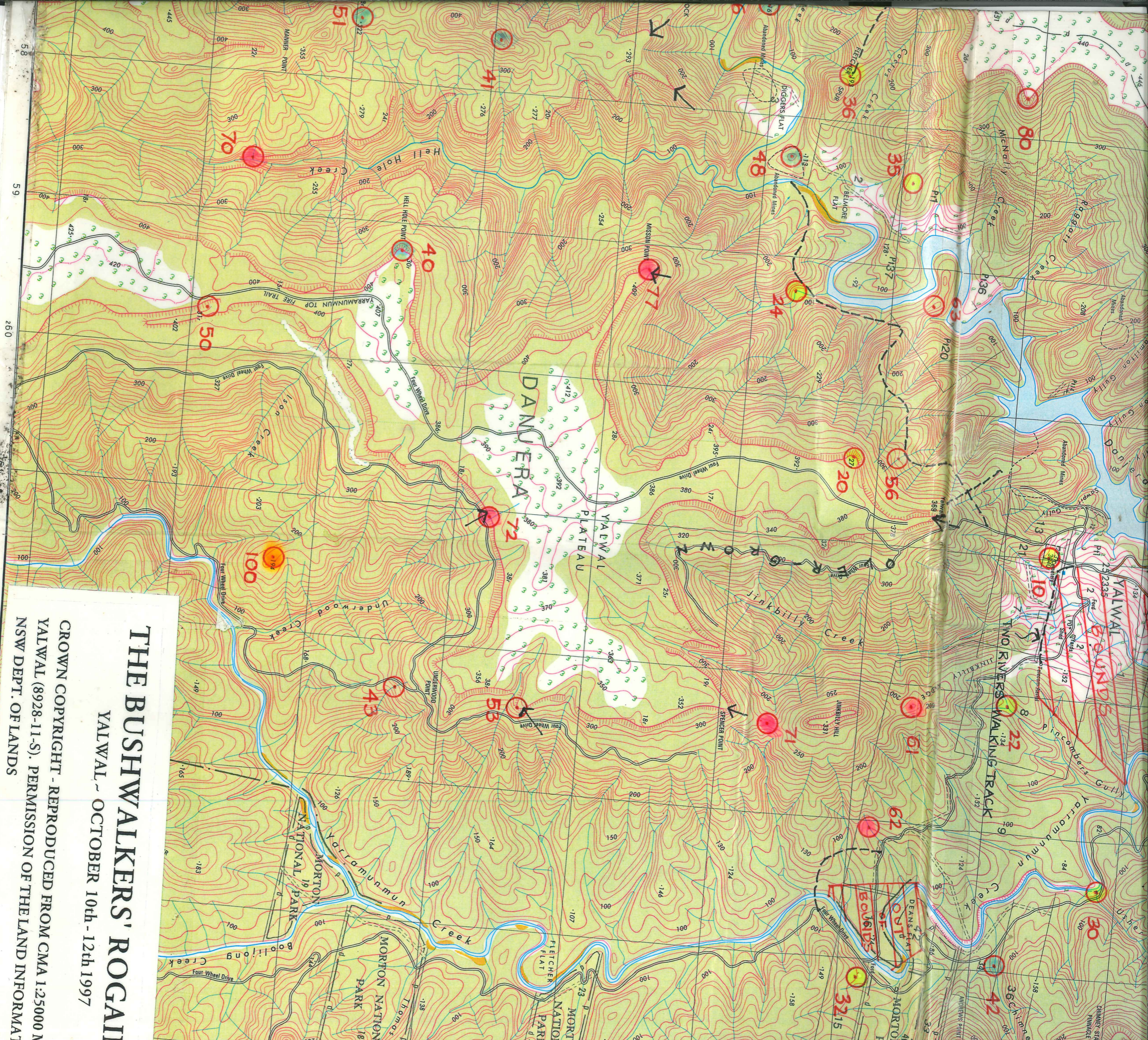
MARKENIE SHOULE

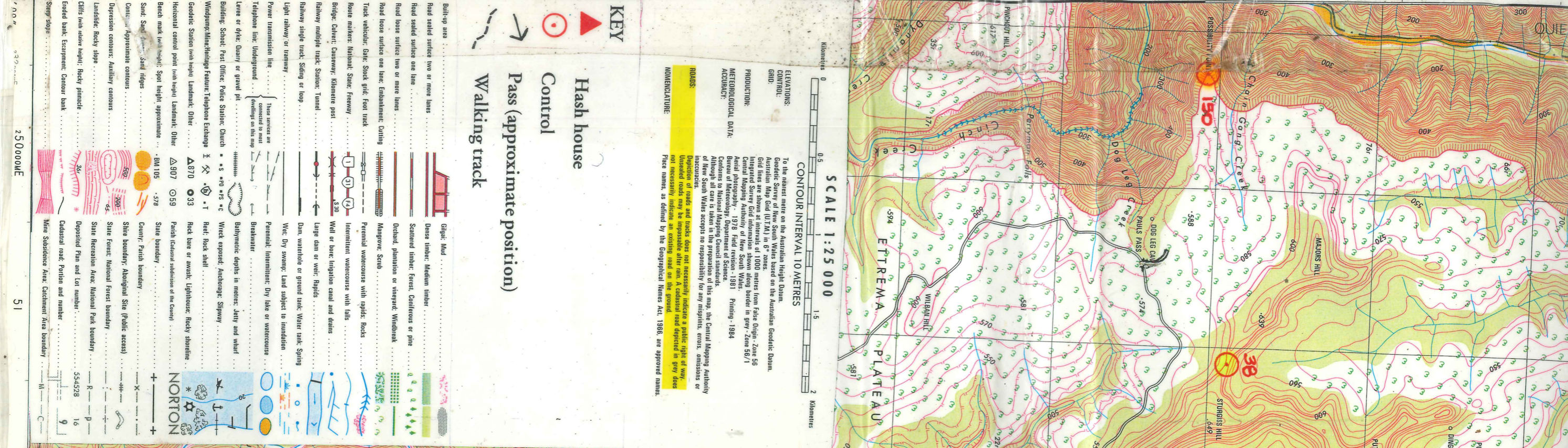
MARKENIE SHOULE

**THE BUSHWALKERS' ROGAII**  
YALWAL - OCTOBER 10th-12th 1997

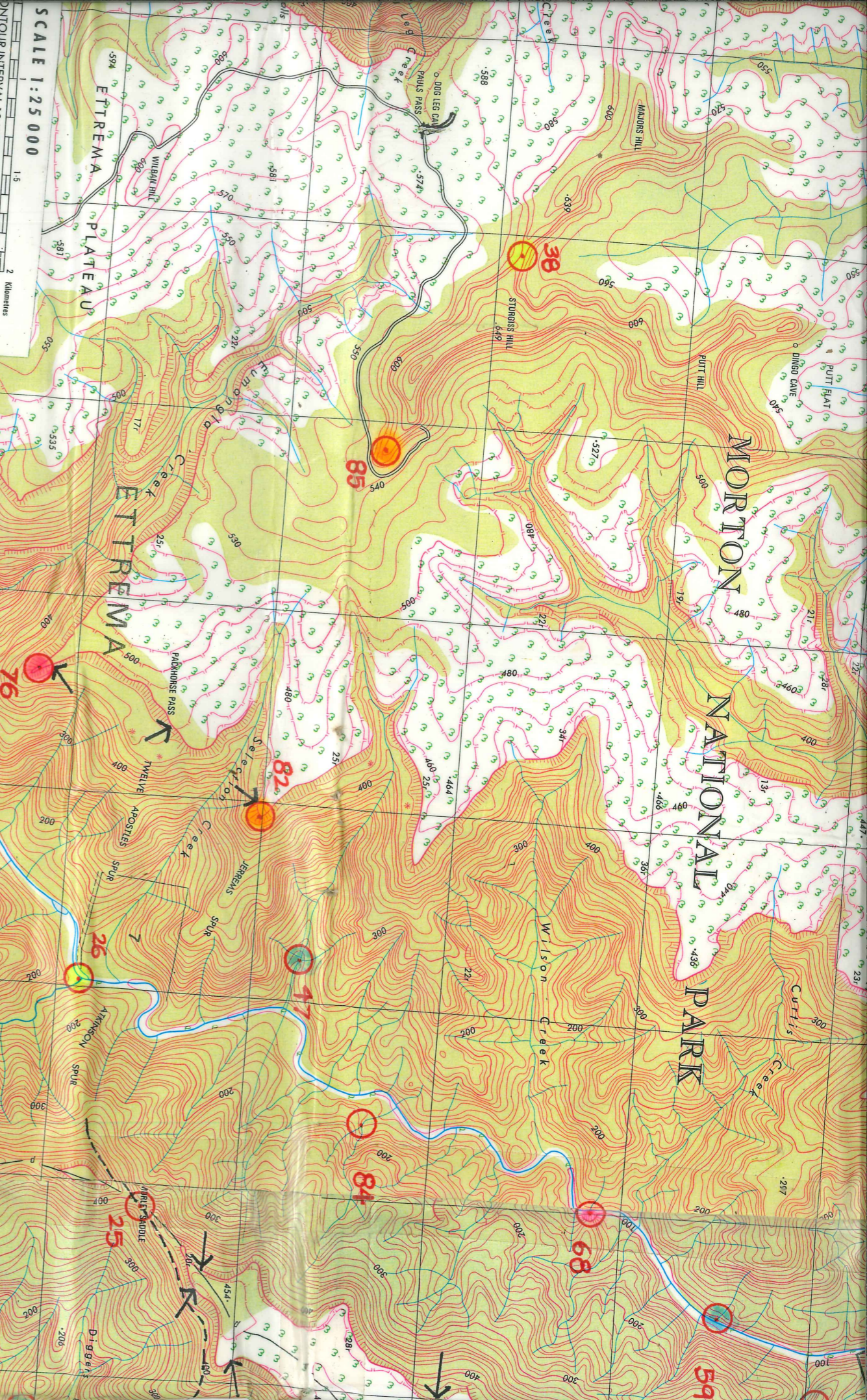
CROWN COPYRIGHT - REPRODUCED FROM CMA 1:25000 N  
YALWAL (8928-11-S). PERMISSION OF THE LAND INFORMAT  
NSW DEPT. OF LANDS

62 63 64 65





# MORTON NATIONAL PARK



SCALE 1:25 000  
 HORIZONTAL INTERVAL 10 METRES  
 1.5 2 Kilometres

Nearest metre on the Australian Height Datum.  
 The Survey of New South Wales based on the Australian Geodetic Datum.  
 The Map Grid (UTM) zones used are shown at intervals of 100 metres from False Origin - Zone 56  
 Mapping Authority of New South Wales (Map Grid in grey - Zone 56/7)  
 Topography - 1978 Field revision - 1981 Printing - 1984  
 This is a National Mapping Council standard.  
 South Wales accepts no responsibility for any misprints, errors, omissions or  
 inaccuracy of the map. The Central Mapping Authority  
 of roads and tracks does not necessarily indicate a public right of way.  
 Roads may be impassable after rain. Seasonal roads depicted in grey does  
 not necessarily indicate an existing road on the ground.  
 Names, as defined by the Geographical Names Act, 1986, are approved names.

(state position)

- Gilgai: Mud
- Dense timber: Medium timber
- Scattered timber: Forest, Coniferous or pine
- Orchard: plantation or vineyard: Windbreak
- Mangrove: Scrub
- Perennial watercourse with rapids: Rocks
- Intermittent watercourse with falls
- Wall or bank: Irrigation canal and drains
- Large dam or weir: Rapids
- Dam, weirloch or ground tank: Water tank: Spring
- Wet: Dry swamp: Land subject to inundation
- Perennial: Intermittent: Dry lake or watercourse
- Breakwater
- Bathymetric depths in metres: Jetty and wharf
- Weir: Rock spill
- Reef: Rock shelf
- Rock lere or awash: Lighthouse: Rocky shoreline
- Patch (caustic) substation of the County
- State boundary
- County: Parish boundary
- Shire boundary: Aboriginal Site (Public access)
- State Forest: National Forest boundary
- State Recreation Area: National Park boundary
- Deposited Plan and Lot number: 554528 16 9
- Cathedral road: Pylon and number
- Mine Substence Area: Caltanum Area boundary

