

21st ANNUAL

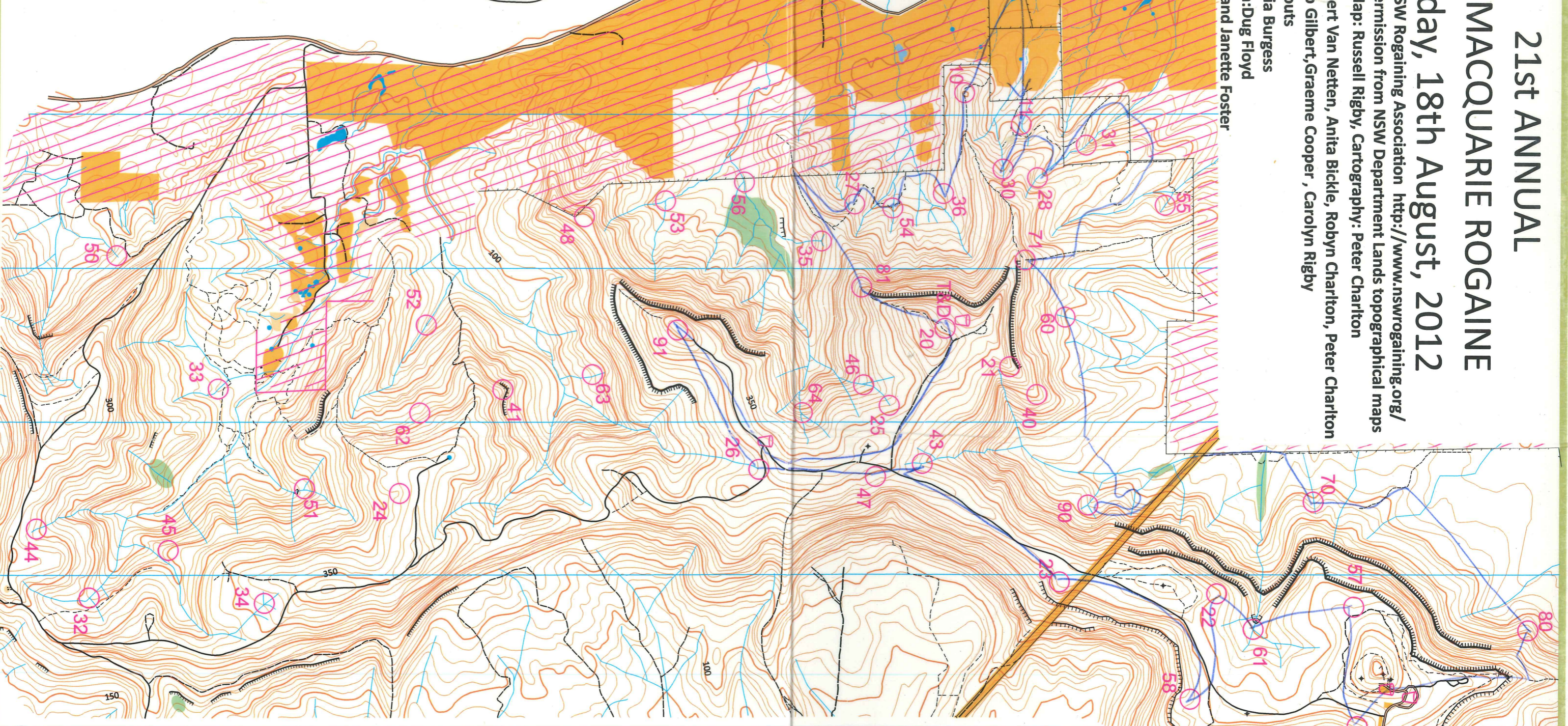
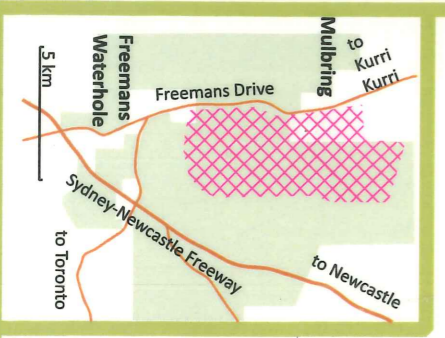
LAKE MACQUARIE ROGAINE

Saturday, 18th August, 2012

Organised for the NSW Rogaining Association <http://www.nswrogaining.org/>
 Reproduced with permission from NSW Department Lands topographical maps
 Base Map: Russell Rigby, Cartography: Peter Charlton

Setting & Vetting: Bert Van Netten, Anita Bickle, Robyn Charlton, Peter Charlton
 Administration: Bob Gilbert, Graeme Cooper, Carolyn Rigby
 Caterers: Cardiff Scouts
 Tea & Damper: Sylvia Burgess
 Safety Coordination: Dug Floyd
 Land Owners: Paul and Janette Foster

HASH HOUSE
 coords
 32 54 13 S
 151 29 17 E



Scale 1:25 000
 Contour interval
 10 metres

LEGEND

- sealed road
- unsealed road
- major track
- minor track
- indistinct track
- cliff
- crossable pipeline
- building
- contours
- watercourse
- creek
- waterhole
- dam
- drinkable water
- open forest
- clearing
- thick vegetation
- out of bounds



11
 35
 28
 31
 55
 71
 60
 90
 70
 80
 57
 42
 58
 61
 70
 90
 28
 71
 30
 28
 36
 54
 81
 46
 25
 47
 43
 20
 21
 40
 60
 21
 90
 28
 58
 42
 61
 80
 23
 23
 43
 47
 5
 21
 40
 29
 81

Control Number	Description
10	The Knoll
11	Watercourse bend
20	The Spur, Tea and Damper
21	Neck of the spur
22	End of Spur
23	Flat Spur
24	The Gully, below 3m rockface
25	Fallen log in Watercourse
26	Watercourse
27	The flat on the Spur
28	The Watercourse
30	Watercourse Shallow
31	Watercourse, Top of 6m intermittent waterfall
32	Watercourse Junction
33	The Watercourse
34	North East watercourse junction
35	Watercourse Junction
36	A Gully
40	The Spur
41	The Spur
42	Rocky outcrop in watercourse gully
43	20m below Watercourse Junction in natural arch
44	The Watercourse upper part
45	Flat part towards end of Narrow Spur
46	A Watercourse Junction, above axe grooves
47	The Gully
48	Top of the Spur
50	The Watercourse upper part
51	North Watercourse Junction
52	The Watercourse, foot of 10m intermittent waterfall
53	Watercourse Junction
54	The Watercourse
55	The Eastern Watercourse
56	Watercourse Junction
57	The Gully
58	A Gully Junction
60	The Watercourse
61	Watercourse Junction, Spear and carving
62	The Gully
63	The Watercourse
64	Watercourse Junction, near mossy boulder
70	The Watercourse
71	Bend in indistinct path
80	The Spur
81	The Spur
90	Watercourse Junction
91	Rock Cairn on Knoll