

# 20th ANNUAL LAKE MACQUARIE ROGAINE

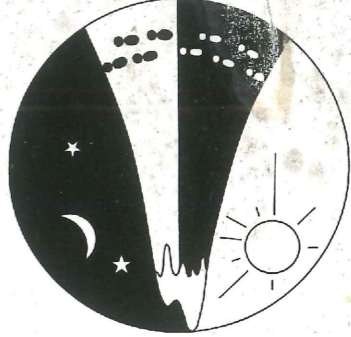
## Saturday, 13th August, 2011

Scale 1:25 000

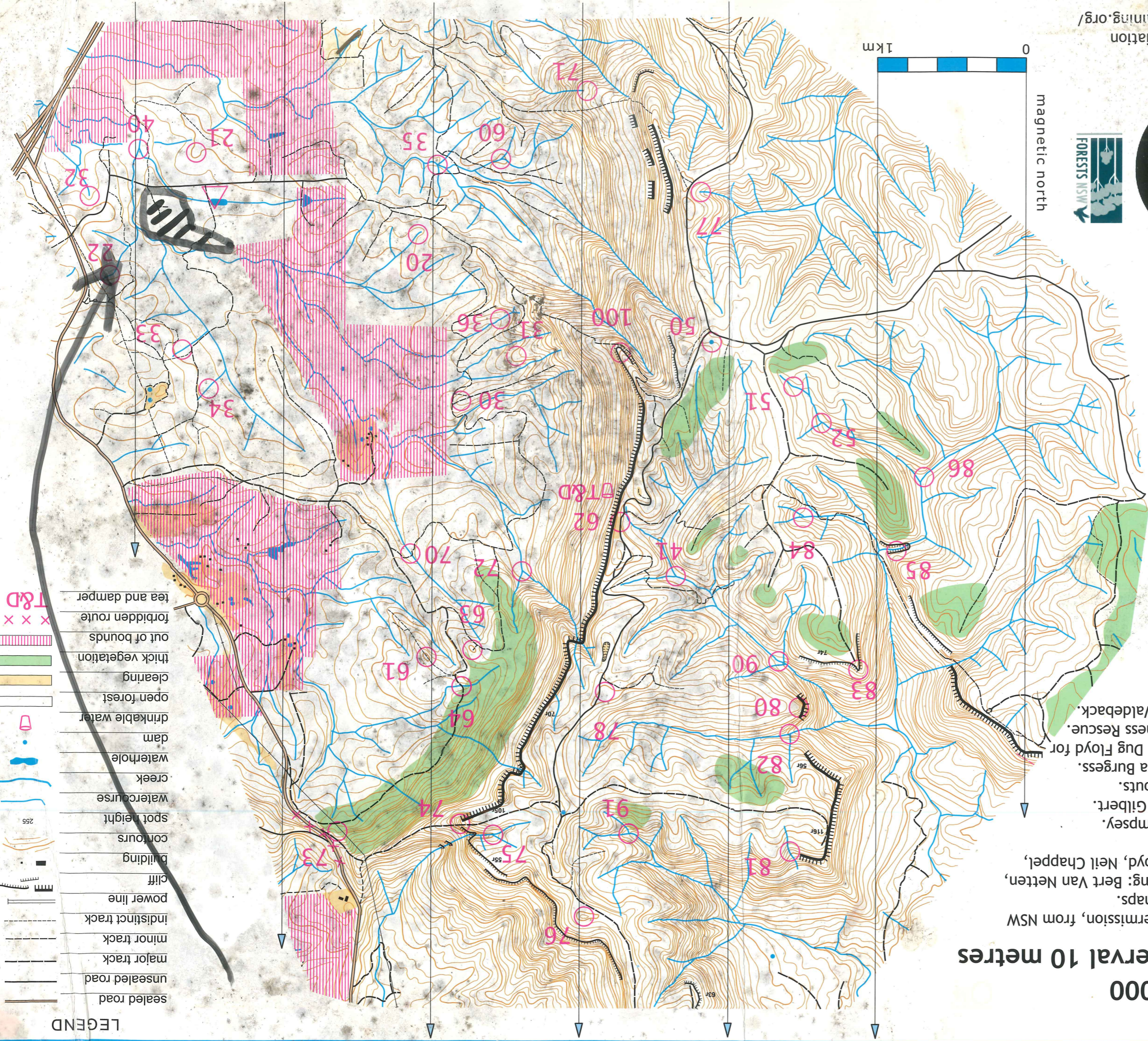
Contour interval 10 metres

Reproduced, with permission, from NSW Lands Department maps.  
 Course setting/vetting: Bert Van Netten, Anita Bickle, Dug Floyd, Neil Chappel, Rob & Marg Cook.  
 Cartography: Ian Dempsey.  
 Administration: Bob Gilbert.  
 Caterers: Cardiff Scouts.  
 Tea & Damper: Sylvia Burgess.  
 Safety coordination: Dug Floyd for Bushwalkers Wilderness Rescue.  
 Landowner: Zache Waldeback.

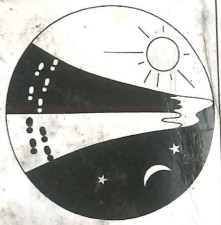
Hash House  
 33deg0'24"S  
 151deg28'40"E  
 T&D  
 32deg59'1"S  
 151deg27'17"E



Organised for the  
 NSW Rogaining Association  
<http://www.nswrogaining.org/>



- LEGEND**
- sealed road
  - unsealed road
  - major track
  - minor track
  - indistinct track
  - power line
  - cliff
  - building
  - contours
  - spot height
  - watercourse
  - creek
  - waterhole
  - dam
  - drinkable water
  - open forest
  - clearing
  - thick vegetation
  - out of bounds
  - forbidden route
  - tea and damper
  - T&D



# COURSESETTER'S NOTES

## 2011 Lake Macquarie 6 & 12 Hour Rogaine

|                         |   |
|-------------------------|---|
| <b>Start</b>            | 12 noon   |
| <b>Finish</b>           | 6pm (6 hour), 12 midnight (12 hour)   |
| <b>Penalty points</b>   | 10 points per minute late, or part thereof. Team is disqualified if more than 30 minutes late.  |
| <b>Terrain</b>          | Eucalypt forest with generally good going and plenty of tracks. We've marked some extra tracks, but you'll find more. Between 51 and 85 use the bank on either side of the creek rather than the rocky creek.   |
| <b>Safety</b>           | <p>There are nice views on many of the high points - #83, #62, #81.</p> <ol style="list-style-type: none"> <li>1. Do not split up. All team members are required to visit checkpoints.</li> <li>2. Hand in an intended route sheet for your team before you start.</li> <li>3. Some, but by no means all, cliffs have been added to the map. Expect to find cliffs anywhere the terrain is steep. If it's wet, take extreme care in steep areas.</li> <li>4. If you become disoriented, go to one of the many tracks running along the ridges.</li> <li>5. Emergency phone contact is 0439739836 (mob) or 0147148161 (sat). Mobile phones can be used in most parts of the area.</li> </ol> |
| <b>Tea &amp; Damper</b> | <p>Located as marked in the central part of the map. Open from 3pm to 9pm.</p> <ul style="list-style-type: none"> <li>• At the hash house.</li> <li>• At the Tea and Damper.</li> </ul>   |
| <b>Water</b>            |   |
| <b>Novices</b>          | Try the following loop: 20, 100, 62, 74, 73, 64, 70, 33, 32. Also consider a lower loop in the south-east part of the map.  |

## 2011 LAKE MACQUARIE ROGAINE CHECKPOINT DESCRIPTIONS

|    |                                       |     |   |
|----|---------------------------------------|-----|---|
| 20 | The indistinct watercourse junction   | 70  | The watercourse, under the bridge                                       |
| 21 | The spur, behind large fallen log     | 71  | The gully   |
| 22 | The head of the erosion gully, 1.3m   | 72  | The watercourse junction  |
|    |                                       | 73  | The watercourse. Streamered handrail between tracks. KEEP OFF MAIN ROAD |
| 30 | The spur, flat end                    | 74  | The base of the cliff, behind a boulder                                 |
| 31 | The spur, semi-clearing               | 75  | The watercourse junction  |
| 32 | The gully                             | 76  | The knoll   |
|    |                                       | 77  | The gully   |
| 33 | The watercourse                       | 78  | A knoll   |
| 34 | The shallow watercourse               |     |   |
| 35 | The watercourse junction              | 80  | The spur end  |
| 36 | The gully junction                    | 81  | The watercourse, 20m from the cliff                                     |
|    |                                       | 82  | The watercourse junction  |
| 40 | The watercourse junction              | 83  | The end of spur, below boulders on abseiler's rock                      |
| 41 | The watercourse junction              | 84  | The watercourse junction  |
|    |                                       | 85  | A wind cave in the canyon, attack off northern spur                     |
| 50 | The dam, behind the tree fern         | 86  | The watercourse, in a wind cave   |
| 51 | A watercourse junction                |     |   |
| 52 | The watercourse junction              |     |   |
|    |                                       | 90  | The middle watercourse  |
| 60 | The watercourse junction              | 91  | The watercourse junction  |
| 61 | The knoll                             |     |   |
| 62 | The lookout T&D                       | 100 | The spur, above the cliff   |
| 63 | The knoll                             |     |   |
| 64 | The watercourse, under the log bridge |     |   |