

28th PADDY PALLIN ROGAINE



16th June 1991
EUROKA CLEARING

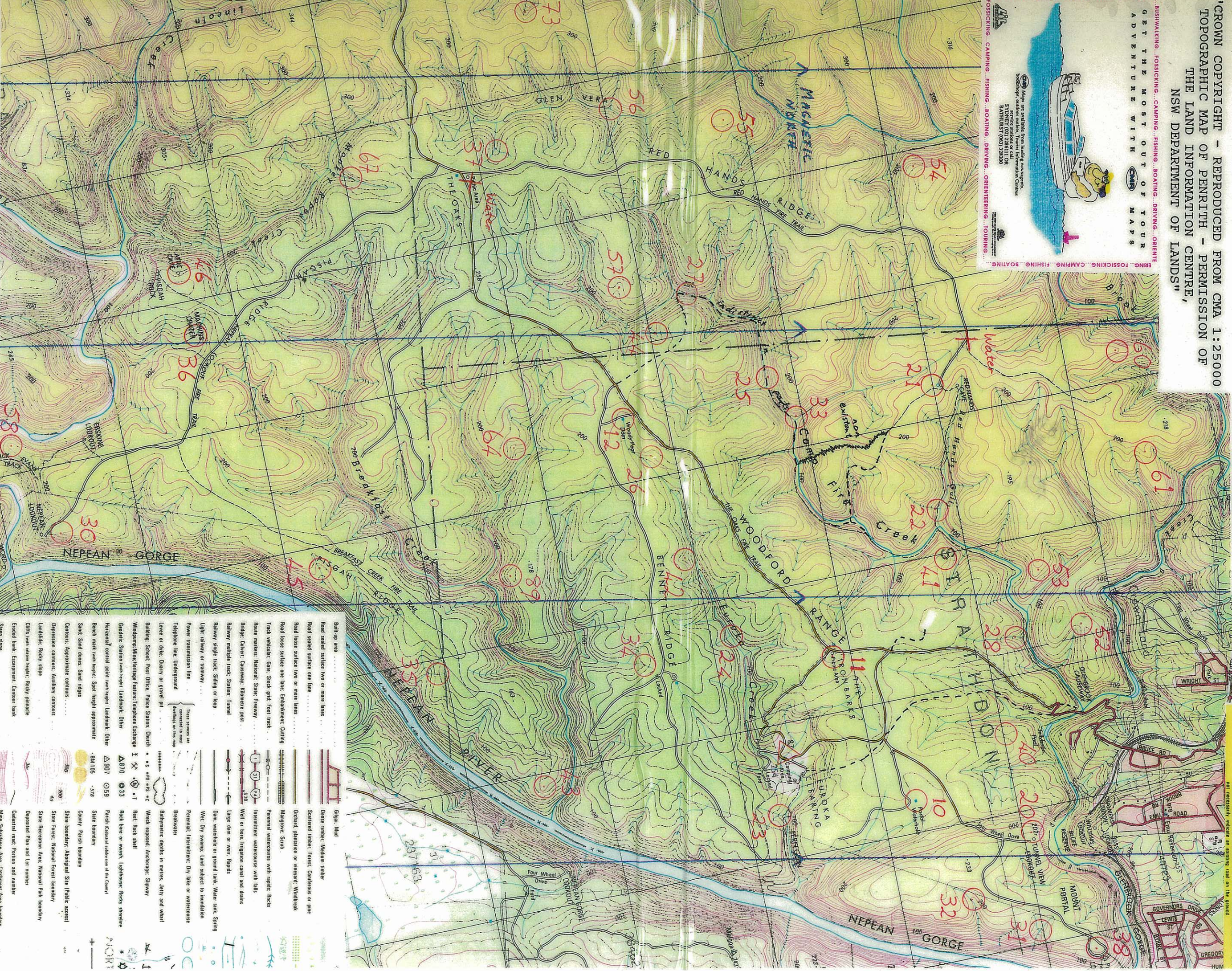


"CROWN COPYRIGHT - REPRODUCED FROM CMA 1:25000
TOPOGRAPHIC MAP OF PENRITH - PERMISSION OF
THE LAND INFORMATION CENTRE,
NSW DEPARTMENT OF LANDS"

GET THE MOST OUT OF YOUR
ADVENTURE WITH **CMA** MAPS



ENG. FOSSICKING...CAMPING...FISHING...BOATING...DRIVING...ORIENTEERING...TOURING...
BUSHWALKING...FOSSICKING...CAMPING...FISHING...BOATING...DRIVING...ORIENTEERING...TOURING...



SCALE 1:25 000

Kilometres

CONTOUR INTERVAL 10 METRES

To the nearest metre on the Australian Height Datum

Geodetic Survey of New South Wales based on the Australian Geodetic Datum

Australian Map Grid (U.T.M.) in 6° zones

Grid lines are shown at intervals of 1000 metres from False Origin - Zone 55

Integrated Survey Grid information shown along border in grey - Zone 55/1

Central Mapping Authority of New South Wales

Aerial photography - 1980 Field revision 1985

Printed by Department of Science

Although all care is taken in the preparation of this map, the Central Mapping Authority of New South Wales accepts no responsibility for any misprints, errors, omissions or inaccuracies.

Direction of roads and tracks does not necessarily indicate a public right of way

Unmarked roads may be impassable after rain. A dashed line depicts a road on the ground

and necessarily indicates an existing road on the ground

ROADS

ROADS

ROADS

ROADS

ROADS

ROADS

ROADS

ROADS

ROADS

ROADS

ROADS

ROADS

ROADS

ROADS

ROADS

ROADS

ROADS

ROADS

ROADS

ROADS

ROADS

ROADS

ROADS

ROADS

ROADS

ROADS

ROADS

ROADS

ROADS

ROADS

ROADS

ROADS

ROADS

ROADS

ROADS

ROADS

ROADS

ROADS

ROADS

ROADS

ROADS

ROADS

ROADS

ROADS

ROADS

ROADS

ROADS

ROADS

ROADS

ROADS

ROADS

ROADS

ROADS

ROADS

ROADS

ROADS

ROADS

ROADS

ROADS

ROADS

ROADS

ROADS

ROADS

ROADS

ROADS

ROADS

ROADS

ROADS

ROADS

ROADS

ROADS

ROADS

ROADS

ROADS

ROADS

ROADS

ROADS

ROADS

ROADS

ROADS

ROADS

ROADS