



# Explorergaine

6 hr Rogaine  
**Mt Victoria**  
 29th March, 2026

0 500 1,000 m



**1:20,000**  
 10m Contours

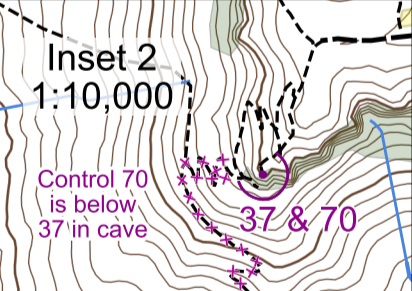
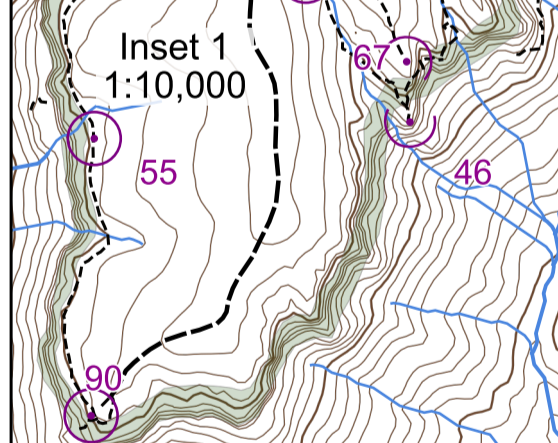
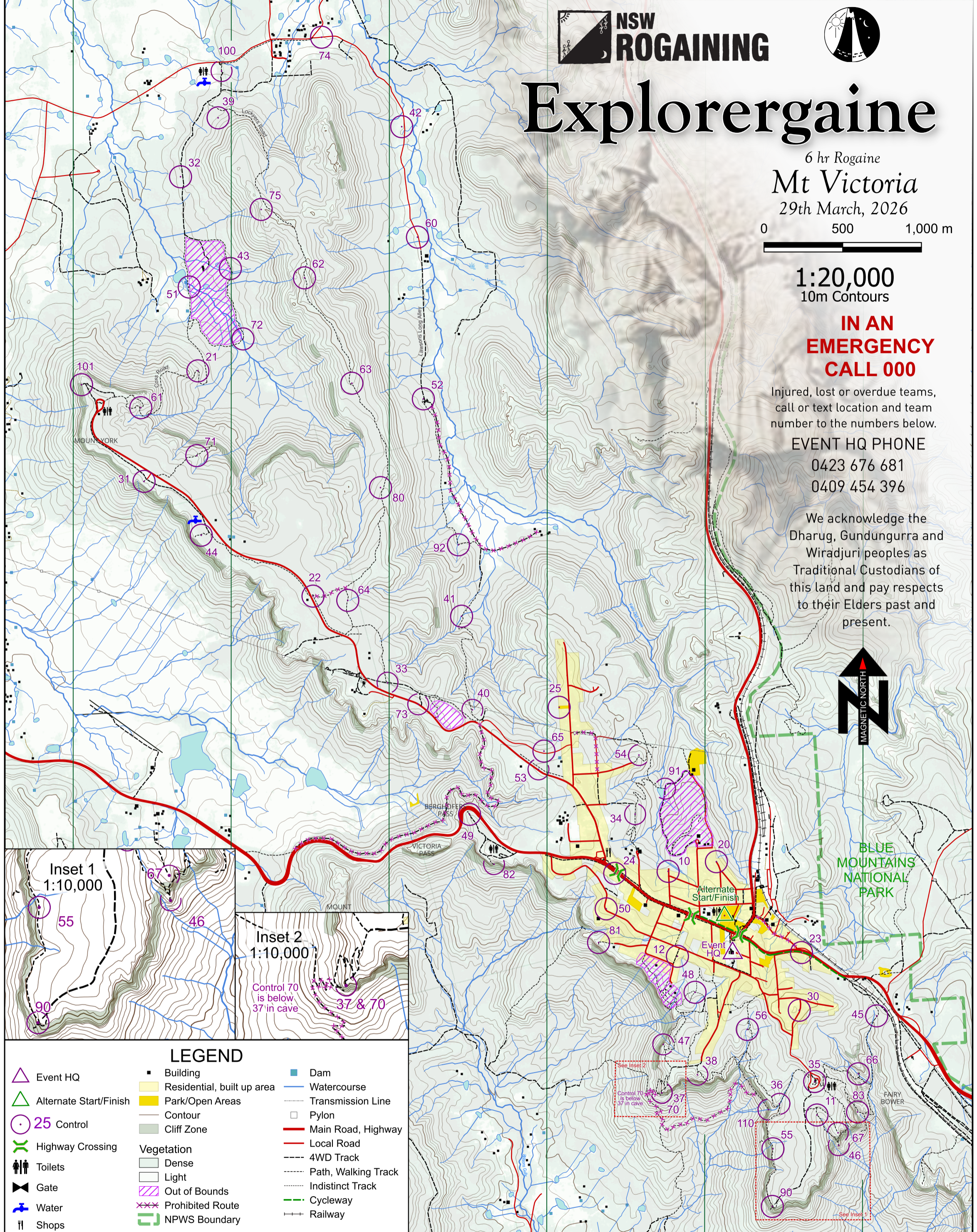
**IN AN  
 EMERGENCY  
 CALL 000**

Injured, lost or overdue teams,  
 call or text location and team  
 number to the numbers below.

**EVENT HQ PHONE**

0423 676 681  
 0409 454 396

We acknowledge the  
 Dharug, Gundungurra and  
 Wiradjuri peoples as  
 Traditional Custodians of  
 this land and pay respects  
 to their Elders past and  
 present.



LEGEND			
	Event HQ		Building
	Alternate Start/Finish		Residential, built up area
	25 Control		Park/Open Areas
	Highway Crossing		Watercourse
	Toilets		Contour
	Gate		Dam
	Water		Transmission Line
	Shops		Pylon
	Out of Bounds		Main Road, Highway
	Prohibited Route		Local Road
	NPWS Boundary		4WD Track
	Cycleway		Path, Walking Track
	NPWS Boundary		Indistinct Track
	NPWS Boundary		Railway
	Out of Bounds		Cliff Zone
	Dense Vegetation		Light Vegetation

CONTROL LIST					
#	Description	#	Description	#	Description
10	The road end	33	The track intersection, two signs	45	The track bend
11	An old car, W side of track	34	The track	46	The side track end, a viewpoint
12	The path	35	10m W of a picnic shed	47	The side track end, a viewpoint
20	The road end	36	The track intersection, a sign	48	The track intersection
21	The track bend	37	The track end, a viewpoint	49	The track end
22	The track	38	10m N of a lookout	50	The road bend, NE side
23	The service road, a fence	39	60m SW of the track	51	The creek, an historic sign
24	The Highway, S side	40	The track, a chain gate	52	The track and road intersection
25	A green space, a tree	41	The track, a bridge	53	The track, N side of the road
30	A road, a sign	42	30m W of the road, a tree	54	The track, near a boulder
31	A lookout, a fence	43	The (dry) watercourse	55	The track near a small overhang
32	A fence, behind a boulder	44	Historic Wells, a tree	56	A cave, a bench
60	The (unsealed) road	74	The road, N side	61	The track junction, an overhang
62	A pagoda, 15m W of the track	80	15m W of a sign on the track	63	A rocky outcrop, 10m E of the track
64	The track	82	The track at the base of a rock wall	64	The track
65	20m N of the (unsealed) road	83	A ladder to a cave	66	A grotto, the side track
67	The path end, a viewpoint	90	The track at the base of a viewpoint	67	The path end, a viewpoint
70	A cave beneath Control 37	91	The dam, NE side, a fence	70	A cave beneath Control 37
71	The track, a rocky outcrop	92	The track bend	71	The track, near a boulder
72	The watercourse	100	The track, a gate	72	The watercourse
73	The road, N side	110	The track end, a waterfall	73	The road, N side

**AUSTRALIAN HIMALAYAN FOUNDATION**

**EVENT COORDINATOR:**  
 Julian Ledger

**COURSE SETTERS:** Stephen & Sally McKay & Bandit

**VETTERS:** Ian Brown & Milo

**MAP:** Graham Field

**CATERING:** Mt Victoria Public School P&C

THIS MATERIAL IS COPYRIGHT© NSW Rogaining Association (NSWRA). No part of this map may be reproduced or used for any other purpose without written permission.

**DISCLAIMER**  
 This map publication has been created by the NSW Rogaining Association (NSWRA) for the purpose of the event depicted in this map. The information in this map publication is intended for use as a recreational Rogaining event administered by the NSWRA. The NSWRA disclaims any liability (including for negligence) to any person in respect of anything and the consequences of anything, done, or not done by any such person in whole or partial reliance upon the whole or part of the information in this map publication.

Topographic Data © OpenStreetMap contributors  
 Elevation and stream network derived from data from Geoscience Australia. All data is licensed under international system: "Creative Commons Attribution 4.0 International".

Publication Date 03/2026  
 www.nswrogaining.org