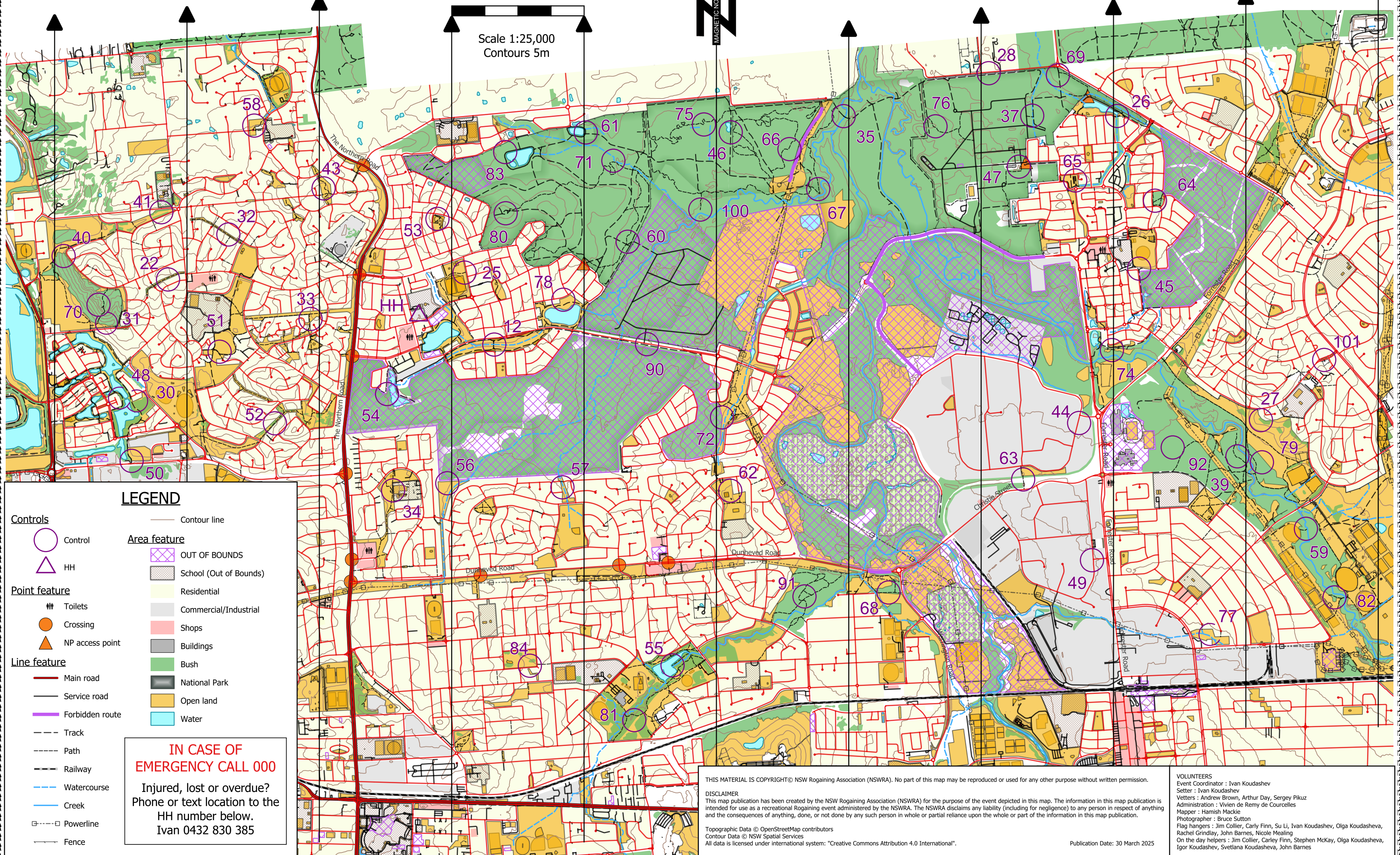


0 250 500 750 1,000 m

Scale 1:25,000
Contours 5m



LEGEND

- Controls**
- Control
 - HH
- Point feature**
- Toilets
 - Crossing
 - NP access point
- Line feature**
- Main road
 - Service road
 - Forbidden route
 - Track
 - Path
 - Railway
 - Watercourse
 - Creek
 - Powerline
 - Fence
- Area feature**
- OUT OF BOUNDS
 - School (Out of Bounds)
 - Residential
 - Commercial/Industrial
 - Shops
 - Buildings
 - Bush
 - National Park
 - Open land
 - Water
- Contour line**
- Contour line

IN CASE OF
EMERGENCY CALL 000

Injured, lost or overdue?
Phone or text location to the
HH number below.
Ivan 0432 830 385

THIS MATERIAL IS COPYRIGHT© NSW Rogaining Association (NSWRA). No part of this map may be reproduced or used for any other purpose without written permission.

DISCLAIMER

This map publication has been created by the NSW Rogaining Association (NSWRA) for the purpose of the event depicted in this map. The information in this map publication is intended for use as a recreational Rogaining event administered by the NSWRA. The NSWRA disclaims any liability (including for negligence) to any person in respect of anything and the consequences of anything, done, or not done by any such person in whole or partial reliance upon the whole or part of the information in this map publication.

Topographic Data © OpenStreetMap contributors
Contour Data © NSW Spatial Services
All data is licensed under international system: "Creative Commons Attribution 4.0 International".

Publication Date: 30 March 2025

VOLUNTEERS

Event Coordinator : Ivan Koudashev
Setter : Ivan Koudashev
Vetters : Andrew Brown, Arthur Day, Sergey Pikuz
Administration : Vivien de Remy de Courcelles
Mapper : Hamish Mackie
Photographer : Bruce Sutton
Flag hangers : Jim Collier, Carly Finn, Su Li, Ivan Koudashev, Olga Koudasheva,
Rachel Grindlay, John Barnes, Nicole Mealing
On the day helpers : Jim Collier, Carley Finn, Stephen McKay, Olga Koudasheva,
Igor Koudashev, Svetlana Koudasheva, John Barnes

Course Setter's Notes

Aim

Get as many points within the allocated time limit (6 hrs).

You do **NOT** need to attend each control on the map.

Each control is worth the first number times 10 (71 is 70, 63 is 60, **101 is 100**, and so on).

Each team member must scan their wristband at each control the team attends.

Teams must stay together.

There is no set order to collect controls.

Safety

Snakes

The bushland and grassland areas have snakes (like any bit of bush in NSW). Hence why each team MUST carry a snake bandage and know how to use it.

If bitten by a snake:

1. Stop, sit/lay down.
2. Apply snake bandage (If you don’t know how, ask event organiser prior to start).
3. Call 000 and follow their instructions.
4. Call the hash house (0432830385).

Traffic

While we have attempted to avoid most of the major roads, some are still incorportaed into the course. Take particular care around THE NORTHERN ROAD, DUNHEVED ROAD, WERRINGTON ROAD CHRISTIE STREET and FORRESTER ROAD.

****Please note a prohibited route has been marked on Dunhaved Rd. You can get between 91 and 60 via the trails leading off Dunhaved Road, or through the residential areas.**

Please cross all roads safely, obeying road rules. Like all roads, the major streets (and not so major) are patrolled by Highway Patrol. You have been warned. Participation in a rogaine will not fly as an excuse if they choose to confront you.

Injuries/illness

If you have a minor injury/illness and require assistance, either return to the Hash House or if unable to do so call the Hash house number (0432830385). We can organise for you to be driven back if you require (please, only injured/ill/etc, not simply ‘had enough’).

If you believe your injury/illness requires an ambulance and are OUTSIDE Wiannamatta Regional Park, call 000 and follow their instructions, then please also call the Hash House.

If you are INSIDE Wiannamatta Regional Park, please call the Hash House first and we will instruct you on how to provide your location to the Ambulance. Due to limited access/egress to the park, this may save time.

Toilets

Many of the parks have toilets in them. However, we were unable to mark them on the map as we could not guarantee they’d be open. Most of the retail areas have shops as well.

Control	Description
12	Bridge, Middle
22	Tree Near Light Pole
25	The Very Large Tree S of Path
26	Bridge
27	A Knoll, Tree. VIEW
28	Fence
30	Tree, Next to Clearing
31	Gully, Small Tree
32	Very Big Tree Close to Path
33	Tree 10m E of Track
34	Path Junction
35	Bridge, W End
37	W Bank Of Creek
39	Clearing, NE Edge
40	Fence, W of Road. VIEW
41	Spotted Gumtree

Control	Description
43	A Knoll, W of Path Bend, on Tree
44	Power Pole, 50m SSW of Road Junction
45	Path Junction, 5m North on Tree
46	Tree at S End of Dry Wetland
47	The SE Knoll, Northernmost Tip
48	Boardwalk, W Side on Small Tree
49	Road Junction, W Side on Fence
50	Walkway Bridge
51	Barrier Near Drain, 20m E of Path
52	Tree
53	Tree, Edge of Broad Knoll Beside Path. VIEW.
54	Fence Corner
55	Track end
56	N Edge of Bushland, on Tree
57	Smooth White Eucalypt
58	Tree, N of Path Bend

Water

There are no water drops in today's event. Many of the parks have bubblers, it was just not practical to mark each bubbler on the map. All the retail areas marked have water and refreshments for sale.

Tracks

All the tracks which are marked on the map WERE there at time of setting and vetting. Some are more obvious, some are faint. But all are followable.

The setter has ridden his bicycle on all the marked tracks. In saying that, tracks often disappear and new tracks are formed by locals. Your compass and the terrain will always be correct however.

Creeks

Just like all maps, just because there is a blue line marking a creek, doesn't mean there will be water in that creek.

There are a few creek crossings on the map. At time of setting, where a track is marked to cross a creek, it can be crossed. Please note, however, for the creek crossing between 39 and 79 you WILL get wet feet, and this crossing requires great care to be crossed safely.

Not everything which is marked as a creek (blue line) will necessarily have water in it.

Fences

Wiannamatta Regional Park is both surrounded by, and dissected by tall fences. These have been marked on the map. Please only cross at locations marked as crossing points on the map. This is a condition of approval to run the event from National Parks and Wildlife Services.

On the boundary to the park, holes in fences are regularly formed and patched up, so you may find new unmarked entry points. For the above reason, and for fairness of competition, please do not use them.

Where a track crosses a fence within the park, the fence WILL be crossable at that point. On the boundary to the park, holes in fences are regularly formed and patched up, other than the entry points marked.

Novice routes

Here are a few suggested routes for novices. You can either follow these directly, however we recommend you use them as a template and devise your own route.

25-53-43-52-41-40-70-31-48-50-30-51-42-54-12-78-HH

25-80-83-61-75-46-35-55-67-100-71-60-78-12-54-HH

Flight plan

Each team needs to submit a flight plan. This is useful in the event we need to mobilise a search. However, you **DO NOT** need to stick to this plan. If you wish to finish early, PLEASE advise the HH of your finish. Otherwise we need to ensure everyone is accounted for.

If you need assistance with navigation, planning routes, or any other element of the event, please see one of the volunteers at the hash house.

Control	Description
59	Indistinct Track End
60	Small Gully, 20m North of Track Junction
61	Track junction
62	A Knoll, on Tree
63	Bridge, Middle
64	Reptiles Near Path
65	On Bench Under Shelter, Ropes Creek Station
66	Track Bend
67	Track, A Very Broad Spur
68	A Clearing, N Side on Poplar Tree
69	Track junction, Old Checkpoint
70	Spur, 30m NW of track junction
71	Watercourse Near Track
72	Bend In Fence
74	A Gully, S Side of Track
75	Edge Of Watercourse

Control	Description
76	Small Gully
77	N Bank of Uncrossable Creek, on Western Tree
78	Bench, Cicadas
79	A Small Knoll. Approx 40M ENE of Track Bend. CAUTION PIT!
80	S Edge Of A Knoll
81	NW Edge of Clearing, Bench
82	Indistinct Track, S Side
83	Dam, 15m NW on Tree
84	Broad Gully
90	Fence, in Front of Cellphone Tower
91	A Broad Gully
92	A Small Knoll, NE Side
100	A Gully, Track End
101	Tree, Outside Tregear Ambulance Station