



6 / 15 IN 24 / 24 HOURS
FESTIVAL OF ROGAINING
INCORPORATING THE NSW CHAMPIONSHIPS

A CUP OF TEA IN CAPERTEE

21-22 September 2024

Regent Honeyeater © Valerina @ flickr



In an emergency call 000

Injured, lost or overdue teams -
call or text location and team number
to the numbers below

HH Sat Phone
0416 218 861

We acknowledge the traditional owners of the lands on which this event is taking place, the Wiradjuri people. We recognise their deep and enduring cultural and spiritual connection to this country, and pay our respects to their elders past and present.

Event organiser: Richard Sage

Course setters: Andrew Smith, Toni Bachvarova

Vetting and flag hanging:
Chris Stevenson, Su Li Sin, Brent Roylance, Andrew Smith,
Toni Bachvarova, Tami Koh, Marty Grant

Admin: Anita Bickle

Catering: 1st North Sydney Scouts

On the day helpers: Julian Ledger, Nihal Danis, Marty Grant

Event promotion: Nicole Mealing

Mapping: Andrew Smith

Mapped with QGIS, www.qgis.org

Special thanks to NPWS NSW
for their ongoing support of Rogaining

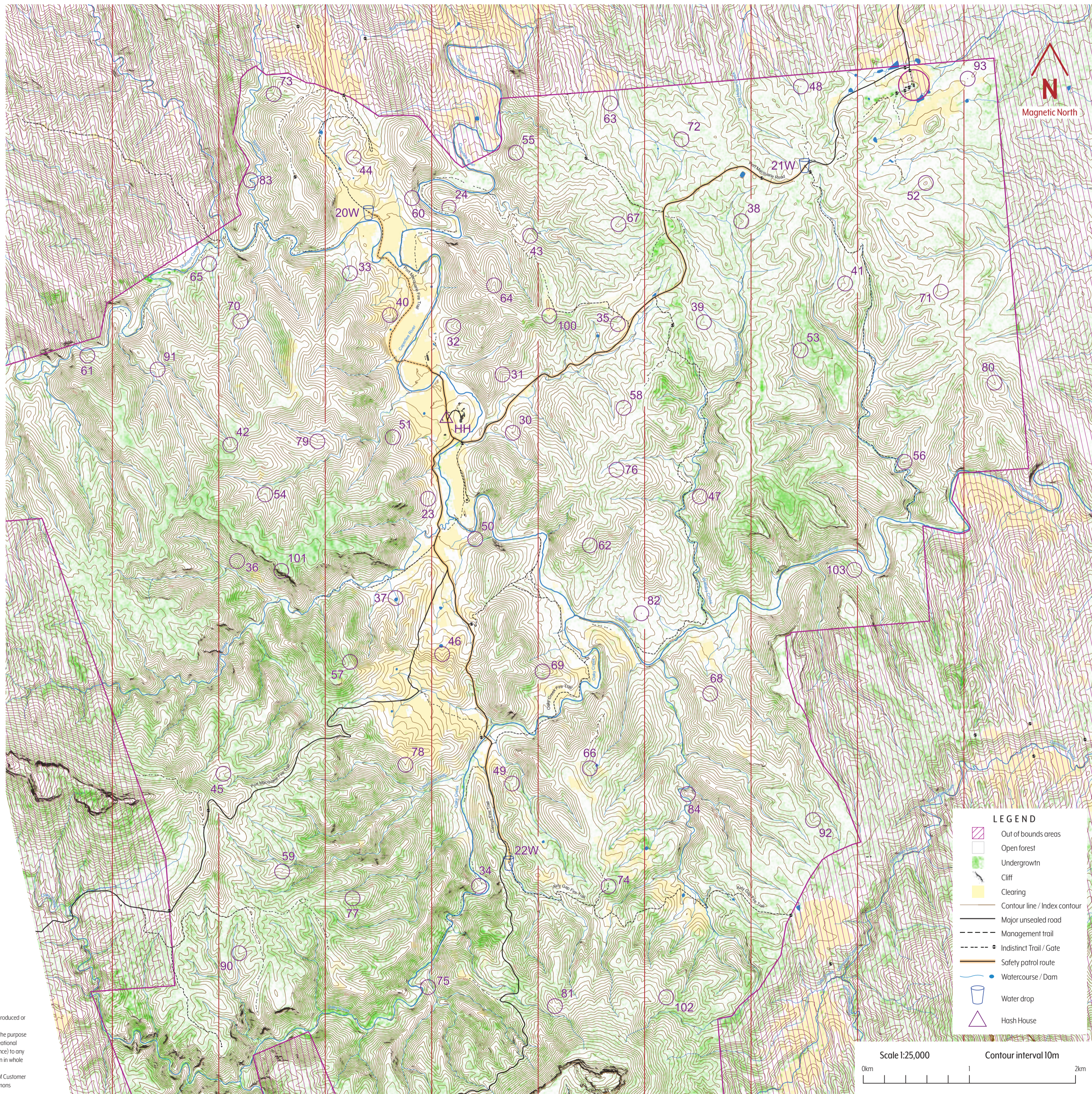
With the
support of



nationalparks.nsw.gov.au

Scouts
AUSTRALIA

THIS MATERIAL IS COPYRIGHT © NSW Rogaining Association (NSWRA). No part of this map may be reproduced or used for any other purpose without written permission.
DISCLAIMER: This map publication has been created by the NSW Rogaining Association (NSWRA) for the purpose of the event depicted in this map. The information in this map publication is intended for use as a recreational Rogaining event administered by the NSWRA. The NSWRA disclaims any liability (including for negligence) to any person in respect of anything and the consequences of anything, done, or not done by any such person in whole or partial reliance upon the whole or part of the information in this map publication.
Topographic Data: © Commonwealth of Australia (Geoscience Australia) 2021 & © NSW Department of Customer Services Spatial Information Exchange. All data is licensed under international system: "Creative Commons Attribution 4.0 International".



Control	Description
20	The track
21	The road/the track junction
22	The track bend 180°/20m
23	The gully
24	The gully
30	The spur
31	The gully
32	The spur
33	The watercourse/ the gully junction
34	The spur
35	The saddle 270°/15m
36	The spur between the gullies
37	The dam wall
38	The gully
39	The gully
40	The spur
41	The middle gully
42	The gully
43	The spur
44	The spur
45	The northern gully
46	The gully
47	The spur
48	The gully
49	A saddle
50	The knoll
51	The knoll
52	The knoll
53	The southern gully
54	The spur
55	The gully
56	The spur
57	The ridge
58	The SW gully
59	The gully
60	The saddle
61	The gully
62	The gully
63	The spur
64	The spur
65	A saddle
66	The gully
67	The spur
68	The spur
69	A knoll
70	The gully
71	The gully
72	The gully
73	A saddle
74	The knoll (Airly Lookout)
75	A saddle
76	The gully
77	A saddle
78	The spur
79	The W gully
80	The spur
81	The saddle
82	The gully
83	The watercourse bend
84	A knoll
90	The spur
91	The saddle
92	The gully
93	The saddle
100	Top of spur 310°/20m
101	Cliff top
102	A knoll
103	The gully
3760	

Scale 1:25,000 Contour interval 10m
0km 1 2km