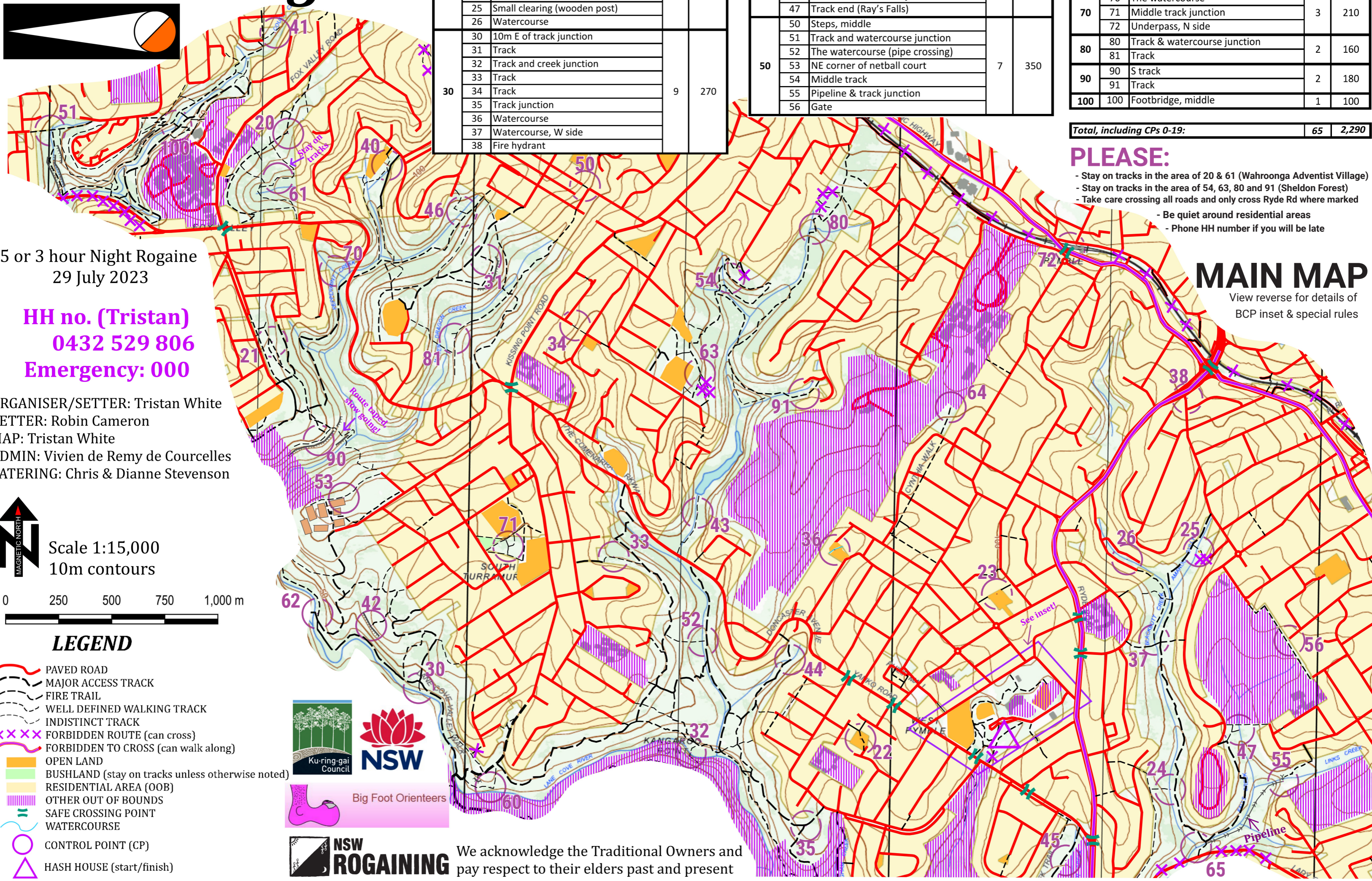


See the **North Shore** in a **New Light**



Score	CP No.	Description	Qty	Total points
20	20	Track bend	7	140
	21	E track		
	22	Picnic table		
	23	Amenities block, S side		
	24	Watercourse, E side (sewer vent)		
	25	Small clearing (wooden post)		
	26	Watercourse		
30	30	10m E of track junction	9	270
	31	Track		
	32	Track and creek junction		
	33	Track		
	34	Track		
	35	Track junction		
	36	Watercourse		
	37	Watercourse, W side		
	38	Fire hydrant		

40	40	Track and watercourse junction	8	320
	41	Track		
	42	Track end		
	43	Track		
	44	Track and watercourse junction		
	45	Track, E side		
	46	Track & watercourse junction		
	47	Track end (Ray's Falls)		
50	50	Steps, middle	7	350
	51	Track and watercourse junction		
	52	The watercourse (pipe crossing)		
	53	NE corner of netball court		
	54	Middle track		
	55	Pipeline & track junction		
	56	Gate		

60	60	Track	6	360
	61	Track & gully junction		
	62	Track junction		
	63	The track junction		
	64	Track end		
	65	The watercourse junction		
70	70	The watercourse	3	210
	71	Middle track junction		
	72	Underpass, N side		
80	80	Track & watercourse junction	2	160
	81	Track		
90	90	S track	2	180
	91	Track		
100	100	Footbridge, middle	1	100

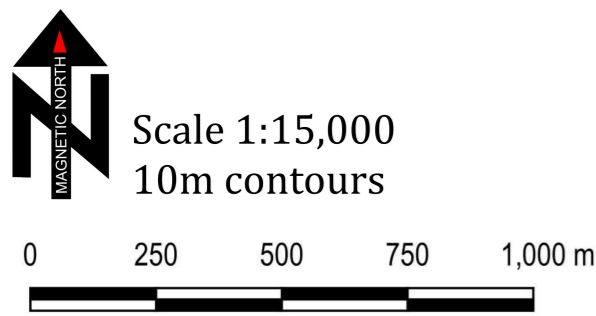
Total, including CPs 0-19: 65 2,290

- PLEASE:**
- Stay on tracks in the area of 20 & 61 (Wahroonga Adventist Village)
 - Stay on tracks in the area of 54, 63, 80 and 91 (Sheldon Forest)
 - Take care crossing all roads and only cross Ryde Rd where marked
 - Be quiet around residential areas
 - Phone HH number if you will be late

5 or 3 hour Night Rogaine
29 July 2023

HH no. (Tristan)
0432 529 806
Emergency: 000

ORGANISER/SETTER: Tristan White
VETTER: Robin Cameron
MAP: Tristan White
ADMIN: Vivien de Remy de Courcelles
CATERING: Chris & Dianne Stevenson



- LEGEND**
- PAVED ROAD
 - MAJOR ACCESS TRACK
 - FIRE TRAIL
 - WELL DEFINED WALKING TRACK
 - INDISTINCT TRACK
 - FORBIDDEN ROUTE (can cross)
 - FORBIDDEN TO CROSS (can walk along)
 - OPEN LAND
 - BUSHLAND (stay on tracks unless otherwise noted)
 - RESIDENTIAL AREA (OOB)
 - OTHER OUT OF BOUNDS
 - SAFE CROSSING POINT
 - WATERCOURSE
 - CONTROL POINT (CP)
 - HASH HOUSE (start/finish)



NSW ROGAINING We acknowledge the Traditional Owners and pay respect to their elders past and present

MAIN MAP
View reverse for details of BCP inset & special rules

Inset - Bicentennial Park

Controls 0-19 available from 18:30 onwards

Thanks to

Big Foot Orienteers



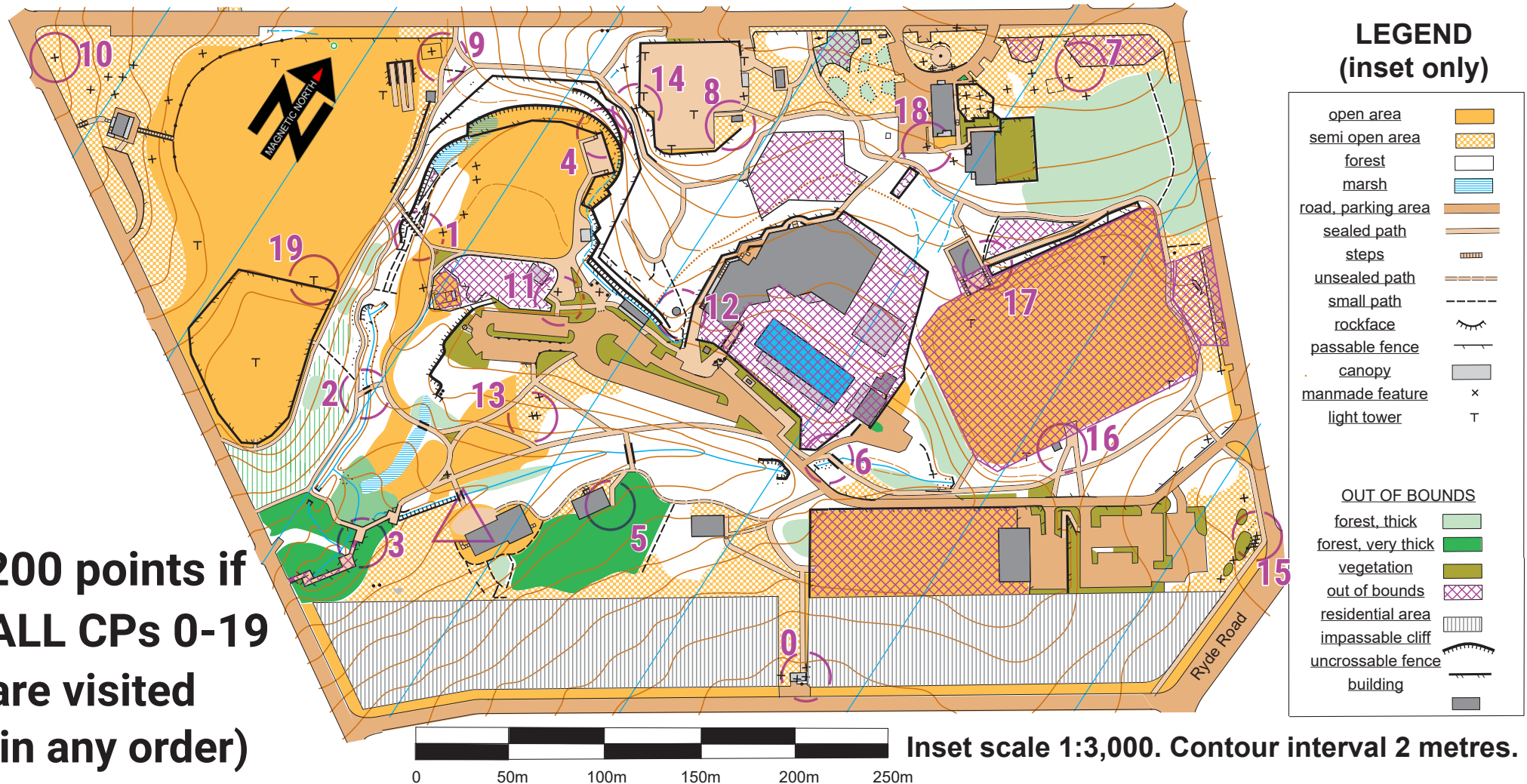
For the BCP map

No.	Description
0	Man made feature (seat)
1	SE end of bridge
2	SE end of bridge
3	SE corner of fence
4	N corner of stage

No.	Description
5	SE outside corner of building
6	SW end of bridge
7	SW corner of fence
8	SW outside corner of building (on tree adjacent)
9	E part of man made feature

No.	Description
10	Man made feature (sign)
11	Fence, NE corner
12	Man made feature (bin)
13	SE side of water tank
14	Man made feature (lamppost)

No.	Description
15	N flag pole
16	SE corner of building (on tree adjacent)
17	Railing, SW end
18	Man made feature (signpost)
19	Tower



200 points if ALL CPs 0-19 are visited (in any order)