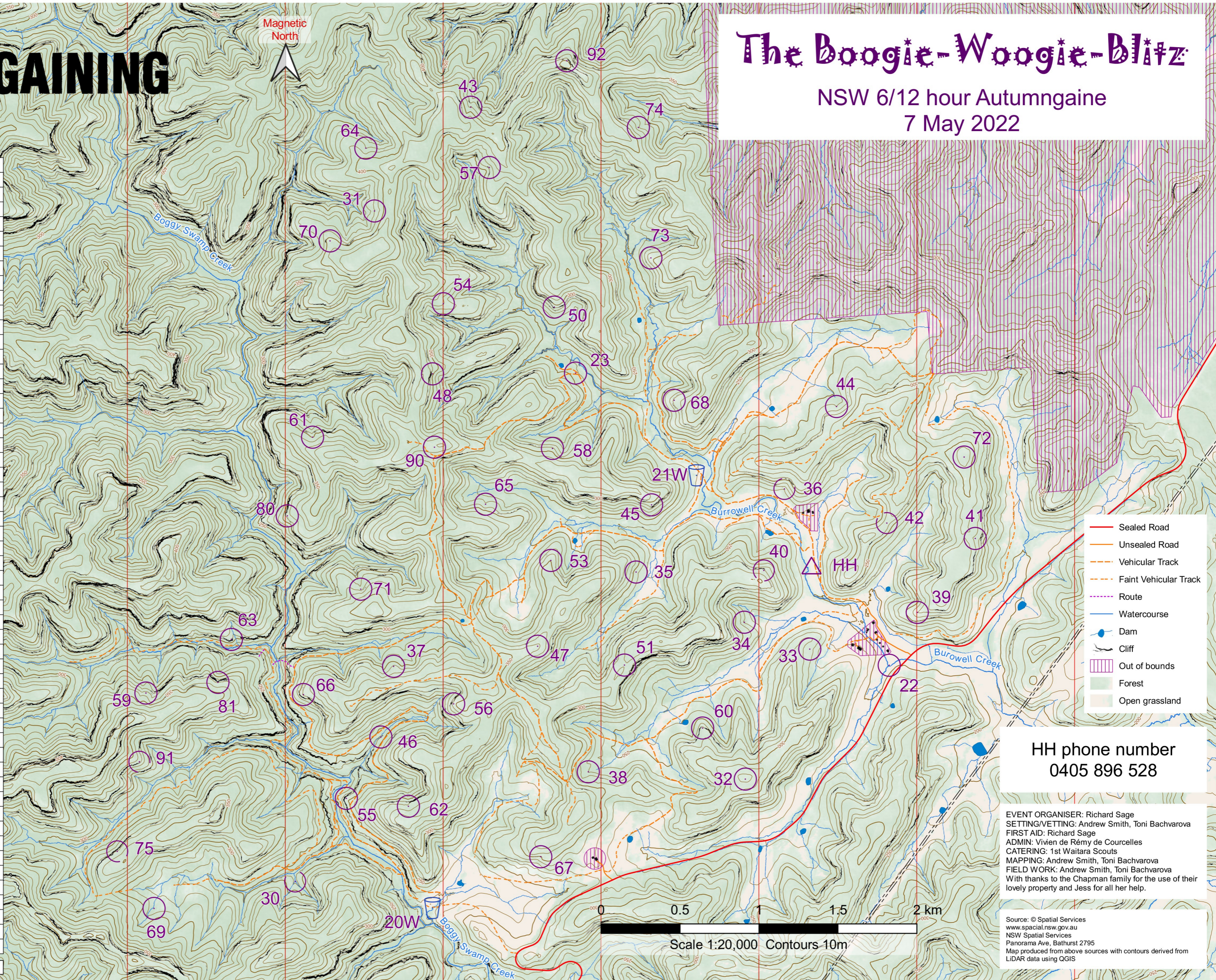


The Boogie-Woogie-Blitz

NSW 6/12 hour Autumngaine
7 May 2022

Control	Description
20W	The track watercourse junction
21W	The track junction (25m W)
22	The watercourse junction
23	The track junction
30	The watercourse junction
31	The gully
32	The knoll
33	The wide gully
34	The gully
35	The gully
36	The gully
37	The spur
38	The S gully
39	The spur
40	The spur (top of cliff)
41	The gully
42	The saddle
43	The spur
44	The S gully
45	The spur (top of cliff)
46	The watercourse
47	The spur
48	Base of cliff
50	The spur (above cliff)
51	The saddle
53	The spur
54	The spur
55	The spur (top of cliff)
56	The spur
57	The gully
58	The spur
59	The spur
60	The spur
61	The gully
62	The gully
63	The spur (top of cliff)
64	The gully
65	The gully
66	The spur
67	The gully
68	The spur
69	The watercourse (SE side)
70	The spur
71	The gully
72	The knoll
73	The spur
74	The gully
75	The shallow gully (top of cliff)
80	The spur
81	The gully (top of cliff)
90	Vehicle wreck (the Blitz!)
91	The spur
92	The spur (with views)

53 controls, total score = 2640



HH phone number
0405 896 528

EVENT ORGANISER: Richard Sage
 SETTING/VETTING: Andrew Smith, Toni Bachvarova
 FIRST AID: Richard Sage
 ADMIN: Vivien de Rémy de Courcelles
 CATERING: 1st Waitara Scouts
 MAPPING: Andrew Smith, Toni Bachvarova
 FIELD WORK: Andrew Smith, Toni Bachvarova
 With thanks to the Chapman family for the use of their lovely property and Jess for all her help.

Source: © Spatial Services
 www.spatial.nsw.gov.au
 NSW Spatial Services
 Panorama Ave, Bathurst 2795
 Map produced from above sources with contours derived from LIDAR data using QGIS