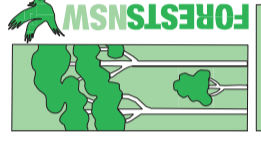
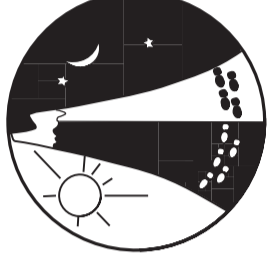


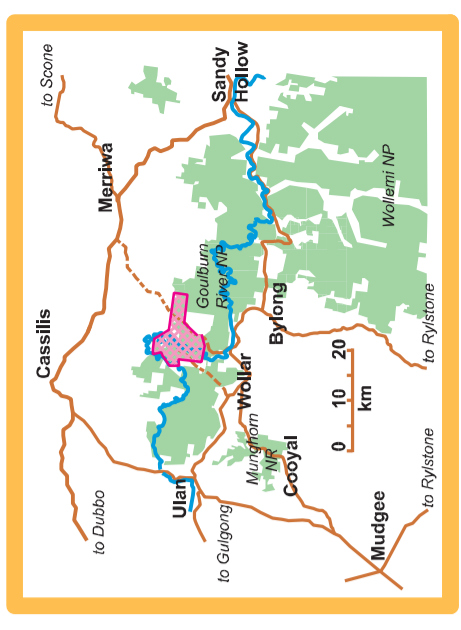
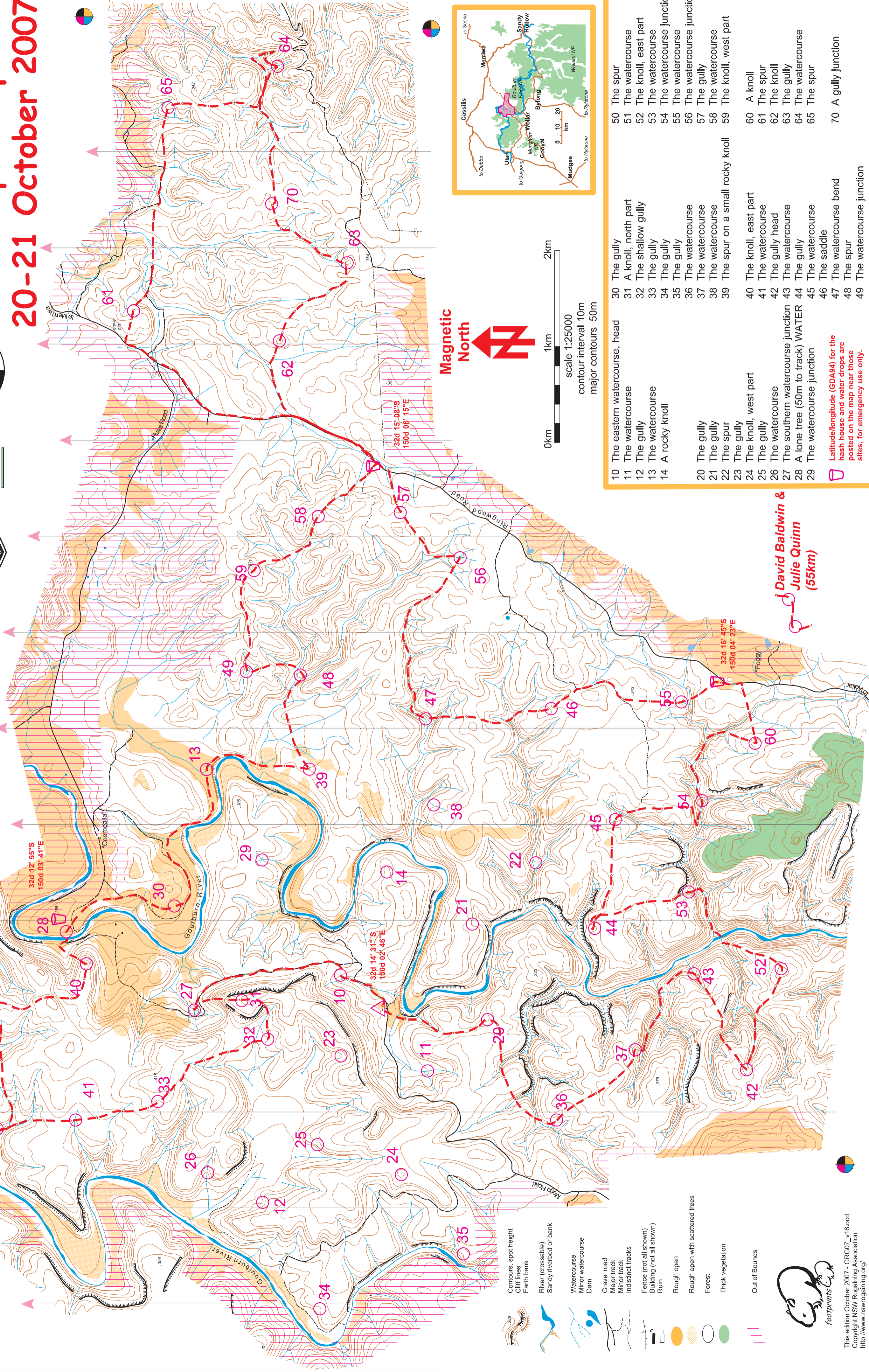
# Goulburn River Gallop NSW Rogaining Championships 20-21 October 2007



**Map Notes**  
The base map (contours and clifflines, drainage, roads and vegetation) has been compiled from the following sources:  
CMA 1:25000 topographic map series (Kiloe & Mt Misery), satellite imagery & medium to high resolution aerial photography.  
Unmapped cliffs and steep slopes may be present in the map area.

**Cartography:** Russell Rigby, using OCAD licence 1989 (Newcastle Orienteering Club)  
**Course setting:** Ian Dempsey, Bert van Neiten,  
Course vetting: Rob Vincent and Will de Sain.

**Landowners:** NSW National Parks & Wildlife Service  
Richard & Maureen Harding  
NSW State Forests



- |    |                                   |    |                                 |    |                          |
|----|-----------------------------------|----|---------------------------------|----|--------------------------|
| 10 | The eastern watercourse, head     | 30 | The gully                       | 50 | The spur                 |
| 11 | The watercourse                   | 31 | A knoll, north part             | 51 | The watercourse          |
| 12 | The gully                         | 32 | The shallow gully               | 52 | The knoll, east part     |
| 13 | The watercourse                   | 33 | The gully                       | 53 | The watercourse junction |
| 14 | A rocky knoll                     | 34 | The gully                       | 54 | The watercourse          |
|    |                                   | 35 | The gully                       | 55 | The watercourse          |
| 20 | The gully                         | 36 | The watercourse                 | 56 | The watercourse junction |
| 21 | The gully                         | 37 | The watercourse                 | 57 | The gully                |
| 22 | The spur                          | 38 | The watercourse                 | 58 | The watercourse          |
| 23 | The gully                         | 39 | The spur on a small rocky knoll | 59 | The knoll, west part     |
| 24 | The knoll, west part              | 40 | The knoll, east part            | 60 | A knoll                  |
| 25 | The gully                         | 41 | The watercourse                 | 61 | The spur                 |
| 26 | The watercourse                   | 42 | The knoll head                  | 62 | The knoll                |
| 27 | The southern watercourse junction | 43 | The watercourse                 | 63 | The gully                |
| 28 | A lone tree (50m to track) WATER  | 44 | The gully                       | 64 | The watercourse          |
| 29 | The watercourse junction          | 45 | The watercourse                 | 65 | The spur                 |
|    |                                   | 46 | The saddle                      | 70 | A gully junction         |
|    |                                   | 47 | The watercourse bend            |    |                          |
|    |                                   | 48 | The spur                        |    |                          |
|    |                                   | 49 | The watercourse junction        |    |                          |

**David Baldwin &  
Julie Quinn  
(55km)**

Latitude/longitude (GDA84) for the hash house and water drops are posted on the map near those sites, for emergency use only.

**Contours, spot height**  
Cliff lines  
Earth bank

**River (crossable)**  
Sandy riverbed or bank

**Watercourse**  
Minor watercourse  
Dam

**Gravel road**  
Major track  
Minor track  
Indistinct tracks

**Fence (not all shown)**  
Building (not all shown)  
Ruin

**Rough open**  
Rough open with scattered trees

**Forest**  
Thick vegetation

**Out of Bounds**

This edition October 2007 - GRG07\_v16.occ  
Copyright NSW Rogaining Association  
<http://www.nswrogaining.org>