

Event Co-ordinator: Trevor Gollan  
 Course Setters: Chris Stevenson  
 John Clancy  
 Course Vettors: Julian Ledger  
 Anne Newman  
 Trevor Gollan  
 Ian Almond  
 Administration:  
 Catering: 1st Waitara Scouts



Organised by:  
 NSW Rogaining Association



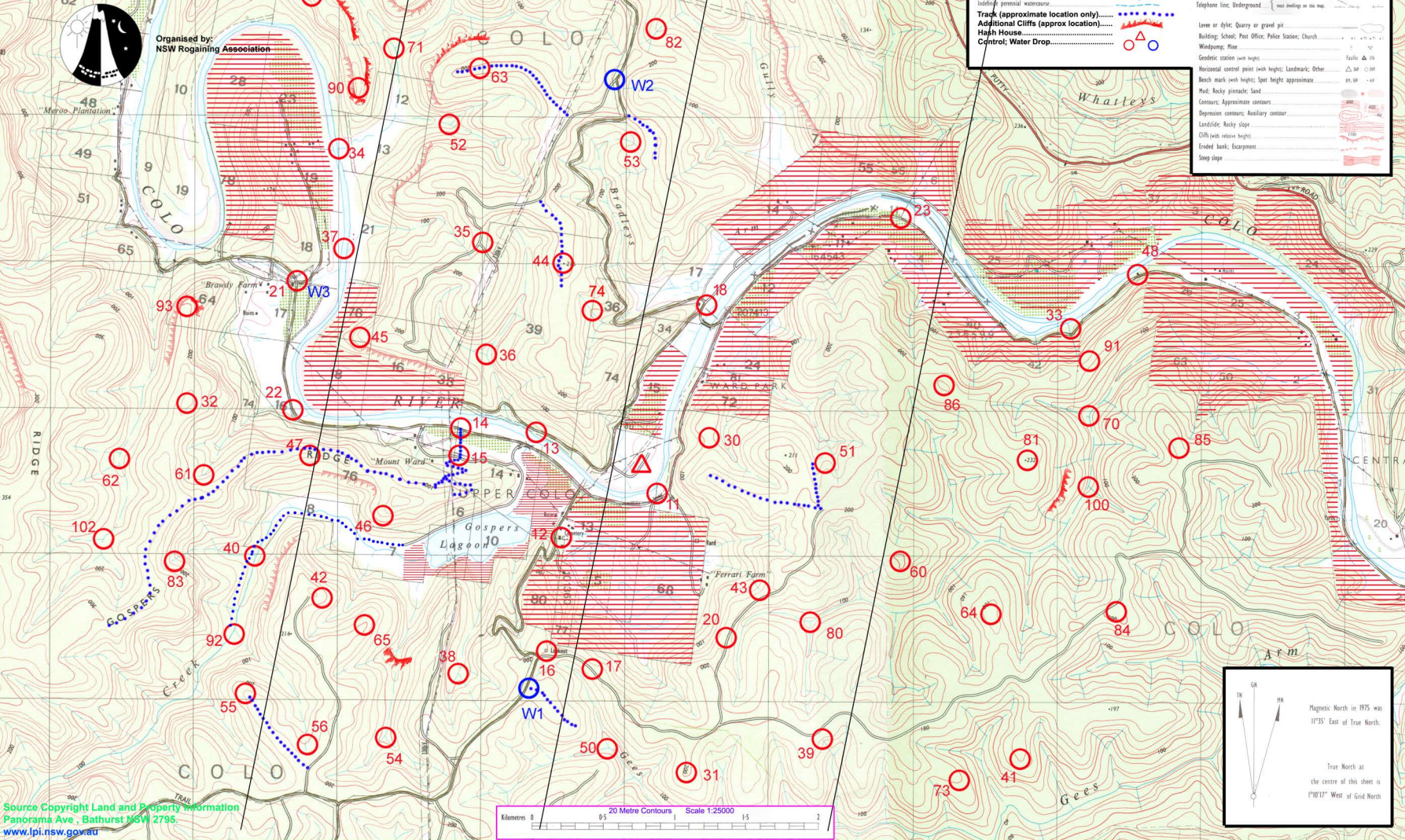
# WELCOME TO THE 41ST

*Paddy's Plover* **ROGAINE**  
 20th June 2004

Dense timber; Medium timber Scattered timber; Forest, coniferous or pine. Orchard or plantation, Vineyard. Mangrove, Scrub. Marsh or swamp; Land subject to inundation. Small dam, waterhole or pool; Well or bore; Spring. Intermittent watercourse with falls. Dam or weir; Rapids in large river. Indefinite intermittent watercourse. Perennial watercourse with rapids. Intermittent lake; Dry lake. Irrigated canal and drains. Indefinite perennial watercourse.		Built-up area with main roads. Road sealed surface two or more lanes. Road sealed surface one lane. Road loose surface two or more lanes. Road loose surface one lane; Embankment; Cutting. Track vehicular; Gate; Integrated foot track. River, waterway; Natural lake; Powerway. Bridge; Causeway; Kilometer post. Railway multiple track; Tunnel. Railway single track; Siding or loop. Light railway or tramway. Power transmission line. Telephone line; Underground.	
---	--	--	--

Level or dyke; Quarry or gravel pit.  
 Building; School; Post Office; Police Station; Church.  
 Windpump; Mine.  
 Geodetic station (with height).  
 Horizontal control point (with height); Landmark; Other.  
 Bench mark (with height); Spot height approximate.  
 Peak; Rocky pinnacle; Land.  
 Contour; Approximate contour.  
 Depression contour; Auxiliary contour.  
 Landfill; Rocky slope.  
 Cliff (with relative height).  
 Eroded bank; Escarpment.  
 Steep slope.

These services are connected to  
 most dwellings on this map.



Source Copyright Land and Property Information  
 Panorama Ave., Bathurst NSW 2795.  
[www.lpi.nsw.gov.au](http://www.lpi.nsw.gov.au)

