

# NSW ROGAINING NEWSLETTER

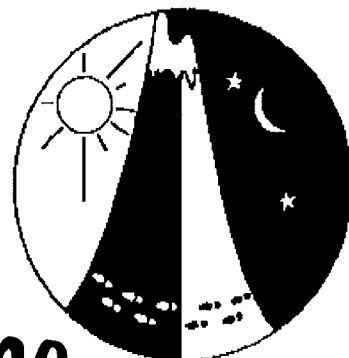
Issue 80

[www.speakandbyte.com.au/rogaine](http://www.speakandbyte.com.au/rogaine)

June 2000



## Paddy Pallin Sunday 18th June



### The 37th Paddy Pallin

Six hours on Sunday 18 June will be another ripper. Located in spectacular terrain near Carperdee on the western edge of the Blue Mountains, the Hash House can be reached in two and a half to three hours from Sydney. Participants can arrive the day before and camp in the large grassy clearing in a great setting or travel up early on the day. Please bring your own water supplies. A sausage sizzle will be provided at the end of the event and a meal on Saturday evening is also available for campers (see entry form).

As usual, the course will cater

for all comers from beginners and families to the sleekest competitors, with a variety of terrain to suit all tastes. Magnificent views, beautiful creek-lines, colourful cliffs and dramatic rock formations are features of the course, but no technical skills are required. Well tracked areas with easy navigation are mixed with mostly open bushland, some challenging ridge and gully navigation and a variable range of elevation depending on your mood!

Being the middle of winter, the higher parts of the course could be quite cold and windy, so participants should be prepared for a

range of weather conditions. Come along for a great weekend in a great part of the world!

Oh, did we mention the random prize draw at the end of the event? This years prizes come from Ultimate and Gore Wind Stopper, via our friends at Paddy Pallin.

Ian Brown  
Course Setter

### CONTENTS

What's On In 2000 Calendar .....2

Membership Form .....6

NSW Champs 15/16 April

Tough going on the East side.....3

Six Brothers A Rewarding First 4 & 5

#### Entry Forms:

Paddy Pallin  
Australian Championship  
Search and Rescue

# WHAT'S ON IN 2000

Event/Coordinator	Course Setters (4) Vettors (2)	Administration	Hash House
<b>EVENT CALENDAR – NSW &amp; ACT</b>			
<b>18th June</b> 6 hr Paddy Pallin Capertee	Ian Brown (02 4787 1420) Tony Garbellini Geoff Luscombe	Stephen Castle Rhonda Monahan	1st Waitara Scouts
<b>1-2nd July</b> 29hr Serach & Rescue Nav Shield 2000	John Tonitto (02 9789 2527 work)	—	—
<b>15-16th July</b> 24hr Australian Championships Upper Hunter	Graeme Cooper (02 6772 3584) Peter Waterson	Richard Sage Alan Mansfield Julian Ledger	Vicki Cooper and friends (lots to mention)
<b>10th September</b> ACT Cyclegaine	Geoff Mercer (02 6295 6019)	—	—
<b>7th October</b> Lake Macquarie	Robert Vincent (02 4956 7018) Wil de Sain, Shane Hansen	Geoff & Margaret Peel	Nick Dent Hillary Wood
<b>11 November</b> 6/12hr event – ACT	Geoff Mercer (02 6295 6019)	—	—
<b>25-26th November</b> 6/12hr Socialgaine	Daniel Marlay (02 9969 9167)	TBA	TBA

*Join in the fun of working behind the scenes*

*HELP always needed, contact:*

**Vicki Cooper**

**Phone: (02) 6772-3584 (h)**

**Cluny Rd, Armidale NSW 2350**

**No experience is necessary - detailed instructions are supplied.**

TOUGH GOING ON THE EAST SIDE - 2000 NSW CHAMPS

As the unlikely men's vet 12/24 winners Phil Allen and I were full of expectation for a gentle rogaining experience on a warm autumn weekend. I was a late entrant following good progress after knee arthroscopic surgery two weeks before the event. Phil was, as they say in running circles, "coming back" to full fitness.

With our fellow Rogainers John and Bob we had half a case of Cascade Light and some excellent white wine in the truck fridge to accompany the excellent meal by the campfire.

While I'm a cautious and progressive route planner, Phil likes to get the highlighter dots on the map at the start. A ten metre man' from way back, the 20 metre contours on the east side hid a few surprises!

Our initial route selection started to unravel as we journeyed east to 86. The gullies between each of the planned circuit controls [33, 65, 76 54 ....] were going to be tougher than either of us expected. Back to 45 and down the 'cliff' to 87 on the Gooraba Creek tributary - yes we followed the  $\longleftrightarrow$  arrows with another 'competent' mixed team. Great bell birds but the thorn vines scratches are still healing three weeks on. Revised plan - "let's climb and then contour west try for the 53 then 52 - the power lines will give a clear fix - it's only 3.15". Plunging back into the valleys twice lost it's appeal when we appreciated just how far down we had to go and vine tangled the creek that would greet us. Despondent from our route choice but enjoying the afternoon sun we tracked along an unmarked road north back toward the HH. "52 will be easy!"

At 5 we set off down to 52, easy compared to other creeks encountered, but gloomy in the last light. It was dark by the time we reached the HH. Four controls and 250 points was a pretty miserable score by our

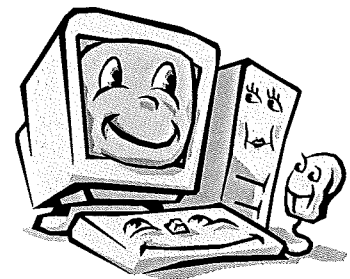
estimation. We had already enjoyed some cold ale and a great meal when John and Bob returned after 7.30 with fewer points and the usual explanations!

Not daunted, we had a few more beers, secured some excellent 'insider' advice and a had good sleep under the energising hiss of 33,000 volts. Go west 'old fellows' was the advice, so west and along the ridges was the plan. Not to be outdone, our colleagues were away by 6.00am. Phil is NOT a morning person, however hot tea and breakfast in bed was more than he gets in other places! The dots were on 31, 43, 30, 72 34 and 73 if we have time. We traveled well along the ridge on the bacon and egg toasted sandwiches and tea. Views, open ridges and a lifting cool mist before a hoped for sunny morning. This is Rogaining. A light shower dampened our climb up to 72. The apples from breakfast were our snack. Moving out we met two very excited family groups making the control. We set off east toward Tari Creek and 34. A little too far east me thinks as we negotiated a tight cliff line. The creek that flowed from the basin surrounded by controls 43, 30 and 72 was magnificent - open and full of birds. Worth the skinned elbow route down. The family groups had traveled a much easier route north from 72 and caught up to us at 34. With an hour to go - 73 was a must! XXXXXX had a different meaning in the west! Undeterred we trekked NW up Tari Creek, "there would be a break in the sword grass somewhere! The human torpedo approach through the three meter sword grass toward a white gum on the eastern side was my strategy. Phil with substantially more mass was inclined to 'follow' and enjoy the human tunnel! 73 was as expected and home along the ridge with 12 minutes to spare! A great lunch in the sun, an excellent presentation ceremony - we enjoyed the

many goodies from Mountain Designs and a surprised certificate for our lowly 530 points. The women's 12/24 vets are to be complemented as they did much better with over 700.

Our compliments to the setters, vetters, admin and the 'grub' teams. Not the most scenic course we've done [*we set the '99 Paddy Pallin*] but a great weekend out and about. The adage to young men [and more lately women] to 'go west' equally applied in this rogaine to the old 'grey fellas'!

Ted Booth  
Wollongong



Join us on the web at:  
[www.speakandbyte.com.au/rogaine](http://www.speakandbyte.com.au/rogaine)

## Six Brothers' - A rewarding first

In an exhausted yet elated state post-event early last year, someone made the

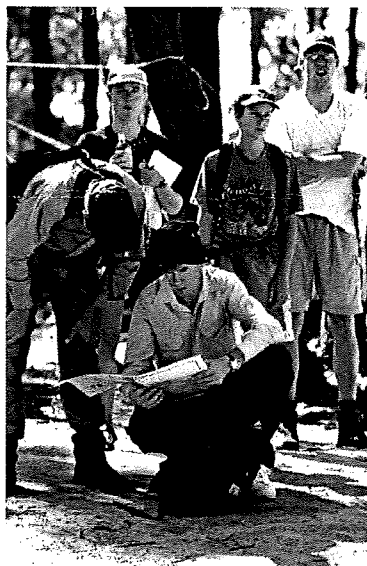


suggestion that we should do our own event. After years of enjoying the labour of others we all agreed it was our turn to contribute to the sport we all enjoyed.

Our first step was to contact the association to express our interest. From the pre-arranged calendar some suggestions were given. With a large team of enthusiast friends to work with, we offered to take on the 2000 Championship event. A daunting yet exciting responsibility. A number of resources were provided by the committee to help us plan our event. Over the course of our first 'take-away and beer' meeting we drew up a schedule charting the next 6 months. While many past events had been run by a partnership of two to three keen organisers we formed a core group of six, each with particular responsibilities. Our group now began the work in each of their chosen roles, with myself as event co-ordinator acting as the 'glue'. A site was chosen after a number of exploratory drives and walks in the area. Permissions were granted (eventually!) from the National Parks and Wildlife Service, and Andrew Pope began his work as course-setter. He gathered a willing team to assist in the initial reconnaissance and the many weeks of setting and checking. Escaping the city we headed for the bush on the weekends. In teams we ventured out for the day returning on dark to gather at our regular campsite for dinner and a well-earned sleep – then out again the next day. On the weekends when the temperatures rose above 35 degrees more wallowing in the creeks took place than course work! And if it wasn't sweltering, it was pouring with rain.

Yet through it all we enjoyed the chance to discover an area not often walked. It was also a chance to sharpen our navigational skills and fitness levels for future events.

The hash-house site was arranged through a contact given to us by the NPWS. Owned by the Sydney Off Road Racing Association it was ideally situated centrally within our event course, and it met all our spatial requirements for camping, parking and the general gathering. On a number of weekends while we were course setting race meetings were being held. Purpose



built 'buggies' akin to something out of Mad Max were hurtling along the dirt tracks at "full-noise". One of the perks to organising this rogaïne was the chance to ride in one of the buggies. Suffice to say I survived, although I did have sore neck muscles for most of the following week. We were assured that the race facility would not be in use for our event week-

end! With the event weekend drawing close all our months of discussions and preparations finally started to come together. The course was completed over the two weekends prior to the event with Alan Mansfield and Sonia Kupina working right up to the wire vetting the large course. The team gathered one more time to hang the controls the weekend before the event. Our administration team of Belinda Pope and Jenny Wood assembled the information packs for mail-out after weeks of entering the entries into the NSWRA database. Registration systems were developed for use at the event and a close eye remained on the budget. Our catering team of Stephanie Seaton and Stuart Robertson who had over the months planned an excellent menu, gathered the many ingredients and necessary equipment. Finally after a number of late nights in the last week preparing the map and notes; picking up tents and other 'bought, borrowed and stolen' equipment; and finalising all the new event signage, we were ready. Well as ready as we were ever going to be!

We all took the Friday off work to set-up the hash-house site. In a convoy of cars and trailers all the food and equipment was delivered. By Friday night the site was ready for the competitors to begin arriving. Saturday morning our team of volunteers grew, and over the entire weekend fluctuated as friends and family assisted with whatever time they could. With the event in close proximity to Sydney the majority of competitors arrived early Saturday morning. After months of work preparing for this day it was very satisfying for all of us to feel the buzz of anticipation of so many participants. That buzz we usually felt as



(Continued on page 5)

## NSW Champs – Colo 15 & 16 April 2000

### Six Brothers' - A rewarding first (continued)

(Continued from page 4)

competitors, only this time the table was turned. Personally the only disappointment of the weekend was that I couldn't join the excited throng as they grabbed their control cards and dis-



persed onto the course.

With all the competitors enjoying (?) the course we could finally sit back and relax – well at least until the next meal needed to be prepared; or water drops



replenished; or safety patrols made; or another admin. task needed attention!

By 12 noon Sunday as the hooter sounded the conclusion of the rogain event all our preparations had run smoothly. Our only hiccup was during the presentations, but thankfully all the competitors were so exhausted they did not seem too concerned. Over the celebra-

tory lunch many participants thanked us for our efforts and congratulated us on a successful event. One such person in her mid to late sixties thanked me personally for making her first rogain so enjoyable. That in itself rewarding

enough for all the team's effort. Even without those kind words we all enjoyed setting our first rogain event. Thanks to all the participants that made it a success and particularly all those volunteers who helped throughout the entire process. We'll see you again in 2002!

*Andy Mein.*

### 2000 COMMITTEE

**President:** Sue Clarke  
02-9816-2508  
sclarke@efs.mq.edu.au

**Vice President:** Richard Sage  
02-9564-2126  
pkarch@marrickville.nsw.gov.au

**Secretary/Public Officer:** Julian Ledger  
02-9416-6423  
julian@yhansw.org.au

**Treasurer:** Tony Maloney  
02-9978-9181 (w)  
Anthony\_Maloney@royalsun.com.au

**Editors:**  
Rhonda Monahan & Stephen Castle  
PO Box 401,  
Alexandria NSW 1435  
02-9557-7101  
stephen@speakandbyte.com.au  
rhonda@speakandbyte.com.au

**Event Manager:** Mike Hotchkis  
02-4294-1363  
mah@atom.ansto.gov.au

**Membership:** Ken Smith  
PO Box 584  
Chatswood NSW 2057  
02-9808-4021  
smik@idx.com.au

**Publicity:** Andy Mein  
02-9416-4404 (w)  
andy\_mein@bigpond.com

**Equipment:** Graeme Cooper  
02-6772-3584  
gcooper@metz.une.edu.au

**Committee:**  
Nihal Danis  
Alan Mansfield  
Daniel Marlay

**ARA Representative:** Mike Hotchkis  
02-4294-1363  
mah@atom.ansto.gov.au

**Volunteer Co-ordinator:** Vicki Cooper  
02-6772-3584  
gcooper@metz.une.edu.au

# DON'T GET OFF THE BEATEN TRACK

## Services

**Surveying:** Control surveys for natural resource and construction projects, Global Positioning System surveys and services. Project management, geodetic and mapping control surveys as well as survey control information.

**Graphics:** Design, planning, layout and proofing, electronic publishing (MacIntosh and IBM), image scanning, camera contacts, dyelines, printing, bookbinding, planmounting and framing services are all provided for in-house and contract work.

**Scanning and Digitising:** collection of digital information from source data. Production of working copies from original documents. Data conversion and reformatting.

**Aerial Photography:** State-wide Photographic coverage, photomosaics and special purpose aerial photography and digital imagery.

**Thematic Mapping:** Thematic maps for any purpose using the Centre's base mapping or Client-supplied base.

**Image Processing:** Digital image processing analysis, Landsat sales.

**Information Systems:** Advisory services in information management and systems development



## Products

- Digital cadastral information for NSW
- Digitally derived cadastral map products
- Digital topographic data
- Aerial photography coverage of NSW
- Satellite imagery of NSW
- Topographic maps covering NSW
- Parish and county maps covering NSW
- Orthophoto maps
- Property maps
- Touring maps
- Tourist maps
- Historic map reproductions
- Geographic names gazetteer
- Special publication including: Official Road Directory of NSW  
Map Reading Guide  
Atlas of NSW
- Special use maps including: NSW base maps  
Aboriginal map of NSW  
Lord Howe Island Colour Photomap  
NSW Local Government Areas map  
Sydney CBD colour photomap
- Digital boundaries such as local government, suburb, electoral etc.

## CONTACT



Surveyor-General's Department  
New South Wales

to SURVEYOR-GENERALS DEPARTMENT, Panorama Ave., Bathurst 2795  
Phone (02) 63 328 200

Please send me  1997 NSW State of the Environment Report

Send to: Name: .....  
Address: .....  
P/Code: .....  
Phone No: .....

## Application for Membership or Renewal of Membership

I/We the undersigned, who live at the address given below, hereby apply to become members / renew membership of the above named incorporated association. In the event of my/our admission as members I/we agree to be bound by the rules of the association for the time being in force.

Full Name	Date of Birth	Fee (\$)	Renew (Y/N)	Signature

My/Our address (for delivery of one copy of each newsletter) is:

Name: .....

Address: .....

Town: ..... Postcode: .....

E-mail: .....

Phone: (home)..... (work)..... (fax).....

The fee per annum is \$12 for the first person on this form and \$3 for each additional person. The maximum fee for a family is \$15. The membership year starts on 1st January. A family is defined as one or two adults plus any number of dependant children each of who looks to one or both of the adults as a parent and who all live at the same address.

Please send this form together with a cheque payable to "NSW Rogaining Association" to:  
Membership Secretary NSWRA, PO Box 584, Chatswood NSW 2057



## **CAN YOU TOW THE TRAILER?**

We desperately need someone to tow the trailer  
From: The Paddy Pallin Rogaine (Capertee)  
To: The Australian Champs (Scone)

You will need a BEEFY car/truck  
Since the trailer is heavy.

### **CAN YOU HELP US?**

Call Julian Ledger on (02) 9416 6423

## **Lake Macquarie Masters Games**

### **Over 40?**

This years Lake Macquarie Rogaine will be one of the 25 events being sponsored by the Lake Macquarie City Council as part of the Lake Macquarie Master Games.

Some of the Masters events being held the same weekend are:

- ◆ Orienteering
- ◆ Mountain Bikes
- ◆ Cycling
- ◆ Rowing
- ◆ Golf

For those who register their will be recognition certificates, prizes and medals on offer.

To be part of these Master Games you MUST send an 'Expression of Interest' Form to Lake Macquarie council.

**To obtain this form call:**  
Recreation Programs Dept.  
Lake Macquarie City Council  
(02) 49 210 434

## **THROW AWAY YOUR CHEQUE BOOK!**

Have you found that the only reason you keep your cheque book is to enter a rogaine ?

Well now you can discard it!

As a trial, you can now enter the Paddy Pallin Rogaine ON-LINE, paying via your Visa or MasterCard (this is a secure transaction).

Visit the Rogaine Website at [www.speakandbyte.com.au/rogaine](http://www.speakandbyte.com.au/rogaine)  
Click on the Paddy Pallin button and then click the 'enter on-line' link.

## Saturday 1 July 2000 - Sunday 2 July 2000

NAVIGATION SHIELD 2000

*29.0 Hr* Starts at 8.45am in Saturday and concludes at 2pm on Sunday

*10.5 Hr* Starts at 8:45am on Saturday and concludes at 7:30pm

Although this event is the Emergency Services Navigation Shield, organised by the Wilderness Rescue group (a specialist VRA squad that is run by the Confederation of Bushwalking Clubs of NSW), members of Rogaining Associations are invited to enter in the Rogaining class which will be conducted in accordance with the Australian Rogaining Association rules. A limit on the number of entrants in the class might be imposed.

*Note!*

**No Pre-marked maps**  
Standard unmarked maps (1:25,000/10m) will be supplied at registration along with clue sheets listing checkpoint descriptions and grid references  
Only two maps supplied per team, additional maps are available @ \$5ea

**No hash house**  
Catered meals must be pre-ordered

**No numbers on control flags**  
Some control flags are blue/yellow

**Moon**  
The moon will be a new moon

**Terrain**  
State Forest, largely scrub free(!), and some National Park – West of Sydney.

*Pricing:* Fees: • 10.5hr Event: \$20/person • 29hr Event: \$25/person  
Meals: • Saturday Dinner: \$10 • Sunday Breakfast: \$4 • Sunday Lunch: \$6

*Cancellations:* Full refund if you cancel before the closing date, 50% refund if you cancel after the closing date but before the event, no refund if you cancel on the day of the event.

*Closing Date:* Entries must be post-marked no later then the 24th June.  
Late entries incur a penalty of \$25/team

*Questions:* John Tonitto  
Phone: (02) 9789-2527 (w) Fax: (02) 9718-7272  
Mobile: 0418-277-111

✂-----  
**Send:** • Completed entry • A cheque payable to "Wilderness Rescue" • A stamped, self-addressed, DL sized envelope (for final instructions) to: PO Box 22, Canterbury NSW 2193

Name (team contact first)	Address	Sex (M/F)	Age 1 Jul	Food D / B / L	T-Shirt / Cap	Entry \$	Total \$
				□ □ □	□ □		
				□ □ □	□ □		
				□ □ □	□ □		
				□ □ □	□ □		
				□ □ □	□ □		
Fees: • 10.5hr Event: \$20/person • 29hr Event: \$25/person Meals: • Saturday Dinner: \$10 • Sunday Breakfast: \$4 • Sunday Lunch: \$6 Memorabilia: • T-Shirts: \$19 (M   L   XL) • Caps: \$9.50						<b>TOTAL:</b>	