

The 1996 Upside **DOMU**
Rogaine 10 March

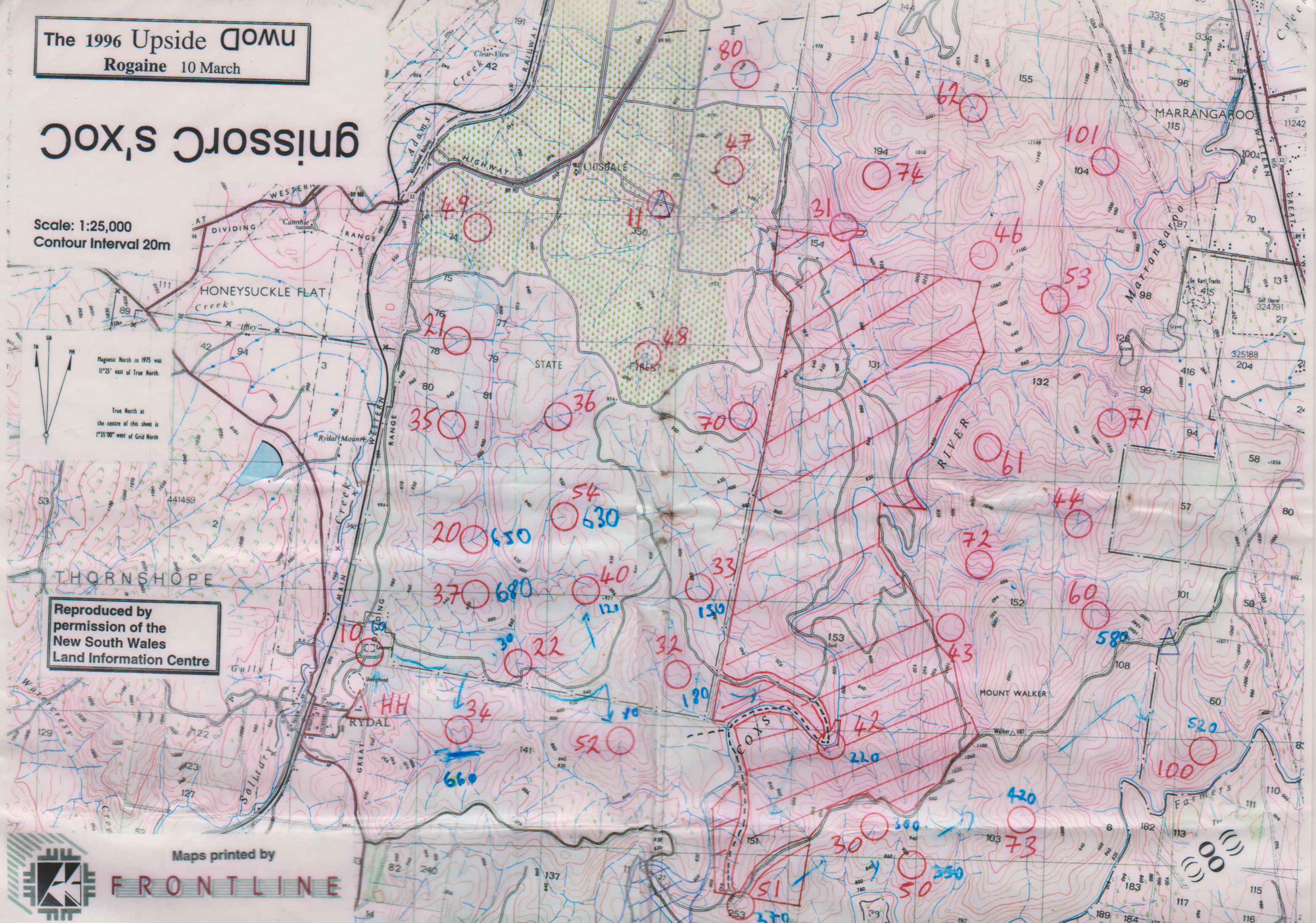
gnissorc s'xoc

Scale: 1:25,000
Contour Interval 20m



Magnetic North in 1975 was
11°25' east of True North.

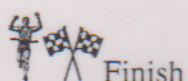
True North at
the centre of this sheet is
1°35'00" west of Grid North

Reproduced by
permission of the
New South Wales
Land Information Centre



Control Descriptions (Scale: 1:25,000 Contour Interval 20 metres)

#	Description	Points	
10	The cemetery, south gate	10	 Late Penalty 10 points per minute or part thereof
11	The ruin, west bedroom (water)	10	
20	The watercourse bend	20	
21	The gully junction	20	
22	The watercourse junction	20	
30	Head of the watercourse	30	
31	The spur	30	
32	The gully	30	
33	The watercourse junction	30	
34	The spur	30	
35	The watercourse junction	30	Any team not having reported to the Hash House within 30 minutes of the official finishing time will be assumed to have abandoned the course
36	The watercourse junction	30	
37	The saddle	30	
40	The spur <i>NW</i>	40	
42	The river bend, south east bank	40	
43	The gully	40	
44	The watercourse junction	40	
46	The gully	40	
47	A green tank, east bank of watercourse	40	
48	A dam, north side	40	 Water There are 2 water drops, at #10 and in the south east corner of the map between #101 and #60. Each of these is marked by a blue triangle Δ
49	The spur	40	
50	The spur	50	
51	The knoll	50	
52	The head of the watercourse	50	
53	The watercourse	50	
54	The head of the watercourse	50	
60	The spur	60	
61	The spur	60	
62	The gully junction	60	
70	The spur	70	Total Points score: 1700 Number of controls: 37
71	The head of the watercourse	70	
72	The gully	70	
73	A saddle	70	
74	A knoll	70	
80	The watercourse junction	80	
100	The gully, on a dead tree	100	
101	The watercourse junction	100	



Finish

High Noon ☉ on Sunday 10 March

Moon ☾

rises 9.36 pm Saturday, sets 10.14 am Sunday (Full moon Tuesday 5th)

Sun ☀

rises 6.50 am Sunday